

# Human BAG1 Knockdown Cell Line (WB-Validated)



**Catalog #: C61340**

## Aliases

BAG1; BAG Cochaperone 1; BAG Family Molecular Chaperone Regulator 1; BCL2 Associated Athanogene 1; BAG-1; HAP; Glucocortoid Receptor-Associated Protein RAP46; Bcl-2 Associating Athanogene-1 Protein; Receptor-Associated Protein, 46-K; Bcl-2-Associated Athanogene 1; BCL2 Associated Athanogene; BCL2-Associated Athanogene; Bcl-2-Binding Protein; RAP46

## Background

Gene Name: BAG1  
NCBI Gene Entry: [573](#)

## Storage

Store at liquid nitrogen for 1 year.

## Kit Components

1. Human BAG1 Knockdown Cell Line (Wb-Validated)
2. Wild-type cell line

## Parental Cell Line

Human cell line supplied by the client

## Validation Methods

RT-qPCR, Western blotting (WB)

## Shipping

Shipped on Dry Ice.

## Instructions For Use

This knockdown cell line should be paired with wild-type cell line for use.

**Note:** This product is for research use only.

## Validation Data

---

### SUPPORT

SUPPORT@GENUINBIOTECH.COM  
TEL: +1-540-855-7041

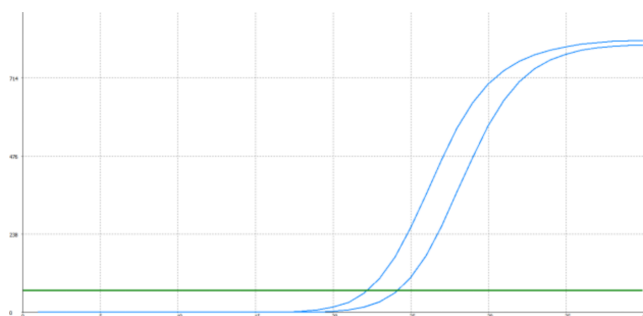
### ORDERS

SALES@GENUINBIOTECH.COM  
FAX: +1-540-855-7041

[WWW.GENUINBIOTECH.COM](http://WWW.GENUINBIOTECH.COM)

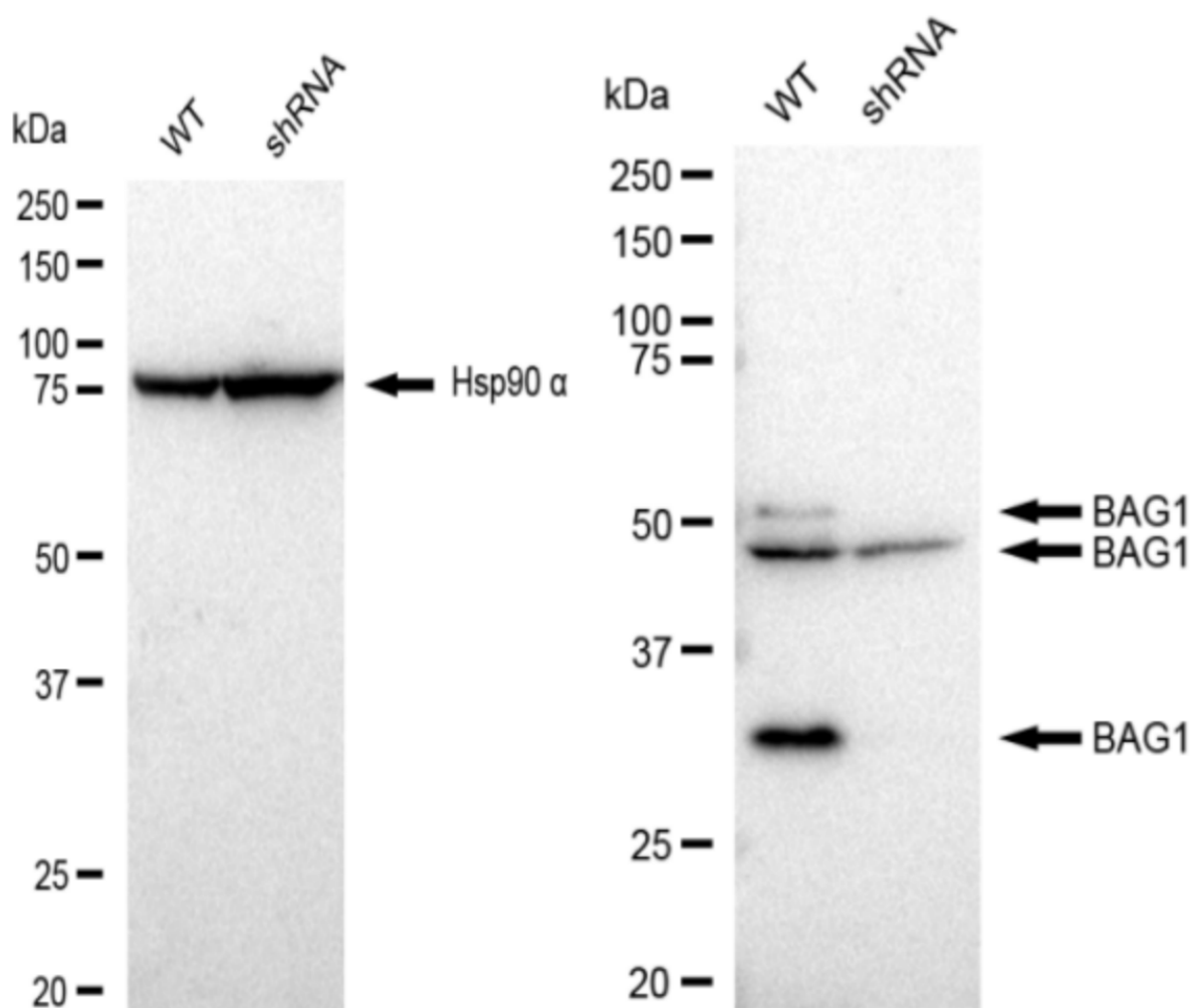
## Human BAG1 Knockdown Cell Line (WB-Validated)

PAGE 2



Genotype	Ct Value
Wild-Type	22.02
Knock-Down	23.93
$\Delta Ct (Ct_{KD} - Ct_{WT})$	1.91
% mRNA Reduction	↓ 73%

RT-qPCR analysis. HeLa cells were infected with BAG1-specific shRNA lentiviral particles, total RNA was extracted from wild-type and knockdown cells, RT-qPCR was performed using gene-specific primers.  $\Delta Ct (Ct_{KD} - Ct_{WT})$  was used to calculate mRNA reduction (%) between wild-type and knockdown cells using the following formula:  $(1 - 1/2^{\Delta Ct}) \times 100\%$ .



Western blotting analysis. BAG1 protein expression in wild-type (WT) and shRNA knockdown

### SUPPORT

SUPPORT@GENUINBIOTECH.COM  
TEL: +1-540-855-7041

### ORDERS

SALES@GENUINBIOTECH.COM  
FAX: +1-540-855-7041

[WWW.GENUINBIOTECH.COM](http://WWW.GENUINBIOTECH.COM)

## Human BAG1 Knockdown Cell Line (WB-Validated)

PAGE 3

(KD) HeLa cells was detected using Western blotting. Hsp90  $\alpha$   $\alpha$  served as a loading control. The blots were incubated with primary antibodies (Cat#61340, 1:5,000) against BAG1 and Hsp90  $\alpha$  , respectively, followed by incubating with HRP-conjugated goat anti-rabbit secondary antibody (Cat#201, 1:20,000). Images were developed using FeQ™ ECL Substrate Kit (Cat#226).

---

### SUPPORT

SUPPORT@GENUINBIOTECH.COM  
TEL: +1-540-855-7041

### ORDERS

SALES@GENUINBIOTECH.COM  
FAX: +1-540-855-7041

[WWW.GENUINBIOTECH.COM](http://WWW.GENUINBIOTECH.COM)