

# Human CD44 Knockdown Cell Line (WB-Validated)



**Catalog #: C61350**

## Aliases

CD44 Molecule (Indian Blood Group); HUTCH-I; HCELL; CSPG8; MC56; Pgp1; MDU2; MDU3; MIC4; IN; Hematopoietic Cell E- And L-Selectin Ligand; GP90 Lymphocyte Homing/ Adhesion Receptor; Chondroitin Sulfate Proteoglycan 8; Extracellular Matrix Receptor III; Homing Cell Adhesion Molecule; Heparan Sulfate Proteoglycan; Phagocytic Glycoprotein 1; Phagocyte Glycoprotein 1; Hyaluronate Receptor; In(Lu) Related-P80; Hermes Antigen; CD44 Antigen; Hermes-1; ECMR-III; HUTCH-1; ECM-III; Epican; PGP-1; CD44R; CDw44; H-CAM; LHR; CD44 Antigen (Homing Function And Indian Blood Group System); Homing Function And Indian Blood Group System; Extracellular Matrix Receptor-III; Cell Surface Glycoprotein CD44; Indian Blood Group Antigen; Phagocytic Glycoprotein I; Soluble CD44; CDW44; PGP-I

## Background

Gene Name: CD44

NCBI Gene Entry: [960](#)

## Storage

Store at liquid nitrogen for 1 year.

## Kit Components

1. Human CD44 Knockdown Cell Line (Wb-Validated)
2. Wild-type cell line

## Parental Cell Line

Human cell line supplied by the client

## Validation Methods

RT-qPCR, Western blotting (WB)

## Shipping

Shipped on Dry Ice.

## Instructions For Use

This knockdown cell line should be paired with wild-type cell line for use.

**Note:** This product is for research use only.

---

### SUPPORT

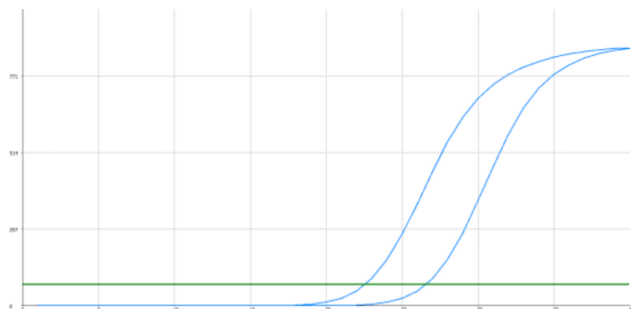
SUPPORT@GENUINBIOTECH.COM  
TEL: +1-540-855-7041

### ORDERS

SALES@GENUINBIOTECH.COM  
FAX: +1-540-855-7041

[WWW.GENUINBIOTECH.COM](http://WWW.GENUINBIOTECH.COM)

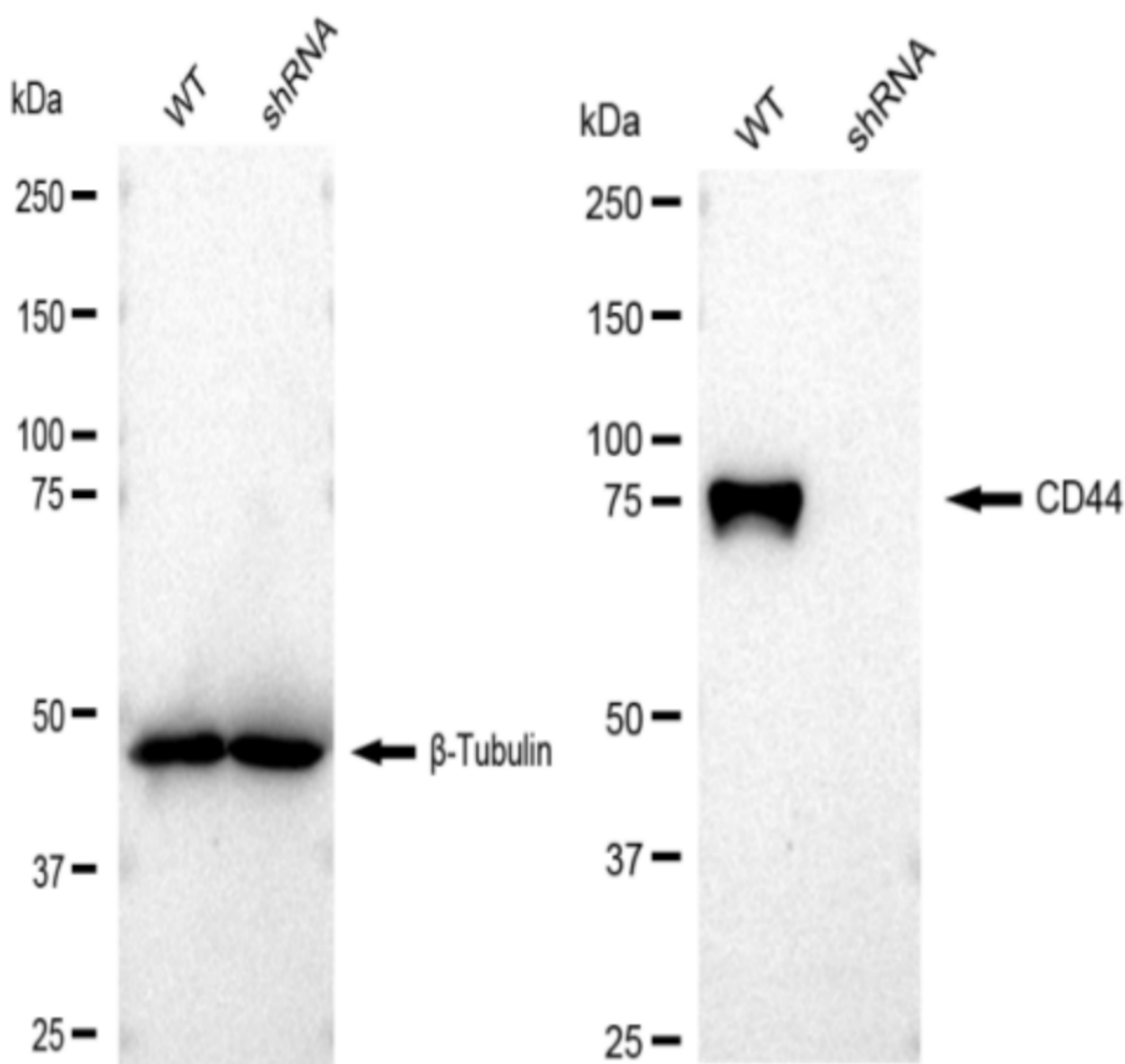
## Validation Data



Genotype	Ct Value
Wild-Type	22.28
Knock-Down	26.29
$\Delta Ct (Ct_{KD} - Ct_{WT})$	4.01
% mRNA Reduction	↓ 94%

Copyright ©2024 Genuin Biotechnologies LLC

RT-qPCR analysis. HeLa cells were infected with CD44-specific shRNA lentiviral particles, total RNA was extracted from wild-type and knockdown cells, RT-qPCR was performed using gene-specific primers.  $\Delta Ct (Ct_{KD} - Ct_{WT})$  was used to calculate mRNA reduction (%) between wild-type and knockdown cells using the following formula:  $(1 - 1/2^{\Delta Ct}) \times 100\%$ .



Copyright ©2024 Genuin Biotechnologies LLC

Western blotting analysis. CD44 protein expression in wild-type (WT) and shRNA knockdown (KD) HeLa cells was detected using Western blotting.  $\beta$ -Tubulin  $\alpha$  served as a loading control. The blots were incubated with primary antibodies (Cat#61350, 1:5,000) against CD44 and  $\beta$ -Tubulin, respectively, followed by incubating with HRP-conjugated goat anti-rabbit secondary antibody (Cat#201, 1:20,000). Images were developed using FeQ™ ECL Substrate Kit (Cat#226).