

Human CTSD Knockdown Cell Line (WB-Validated)



Catalog #: C61363

Aliases

CTSD; Cathepsin D; CLN10; CPSD; Ceroid-Lipofuscinosis, Neuronal 10; EC 3.4.23.5; Epididymis Secretory Sperm Binding Protein Li 130P; Cathepsin D (Lysosomal Aspartyl Protease); Lysosomal Aspartyl Peptidase; Lysosomal Aspartyl Protease; HEL-S-130P; EC 3.4.23

Background

Gene Name: CTSD
NCBI Gene Entry: [1509](#)

Storage

Store at liquid nitrogen for 1 year.

Kit Components

1. Human CTSD Knockdown Cell Line (Wb-Validated)
2. Wild-type cell line

Parental Cell Line

Human cell line supplied by the client

Validation Methods

RT-qPCR, Western blotting (WB)

Shipping

Shipped on Dry Ice.

Instructions For Use

This knockdown cell line should be paired with wild-type cell line for use.

Note: This product is for research use only.

Validation Data

SUPPORT

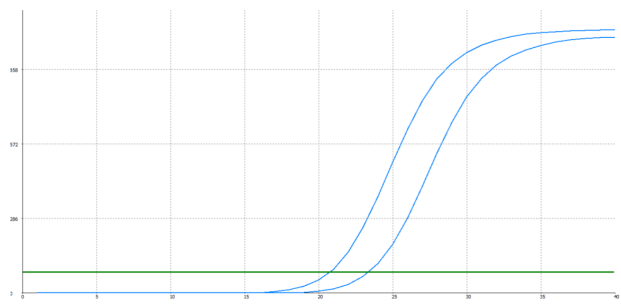
SUPPORT@GENUINBIOTECH.COM
TEL: +1-540-855-7041

ORDERS

SALES@GENUINBIOTECH.COM
FAX: +1-540-855-7041

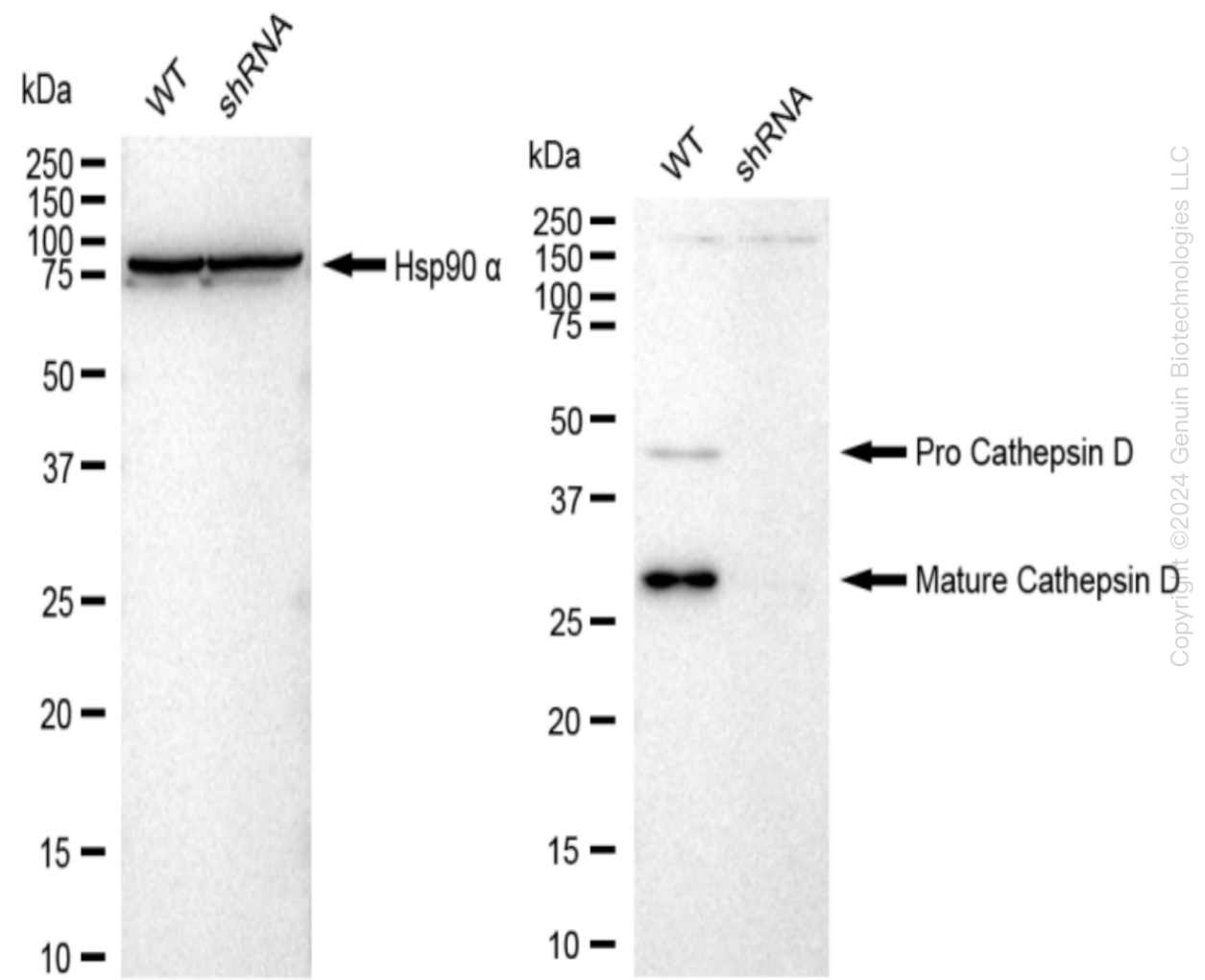
WWW.GENUINBIOTECH.COM

Human CTSD Knockdown Cell Line (WB-Validated)



Genotype	Ct Value
Wild-Type	20.54
Knock-Down	23.14
Δ Ct (Ct _{KD} -Ct _{WT})	2.6
% mRNA Reduction	↓ 84%

RT-qPCR analysis. HeLa cells were infected with CTSD-specific shRNA lentiviral particles, total RNA was extracted from wild-type and knockdown cells, RT-qPCR was performed using gene-specific primers. Δ Ct (Ct_{KD}-Ct_{WT}) was used to calculate mRNA reduction (%) between wild-type and knockdown cells using the following formula: $(1-1/2^{\Delta$ Ct) x 100%.



Western blotting analysis. CTSD protein expression in wild-type (WT) and shRNA knockdown

SUPPORT

SUPPORT@GENUINBIOTECH.COM
TEL: +1-540-855-7041

ORDERS

SALES@GENUINBIOTECH.COM
FAX: +1-540-855-7041

WWW.GENUINBIOTECH.COM

Human CTSD Knockdown Cell Line (WB-Validated)

PAGE 3

(KD) HeLa cells was detected using Western blotting. Hsp90 α served as a loading control. The blots were incubated with primary antibodies (Cat#61363, 1:5,000) against CTSD and Hsp90 α , respectively, followed by incubating with HRP-conjugated goat anti-rabbit secondary antibody (Cat#201, 1:20,000). Images were developed using FeQ™ ECL Substrate Kit (Cat#226).

SUPPORT

SUPPORT@GENUINBIOTECH.COM
TEL: +1-540-855-7041

ORDERS

SALES@GENUINBIOTECH.COM
FAX:+1-540-855-7041

WWW.GENUINBIOTECH.COM