

Human ANPEP Knockdown Cell Line (WB-Validated)



Catalog #: C61377

Aliases

ANPEP; Alanyl Aminopeptidase, Membrane; AP-N; HAPN; Microsomal Aminopeptidase; Aminopeptidase N; Aminopeptidase M; LAP1; P150; CD13; PEPN; Myeloid Plasma Membrane Glycoprotein CD13; Alanyl (Membrane) Aminopeptidase; Membrane Alanyl Aminopeptidase; EC 3.4.11.2; Gp150; GP150; AP-M; APN; Alanyl; Aminopeptidase; CD13 Antigen; EC 3.4.11

Background

Gene Name: ANPEP

NCBI Gene Entry: [290](#)

Storage

Store at liquid nitrogen for 1 year.

Kit Components

1. Human ANPEP Knockdown Cell Line (Wb-Validated)
2. Wild-type cell line

Parental Cell Line

Human cell line supplied by the client

Validation Methods

RT-qPCR, Western blotting (WB)

Shipping

Shipped on Dry Ice.

Instructions For Use

This knockdown cell line should be paired with wild-type cell line for use.

Note: This product is for research use only.

Validation Data

SUPPORT

SUPPORT@GENUINBIOTECH.COM
TEL: +1-540-855-7041

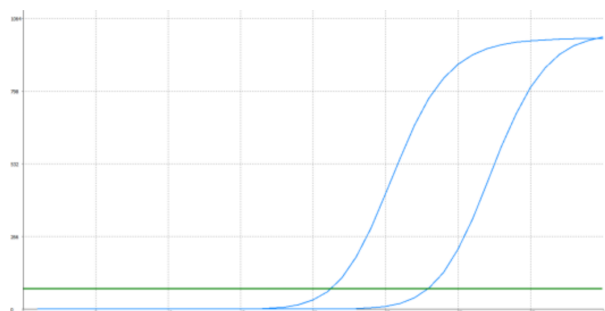
ORDERS

SALES@GENUINBIOTECH.COM
FAX: +1-540-855-7041

WWW.GENUINBIOTECH.COM

Human ANPEP Knockdown Cell Line (WB-Validated)

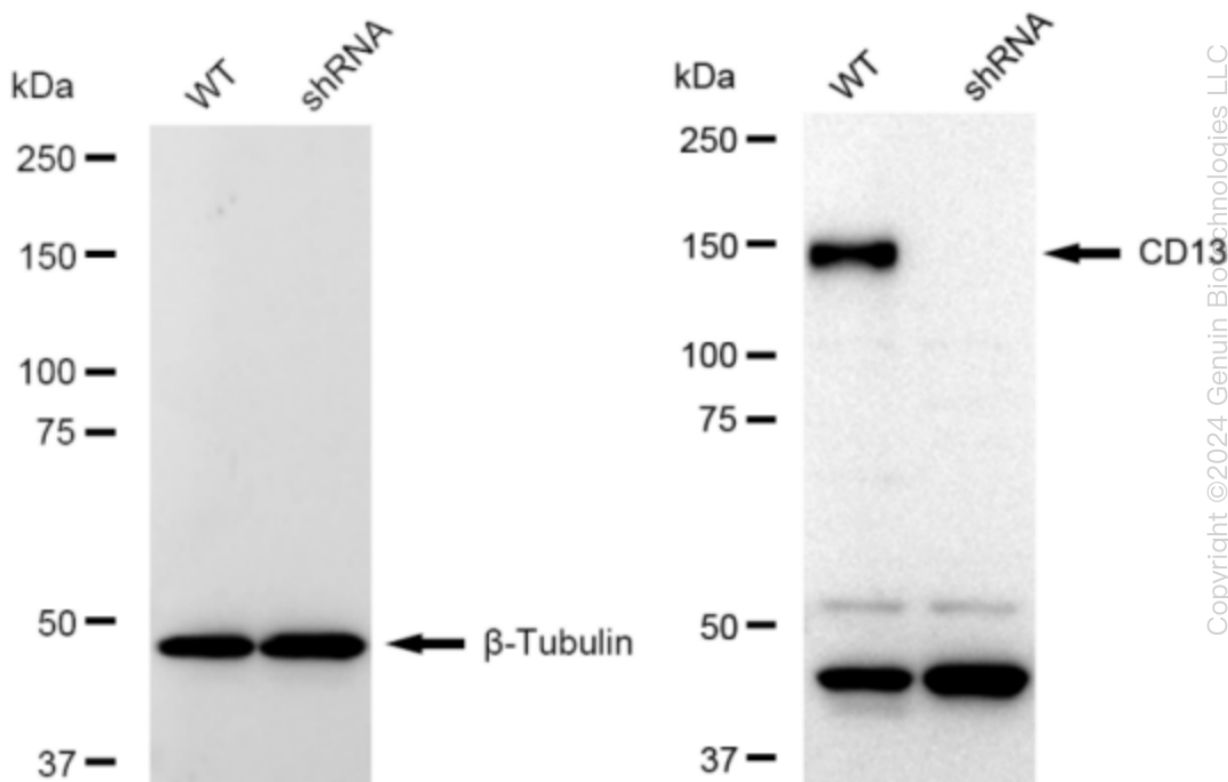
PAGE 2



Genotype	Ct Value
Wild-Type	21.13
Knock-Down	27.83
$\Delta Ct (Ct_{KD} - Ct_{WT})$	6.7
% mRNA Reduction	↓ 99%

Copyright ©2024 Genuin Biotechnologies LLC

RT-qPCR analysis. HeLa cells were infected with ANPEP-specific shRNA lentiviral particles, total RNA was extracted from wild-type and knockdown cells, RT-qPCR was performed using gene-specific primers. $\Delta Ct (Ct_{KD} - Ct_{WT})$ was used to calculate mRNA reduction (%) between wild-type and knockdown cells using the following formula: $(1 - 1/2^{\Delta Ct}) \times 100\%$.



Copyright ©2024 Genuin Biotechnologies LLC

Western blotting analysis. ANPEP protein expression in wild-type (WT) and shRNA knockdown (KD) HeLa cells was detected using Western blotting. β -Tubulin served as a loading control. The blots were incubated with primary antibodies (Cat#61377, 1:5,000) against ANPEP and β -Tubulin, respectively, followed by incubating with HRP-conjugated goat anti-rabbit secondary antibody (Cat#201, 1:20,000). Images were developed using FeQ™ ECL Substrate Kit (Cat#226).

SUPPORT

SUPPORT@GENUINBIOTECH.COM
TEL: +1-540-855-7041

ORDERS

SALES@GENUINBIOTECH.COM
FAX: +1-540-855-7041

WWW.GENUINBIOTECH.COM