

# Human CD36 Knockdown Cell Line (WB-Validated)



**Catalog #: C61381**

## Aliases

CD36; CD36 Molecule; GPIIIB; GPIV; GP3B; FAT; GP4; Platelet Glycoprotein 4; Fatty Acid Translocase; SCARB3; CD36 Antigen (Collagen Type I Receptor, Thrombospondin Receptor); CD36 Molecule (Thrombospondin Receptor); Leukocyte Differentiation Antigen CD36; Platelet Glycoprotein IV; Glycoprotein IIb; PAS IV; Scavenger Receptor Class B, Member 3; Scavenger Receptor Class B Member 3; Platelet Collagen Receptor; Thrombospondin Receptor; Cluster Determinant 36; PAS-4 Protein; CD36 Antigen; BDPLT10; CHDS7; PASIV; PAS-4

## Background

Gene Name: CD36

NCBI Gene Entry: [948](#)

## Storage

Store at liquid nitrogen for 1 year.

## Kit Components

1. Human CD36 Knockdown Cell Line (Wb-Validated)
2. Wild-type cell line

## Parental Cell Line

Human cell line supplied by the client

## Validation Methods

RT-qPCR, Western blotting (WB)

## Shipping

Shipped on Dry Ice.

## Instructions For Use

This knockdown cell line should be paired with wild-type cell line for use.

**Note:** This product is for research use only.

## Validation Data

---

### SUPPORT

SUPPORT@GENUINBIOTECH.COM  
TEL: +1-540-855-7041

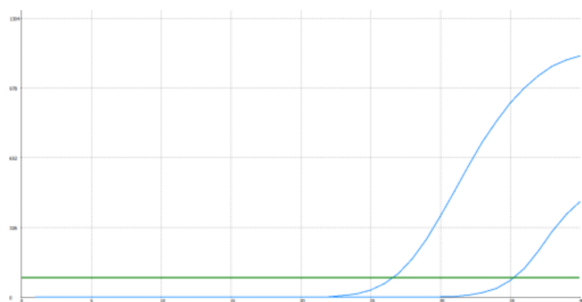
### ORDERS

SALES@GENUINBIOTECH.COM  
FAX: +1-540-855-7041

[WWW.GENUINBIOTECH.COM](http://WWW.GENUINBIOTECH.COM)

## Human CD36 Knockdown Cell Line (WB-Validated)

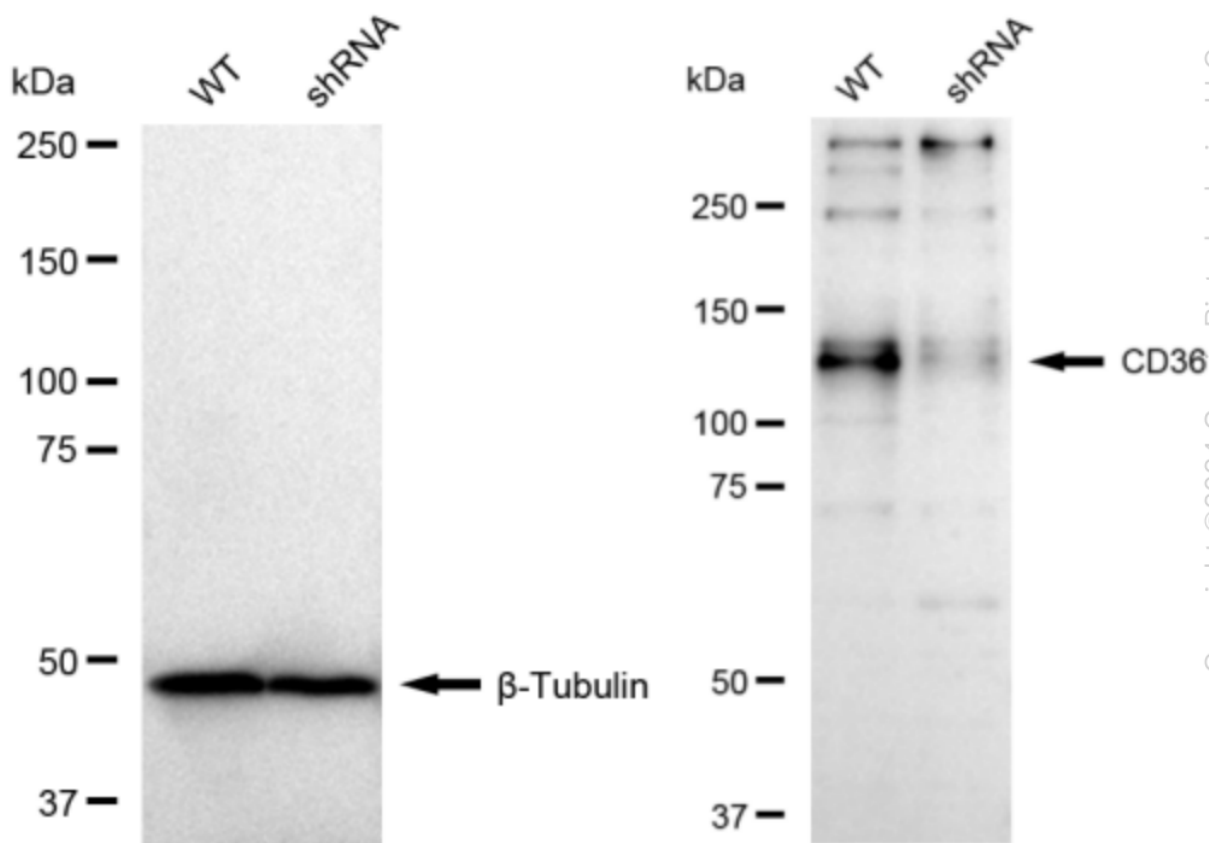
PAGE 2



Genotype	Ct Value
Wild-Type	26.33
Knock-Down	33.47
$\Delta Ct (Ct_{KD} - Ct_{WT})$	7.14
% mRNA Reduction	↓ 99%

Copyright ©2024 Genuin Biotechnologies LLC

RT-qPCR analysis. HeLa cells were infected with CD36-specific shRNA lentiviral particles, total RNA was extracted from wild-type and knockdown cells, RT-qPCR was performed using gene-specific primers.  $\Delta Ct (Ct_{KD} - Ct_{WT})$  was used to calculate mRNA reduction (%) between wild-type and knockdown cells using the following formula:  $(1 - 1/2^{\Delta Ct}) \times 100\%$ .



Copyright ©2024 Genuin Biotechnologies LLC

Western blotting analysis. CD36 protein expression in wild-type (WT) and shRNA knockdown (KD) HeLa cells was detected using Western blotting.  $\beta$ -Tubulin served as a loading control. The blots were incubated with primary antibodies (Cat#61381, 1:5,000) against CD36 and  $\beta$ -Tubulin, respectively, followed by incubating with HRP-conjugated goat anti-rabbit secondary antibody

### SUPPORT

SUPPORT@GENUINBIOTECH.COM  
TEL: +1-540-855-7041

### ORDERS

SALES@GENUINBIOTECH.COM  
FAX: +1-540-855-7041

[WWW.GENUINBIOTECH.COM](http://WWW.GENUINBIOTECH.COM)

## **Human CD36 Knockdown Cell Line (WB-Validated)**

PAGE 3

(Cat#201, 1:20,000). Images were developed using FeQ™ ECL Substrate Kit (Cat#226).

---

### **SUPPORT**

SUPPORT@GENUINBIOTECH.COM  
TEL: +1-540-855-7041

### **ORDERS**

SALES@GENUINBIOTECH.COM  
FAX: +1-540-855-7041

**WWW.GENUINBIOTECH.COM**