

Human CDC25C Knockdown Cell Line (WB-Validated)



Catalog #: C61384

Aliases

CDC25C; Cell Division Cycle 25C; M-Phase Inducer Phosphatase 3; PPP1R60; Protein Phosphatase 1, Regulatory Subunit 60; EC 3.1.3.48; CDC25; Dual Specificity Phosphatase CDC25C; Dual Specificity Phosphatase Cdc25C; Phosphotyrosine Phosphatase; CDC25 Homolog C (S. Pombe); Mitosis Inducer CDC25; CDC25 Homolog C

Background

Gene Name: CDC25C
NCBI Gene Entry: 995

Storage

Store at liquid nitrogen for 1 year.

Kit Components

1. Human CDC25C Knockdown Cell Line (Wb-Validated)
2. Wild-type cell line

Parental Cell Line

Human cell line supplied by the client

Validation Methods

RT-qPCR, Western blotting (WB)

Shipping

Shipped on Dry Ice.

Instructions For Use

This knockdown cell line should be paired with wild-type cell line for use.

Note: This product is for research use only.

Validation Data

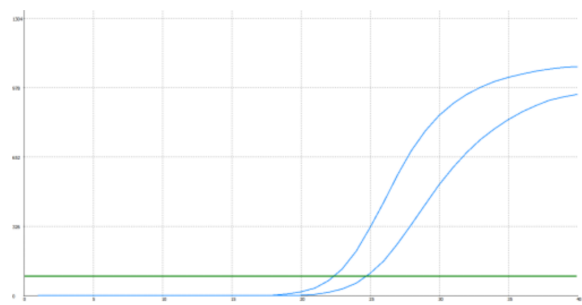
SUPPORT

SUPPORT@GENUINBIOTECH.COM
TEL: +1-540-855-7041

ORDERS

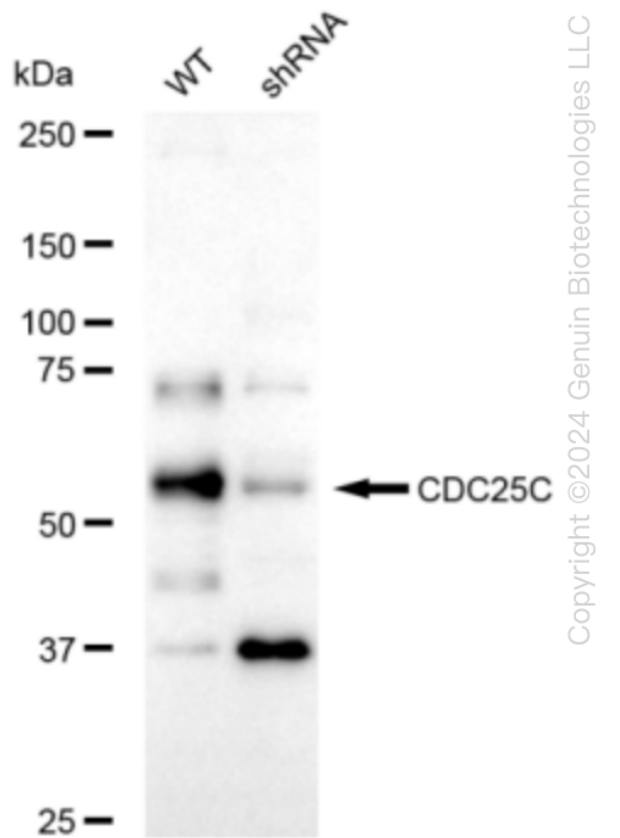
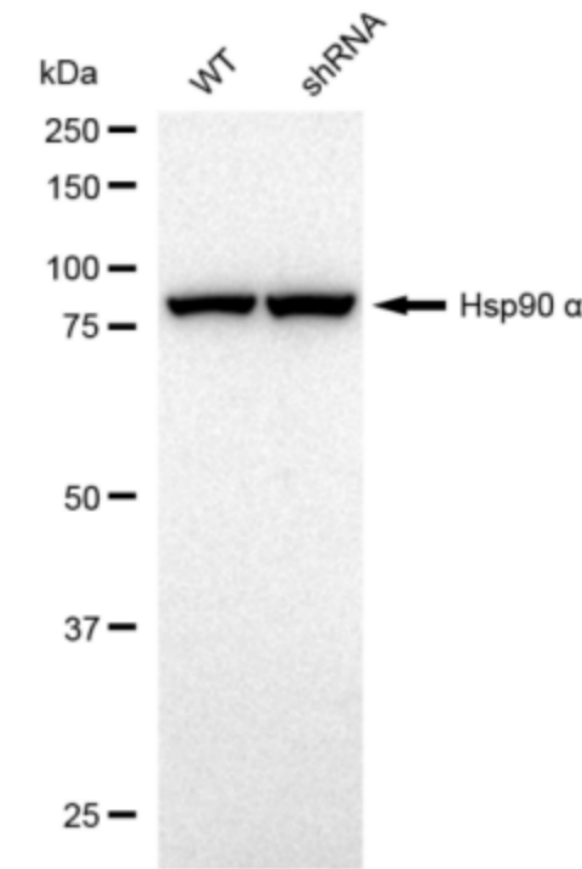
SALES@GENUINBIOTECH.COM
FAX: +1-540-855-7041

WWW.GENUINBIOTECH.COM



Genotype	Ct Value
Wild-Type	22.11
Knock-Down	24.17
$\Delta Ct (Ct_{KD}-Ct_{WT})$	2.06
% mRNA Reduction	↓ 76%

RT-qPCR analysis. HeLa cells were infected with CDC25C-specific shRNA lentiviral particles, total RNA was extracted from wild-type and knockdown cells, RT-qPCR was performed using gene-specific primers. $\Delta Ct (Ct_{KD}-Ct_{WT})$ was used to calculate mRNA reduction (%) between wild-type and knockdown cells using the following formula: $(1-1/2^{\Delta Ct}) \times 100\%$.



Western blotting analysis. CDC25C protein expression in wild-type (WT) and shRNA knockdown (KD) HeLa cells was detected using Western blotting. Hsp90 α served as a loading control. The blots were incubated with primary antibodies (Cat#61384, 1:5,000) against CDC25C and Hsp90 α ,

Human CDC25C Knockdown Cell Line (WB-Validated)

PAGE 3

respectively, followed by incubating with HRP-conjugated goat anti-rabbit secondary antibody (Cat#201, 1:20,000). Images were developed using FeQ™ ECL Substrate Kit (Cat#226).

SUPPORT

SUPPORT@GENUINBIOTECH.COM
TEL: +1-540-855-7041

ORDERS

SALES@GENUINBIOTECH.COM
FAX: +1-540-855-7041

WWW.GENUINBIOTECH.COM