

Human CA2 Knockdown Cell Line (WB-Validated)



Catalog #: C61399

Aliases

CA2; Carbonic Anhydrase 2; CA-II; Carbonic Anhydrase II; CAII; Carbonate Dehydratase II; Cyanamide Hydratase CA2; Carbonic Anhydrase C; EC 4.2.1.1; Car2; CAC; Epididymis Secretory Protein Li 282; Epididymis Luminal Protein 76; Carbonic Anhydrase B; Carbonic Dehydratase; EC 4.2.1.69; HEL-S-282; HEL-76; CAR2

Background

Gene Name: CA2

NCBI Gene Entry: [760](#)

Storage

Store at liquid nitrogen for 1 year.

Kit Components

1. Human CA2 Knockdown Cell Line (Wb-Validated)
2. Wild-type cell line

Parental Cell Line

Human cell line supplied by the client

Validation Methods

RT-qPCR, Western blotting (WB)

Shipping

Shipped on Dry Ice.

Instructions For Use

This knockdown cell line should be paired with wild-type cell line for use.

Note: This product is for research use only.

Validation Data

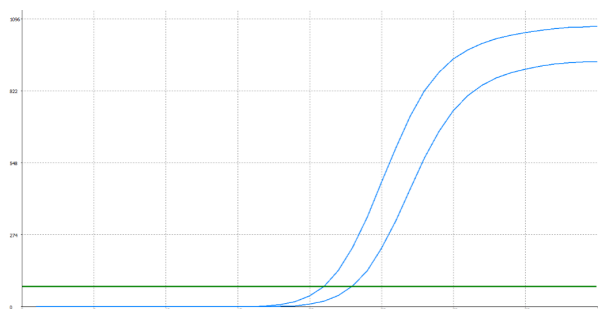
SUPPORT

SUPPORT@GENUINBIOTECH.COM
TEL: +1-540-855-7041

ORDERS

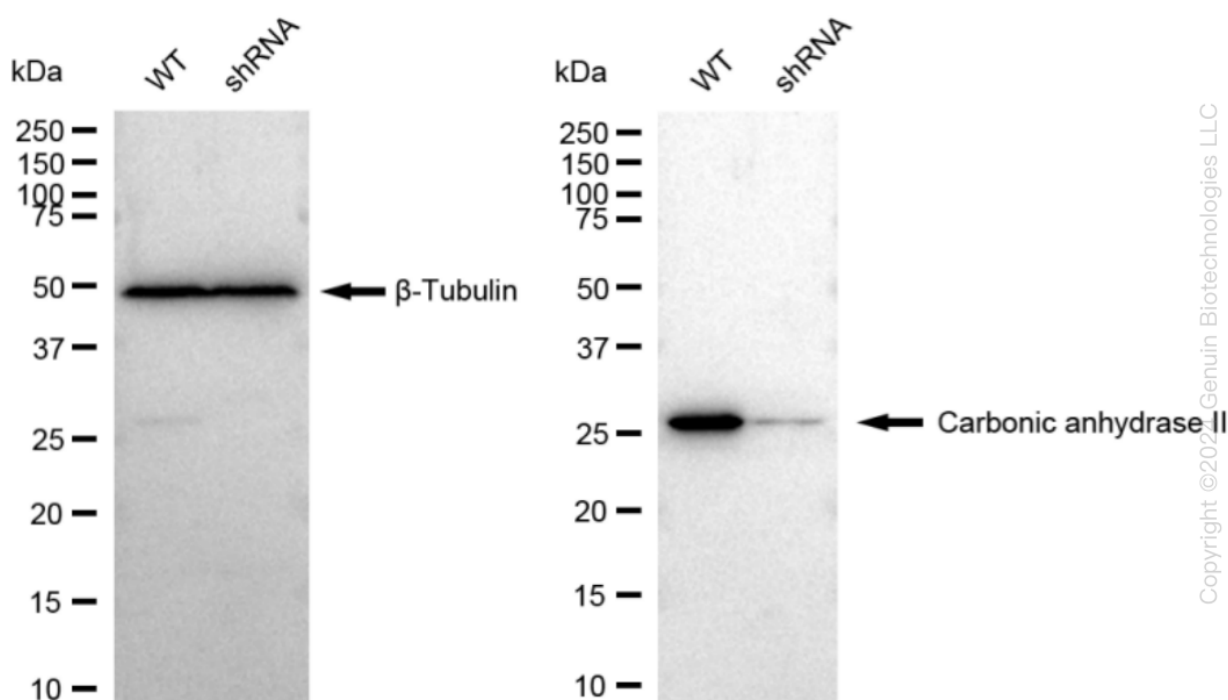
SALES@GENUINBIOTECH.COM
FAX: +1-540-855-7041

WWW.GENUINBIOTECH.COM



| Genotype | Ct Value |
|---------------------------------|----------|
| Wild-Type | 20.94 |
| Knock-Down | 22.65 |
| $\Delta Ct (Ct_{KD} - Ct_{WT})$ | 1.71 |
| % mRNA Reduction | ↓ 69% |

RT-qPCR analysis. HeLa cells were infected with CA2-specific shRNA lentiviral particles, total RNA was extracted from wild-type and knockdown cells, RT-qPCR was performed using gene-specific primers. $\Delta Ct (Ct_{KD} - Ct_{WT})$ was used to calculate mRNA reduction (%) between wild-type and knockdown cells using the following formula: $(1 - 1/2^{\Delta Ct}) \times 100\%$.



Western blotting analysis. CA2 protein expression in wild-type (WT) and shRNA knockdown (KD) HeLa cells was detected using Western blotting. β -Tubulin served as a loading control. The blots were incubated with primary antibodies against CA2 and β -Tubulin, respectively, followed by incubating with HRP-conjugated goat anti-rabbit secondary antibody. Images were developed using FeQ™ ECL Substrate Kit.