

Human CAPN2 Knockdown Cell Line (WB-Validated)



Catalog #: C61400

Aliases

CAPN2; Calpain 2; CANPL2; MCANP; Calcium-Activated Neutral Proteinase; Calpain 2, (M/II) Large Subunit; Calpain-2 Catalytic Subunit; Millimolar-Calpain; Calpain M-Type; EC 3.4.22.53; M-Calpain; CANPml; CANP; Calpain 2, Large [Catalytic] Subunit; Calpain, Large Polypeptide L2; Calpain Large Polypeptide L2; Calpain 2, Large Subunit; Calpain-2 Large Subunit; EC 3.4.22; CANPML; CANP2

Background

Gene Name: CAPN2

NCBI Gene Entry: [824](#)

Storage

Store at liquid nitrogen for 1 year.

Kit Components

1. Human CAPN2 Knockdown Cell Line (Wb-Validated)
2. Wild-type cell line

Parental Cell Line

Human cell line supplied by the client

Validation Methods

RT-qPCR, Western blotting (WB)

Shipping

Shipped on Dry Ice.

Instructions For Use

This knockdown cell line should be paired with wild-type cell line for use.

Note: This product is for research use only.

Validation Data

SUPPORT

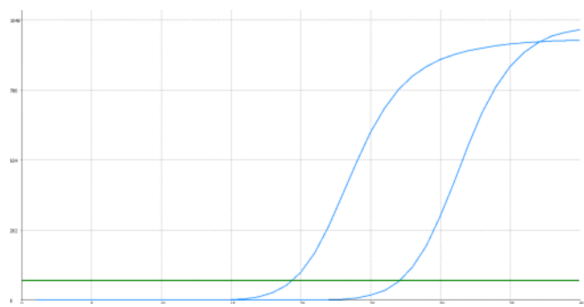
SUPPORT@GENUINBIOTECH.COM
TEL: +1-540-855-7041

ORDERS

SALES@GENUINBIOTECH.COM
FAX: +1-540-855-7041

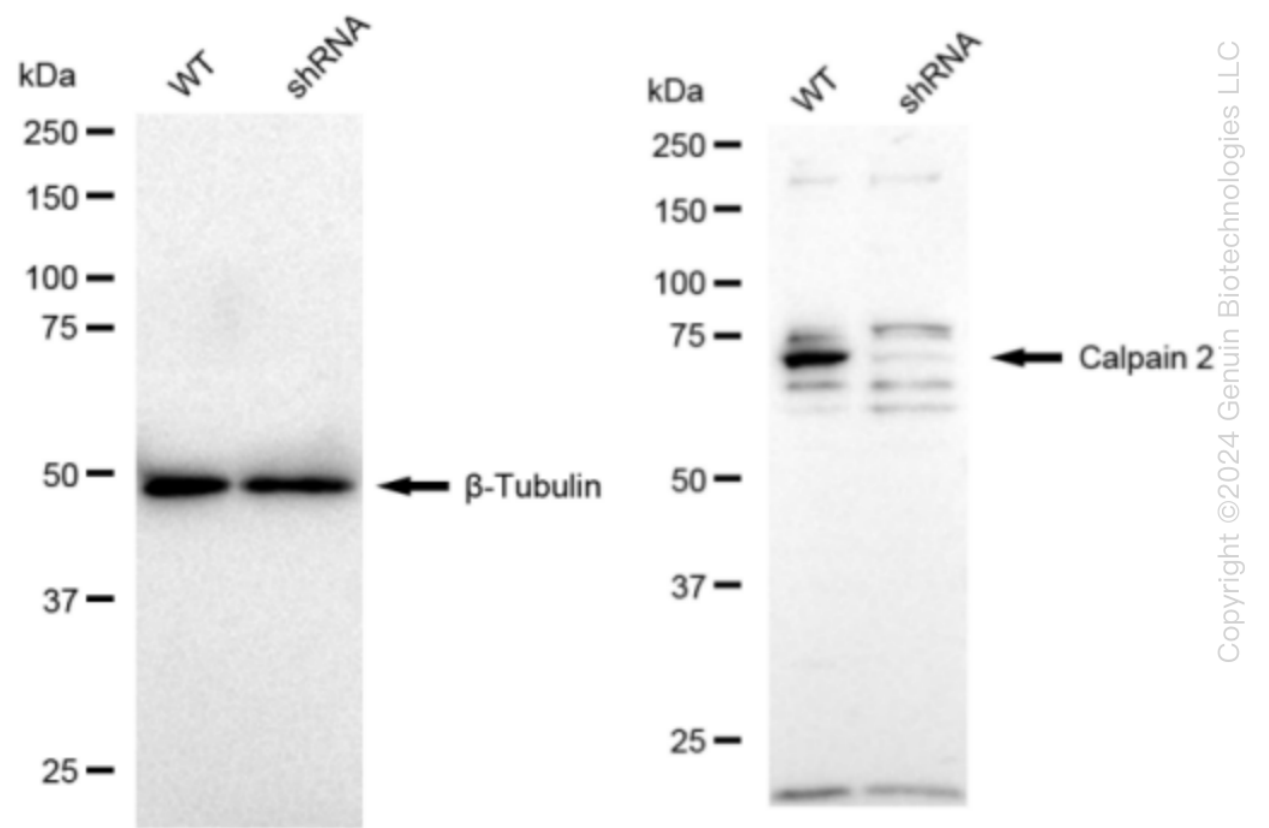
WWW.GENUINBIOTECH.COM

Human CAPN2 Knockdown Cell Line (WB-Validated)



Genotype	Ct Value
Wild-Type	19.25
Knock-Down	27.05
$\Delta Ct (Ct_{KD}-Ct_{WT})$	7.80
% mRNA Reduction	↓ 99.6%

RT-qPCR analysis. HeLa cells were infected with CAPN2-specific shRNA lentiviral particles, total RNA was extracted from wild-type and knockdown cells, RT-qPCR was performed using gene-specific primers. $\Delta Ct (Ct_{KD}-Ct_{WT})$ was used to calculate mRNA reduction (%) between wild-type and knockdown cells using the following formula: $(1-1/2^{\Delta Ct}) \times 100\%$.



Western blotting analysis. CAPN2 protein expression in wild-type (WT) and shRNA knockdown (KD) HeLa cells was detected using Western blotting. β -Tubulin served as a loading control. The blots were incubated with primary antibodies (Cat#61400, 1:5,000) against CAPN2 and β -Tubulin, respectively, followed by incubating with HRP-conjugated goat anti-rabbit secondary antibody (Cat#201, 1:20,000). Images were developed using FeQ™ ECL Substrate Kit (Cat#226).

SUPPORT

SUPPORT@GENUINBIOTECH.COM
TEL: +1-540-855-7041

ORDERS

SALES@GENUINBIOTECH.COM
FAX: +1-540-855-7041

WWW.GENUINBIOTECH.COM