

Human FKBP5 Knockdown Cell Line (WB-Validated)



Catalog #: C61403

Aliases

FKBP5; FKBP Prolyl Isomerase 5; FKBP51; FKBP54; P54; 54 KDa Progesterone Receptor-Associated Immunophilin; Peptidyl-Prolyl Cis-Trans Isomerase FKBP5; 51 KDa FK506-Binding Protein; Androgen-Regulated Protein 6; HSP90-Binding Immunophilin; FK506-Binding Protein 5; FK506 Binding Protein 5; PPIase FKBP5; 51 KDa FKBP; FF1 Antigen; EC 5.2.1.8; Rotamase; FKBP-51; PPIase; Ptg-10; AIG6; Peptidylprolyl Cis-Trans Isomerase; T-Cell FK506-Binding Protein; PPIASE; PTG-10; FKBP-5

Background

Gene Name: FKBP5

NCBI Gene Entry: [2289](#)

Storage

Store at liquid nitrogen for 1 year.

Kit Components

1. Human FKBP5 Knockdown Cell Line (Wb-Validated)
2. Wild-type cell line

Parental Cell Line

Human cell line supplied by the client

Validation Methods

RT-qPCR, Western blotting (WB)

Shipping

Shipped on Dry Ice.

Instructions For Use

This knockdown cell line should be paired with wild-type cell line for use.

Note: This product is for research use only.

Validation Data

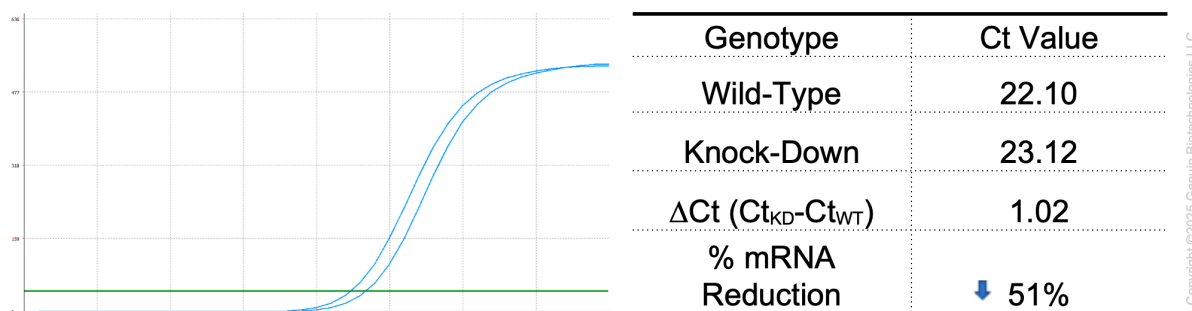
SUPPORT

SUPPORT@GENUINBIOTECH.COM
TEL: +1-540-855-7041

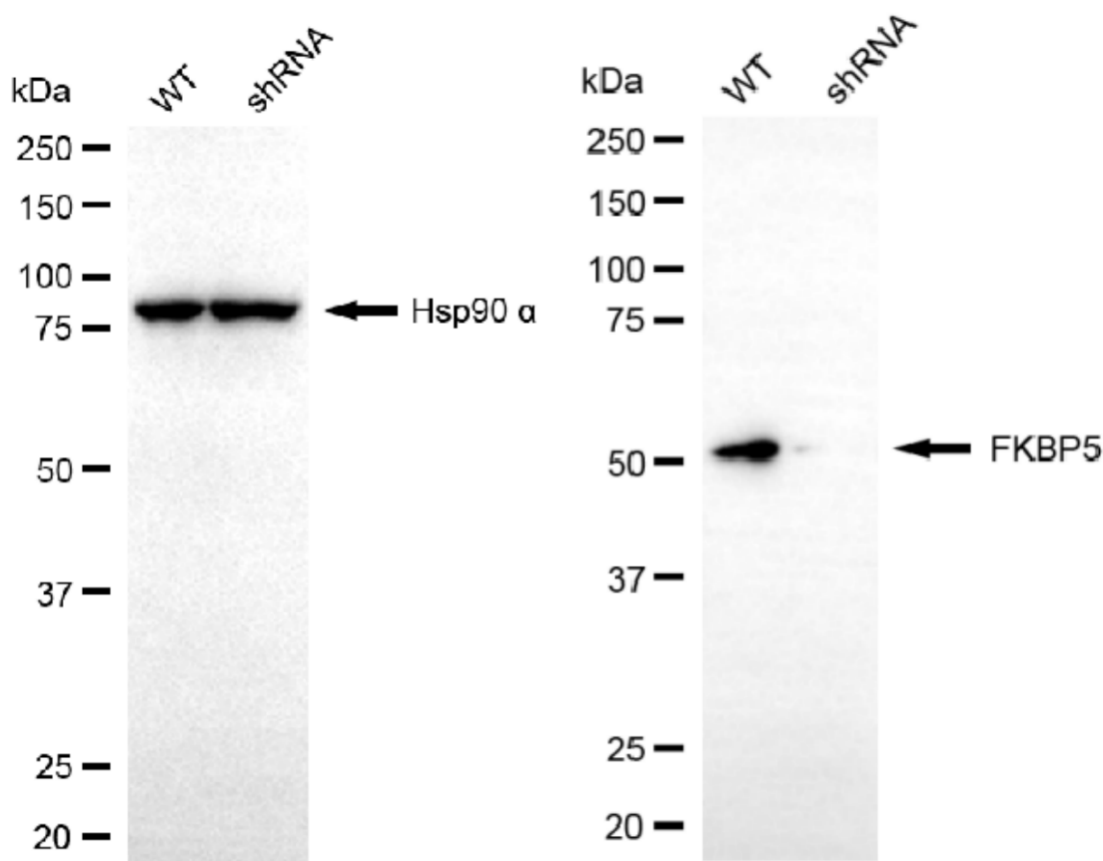
ORDERS

SALES@GENUINBIOTECH.COM
FAX: +1-540-855-7041

WWW.GENUINBIOTECH.COM



RT-qPCR analysis. HeLa cells were infected with FKBP5-specific shRNA lentiviral particles, total RNA was extracted from wild-type and knockdown cells, RT-qPCR was performed using gene-specific primers. $\Delta Ct (Ct_{KD} - Ct_{WT})$ was used to calculate mRNA reduction (%) between wild-type and knockdown cells using the following formula: $(1 - 1/2^{\Delta Ct}) \times 100\%$.



Western blotting analysis. FKBP5 protein expression in wild-type (WT) and shRNA knockdown (KD) HeLa cells was detected using Western blotting. Hsp90 α served as a loading control. The blots were incubated with primary antibodies against FKBP5 and Hsp90 α, respectively, followed by incubating with HRP-conjugated goat anti-rabbit secondary antibody. Images were developed

Human FKBP5 Knockdown Cell Line (WB-Validated)

PAGE 3

using NaQ™ ECL Substrate Kit.

SUPPORT

SUPPORT@GENUINBIOTECH.COM
TEL: +1-540-855-7041

ORDERS

SALES@GENUINBIOTECH.COM
FAX: +1-540-855-7041

WWW.GENUINBIOTECH.COM