

Human EOGT Knockdown Cell Line (WB-Validated)



Catalog #: C61408

Aliases

EOGT; EGF Domain Specific O-Linked N-Acetylglucosamine Transferase; AER61; EGF Domain-Specific O-Linked N-Acetylglucosamine (GlcNAc) Transferase; EGF Domain-Specific O-Linked N-Acetylglucosamine Transferase; Extracellular O-Linked N-Acetylglucosamine Transferase; AER61 Glycosyltransferase; FLJ33770; C3orf64; EOGT1; Chromosome 3 Open Reading Frame 64; EGF-O-GlcNAc Transferase; EC 2.4.1.255; C3ORF64; AOS4

Background

Gene Name: EOGT

NCBI Gene Entry: [285203](#)

Storage

Store at liquid nitrogen for 1 year.

Kit Components

1. Human EOGT Knockdown Cell Line (Wb-Validated)
2. Wild-type cell line

Parental Cell Line

Human cell line supplied by the client

Validation Methods

RT-qPCR, Western blotting (WB)

Shipping

Shipped on Dry Ice.

Instructions For Use

This knockdown cell line should be paired with wild-type cell line for use.

Note: This product is for research use only.

Validation Data

SUPPORT

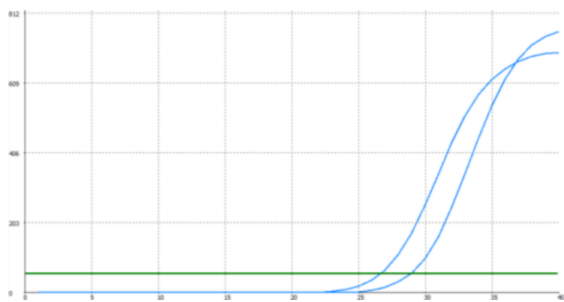
SUPPORT@GENUINBIOTECH.COM
TEL: +1-540-855-7041

ORDERS

SALES@GENUINBIOTECH.COM
FAX: +1-540-855-7041

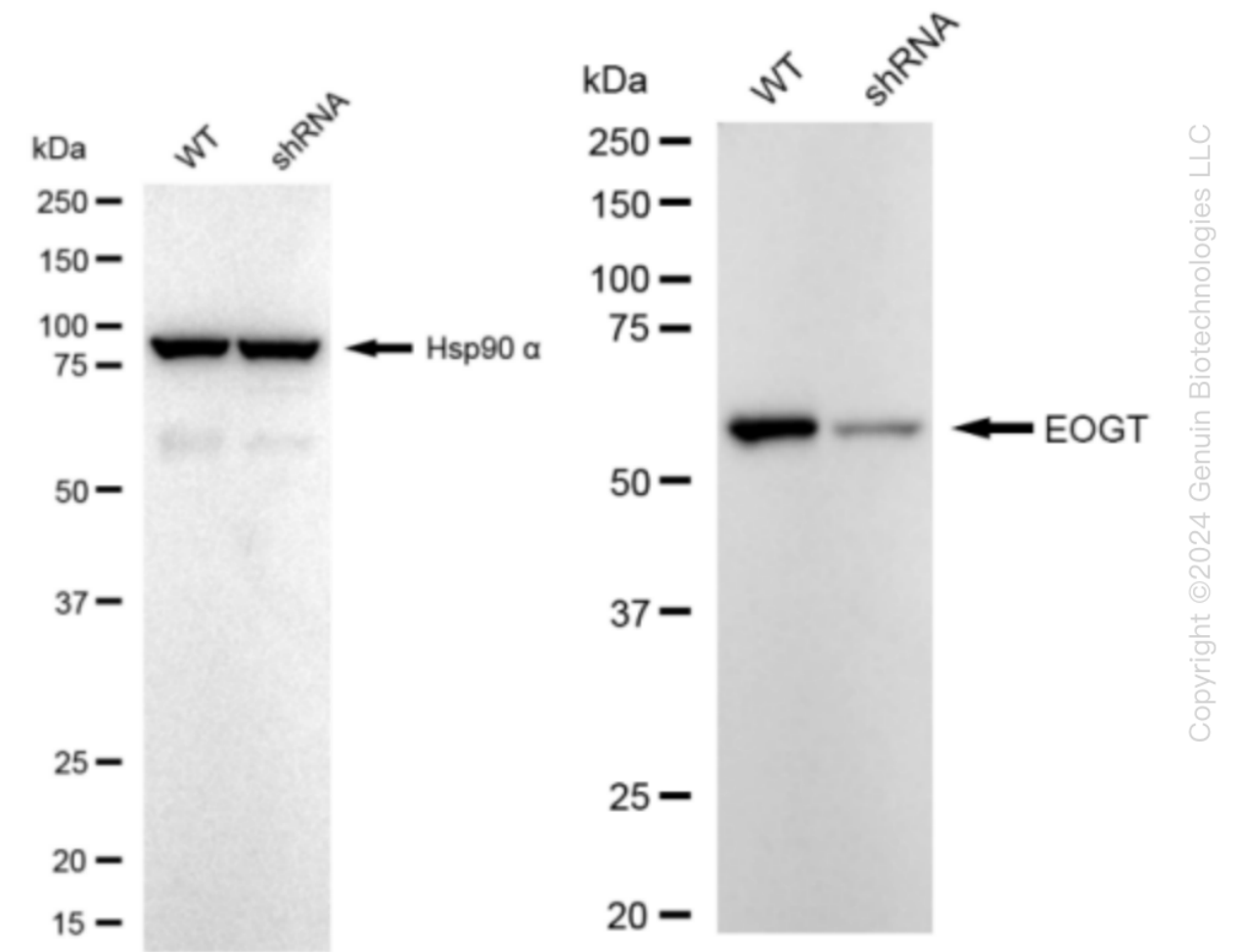
WWW.GENUINBIOTECH.COM

Human EOGT Knockdown Cell Line (WB-Validated)



Genotype	Ct Value
Wild-Type	26.48
Knock-Down	28.88
$\Delta Ct (Ct_{KD}-Ct_{WT})$	2.4
% mRNA Reduction	↓ 81%

RT-qPCR analysis. HT-1080 cells were infected with EOGT-specific shRNA lentiviral particles, total RNA was extracted from wild-type and knockdown cells, RT-qPCR was performed using gene-specific primers. $\Delta Ct (Ct_{KD}-Ct_{WT})$ was used to calculate mRNA reduction (%) between wild-type and knockdown cells using the following formula: $(1-1/2^{\Delta Ct}) \times 100\%$.



Western blotting analysis. EOGT protein expression in wild-type (WT) and shRNA knockdown (KD) HeLa cells was detected using Western blotting. Hsp90 α served as a loading control. The blots were incubated with primary antibodies (Cat#61408, 1:5,000) against EOGT and Hsp90 α , respectively, followed by incubating with HRP-conjugated goat anti-rabbit secondary antibody (Cat#201, 1:20,000). Images were developed using FeQ™ ECL Substrate Kit (Cat#226).

SUPPORT

SUPPORT@GENUINBIOTECH.COM
TEL: +1-540-855-7041

ORDERS

SALES@GENUINBIOTECH.COM
FAX:+1-540-855-7041

WWW.GENUINBIOTECH.COM

