

Human CLIC4 Knockdown Cell Line (WB-Validated)



Catalog #: C61409

Aliases

CLIC4; Chloride Intracellular Channel 4; P64H1 2; CLIC4L; H1; Intracellular Chloride Ion Channel Protein P64H1; Chloride Intracellular Channel Protein 4; DKFZP566G223; HuH1; Epididymis Secretory Sperm Binding Protein; Chloride Intracellular Channel 4 Like; MTCLIC; HUH1

Background

Gene Name: CLIC4

NCBI Gene Entry: [25932](#)

Storage

Store at liquid nitrogen for 1 year.

Kit Components

1. Human CLIC4 Knockdown Cell Line (Wb-Validated)
2. Wild-type cell line

Parental Cell Line

Human cell line supplied by the client

Validation Methods

RT-qPCR, Western blotting (WB)

Shipping

Shipped on Dry Ice.

Instructions For Use

This knockdown cell line should be paired with wild-type cell line for use.

Note: This product is for research use only.

Validation Data

SUPPORT

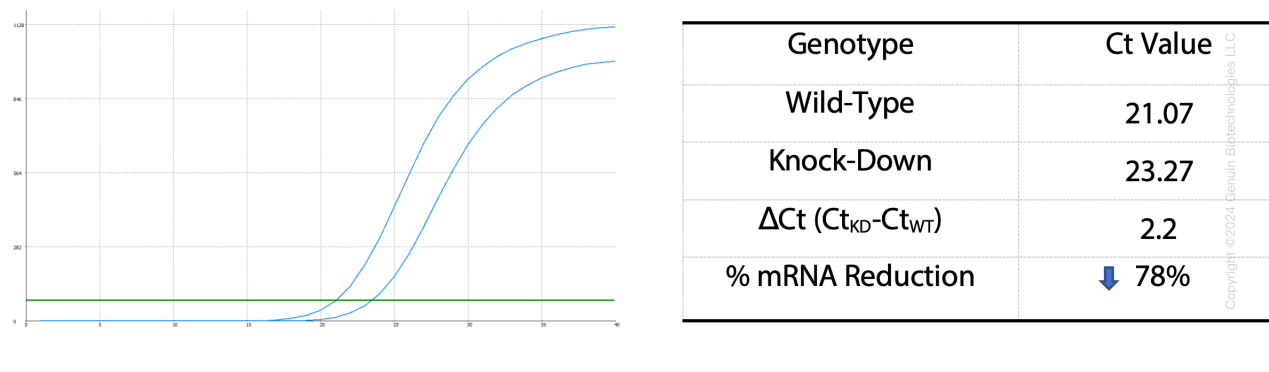
SUPPORT@GENUINBIOTECH.COM
TEL: +1-540-855-7041

ORDERS

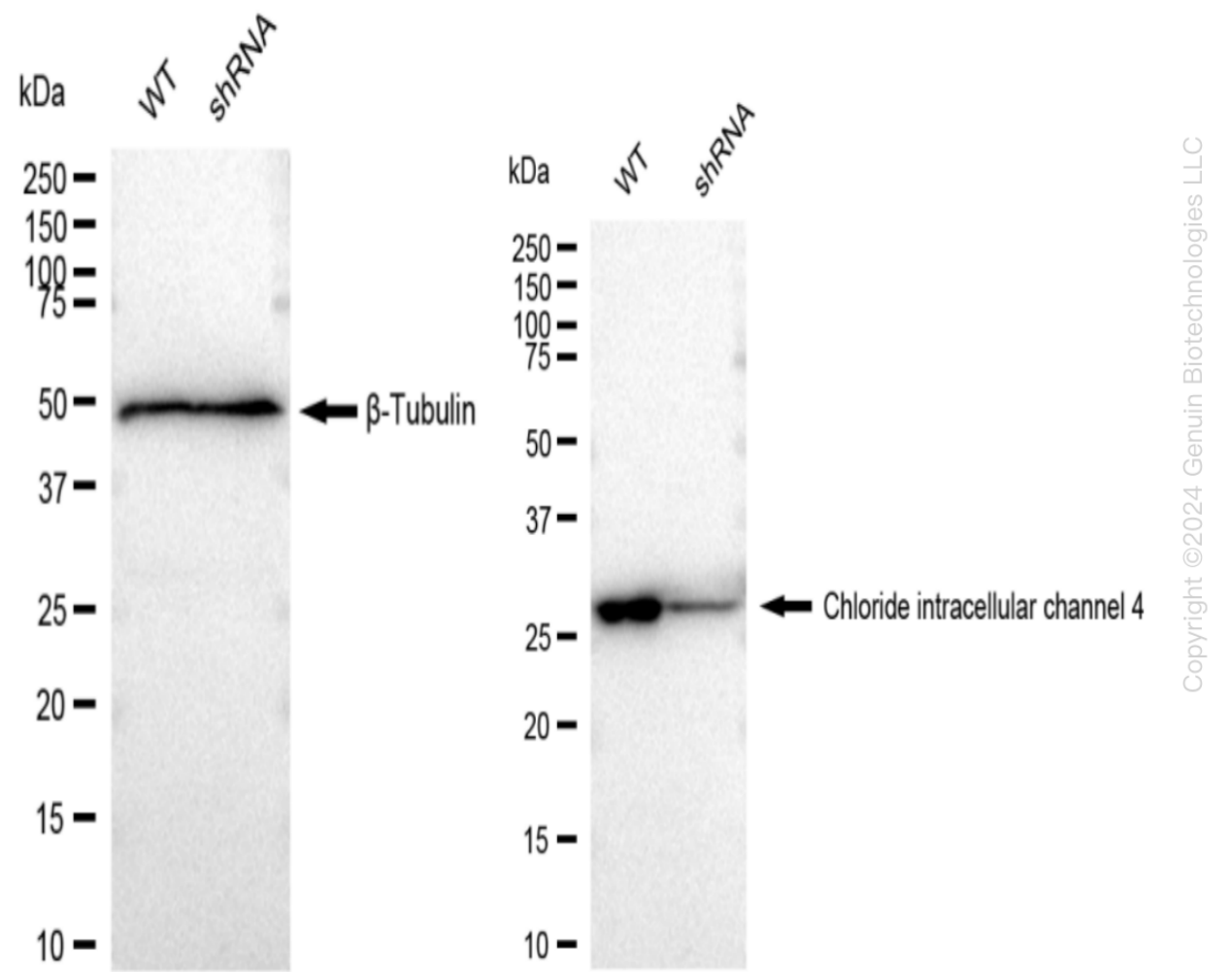
SALES@GENUINBIOTECH.COM
FAX: +1-540-855-7041

WWW.GENUINBIOTECH.COM

Human CLIC4 Knockdown Cell Line (WB-Validated)



RT-qPCR analysis. HeLa cells were infected with CLIC4-specific shRNA lentiviral particles, total RNA was extracted from wild-type and knockdown cells, RT-qPCR was performed using gene-specific primers. $\Delta Ct (Ct_{KD}-Ct_{WT})$ was used to calculate mRNA reduction (%) between wild-type and knockdown cells using the following formula: $(1-1/2^{\Delta Ct}) \times 100\%$.



Western blotting analysis. CLIC4 protein expression in wild-type (WT) and shRNA knockdown

Human CLIC4 Knockdown Cell Line (WB-Validated)

PAGE 3

(KD) HeLa cells was detected using Western blotting. β -Tubulin served as a loading control. The blots were incubated with primary antibodies (Cat#61409, 1:5,000) against CLIC4 and β -Tubulin, respectively, followed by incubating with HRP-conjugated goat anti-rabbit secondary antibody (Cat#201, 1:20,000). Images were developed using FeQ™ ECL Substrate Kit (Cat#226).

SUPPORT

SUPPORT@GENUINBIOTECH.COM
TEL: +1-540-855-7041

ORDERS

SALES@GENUINBIOTECH.COM
FAX: +1-540-855-7041

WWW.GENUINBIOTECH.COM