

Human CSDE1 Knockdown Cell Line (WB-Validated)



Catalog #: C61411

Aliases

CSDE1; Cold Shock Domain Containing E1; D1S155E; UNR; Cold Shock Domain Containing E1, RNA Binding; Cold Shock Domain-Containing Protein E1; N-Ras Upstream Gene Protein; Upstream Of NRAS; NRAS-Related; Protein UNR; KIAA0885; NRU

Background

Gene Name: CSDE1
NCBI Gene Entry: [7812](#)

Storage

Store at liquid nitrogen for 1 year.

Kit Components

1. Human CSDE1 Knockdown Cell Line (Wb-Validated)
2. Wild-type cell line

Parental Cell Line

Human cell line supplied by the client

Validation Methods

RT-qPCR, Western blotting (WB)

Shipping

Shipped on Dry Ice.

Instructions For Use

This knockdown cell line should be paired with wild-type cell line for use.

Note: This product is for research use only.

Validation Data

SUPPORT

SUPPORT@GENUINBIOTECH.COM
TEL: +1-540-855-7041

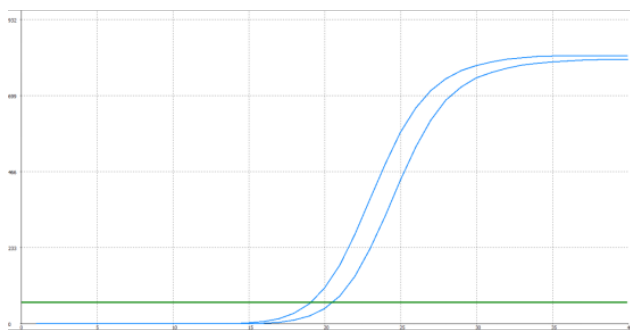
ORDERS

SALES@GENUINBIOTECH.COM
FAX: +1-540-855-7041

WWW.GENUINBIOTECH.COM

Human CSDE1 Knockdown Cell Line (WB-Validated)

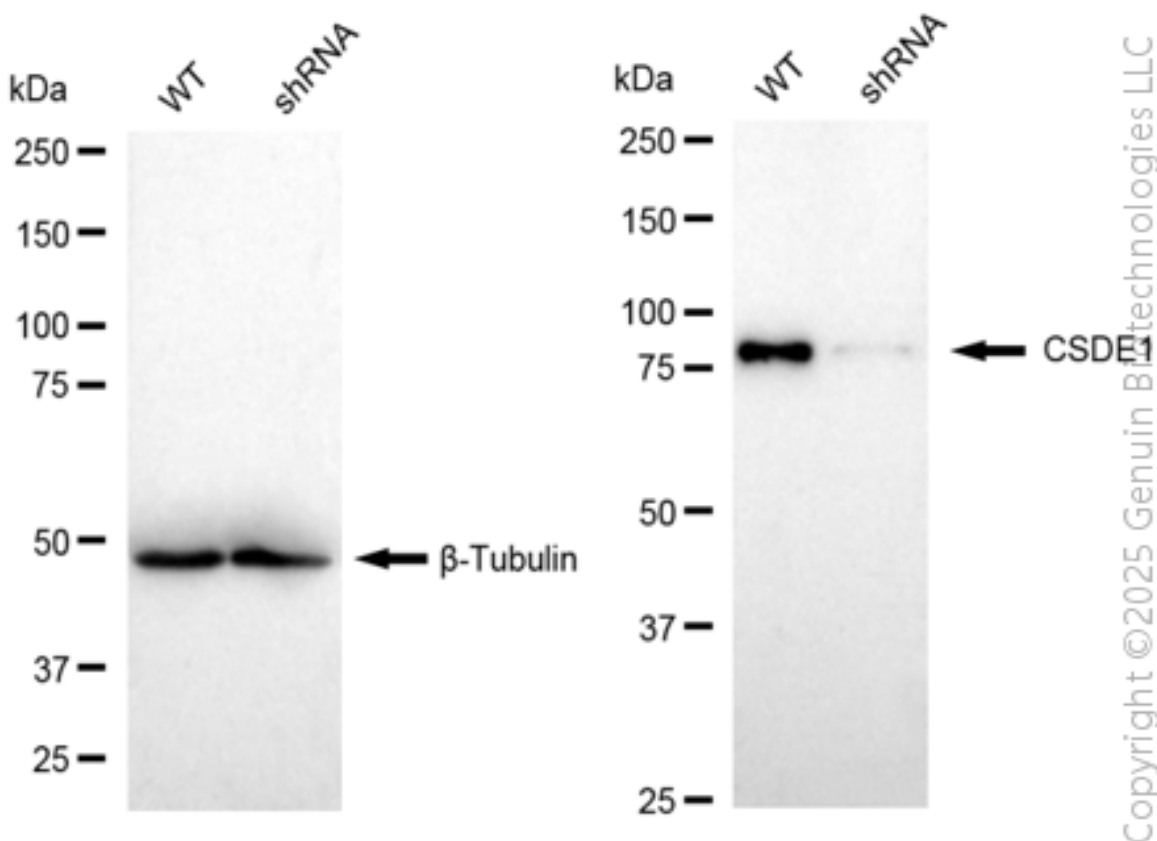
PAGE 2



Genotype	Ct Value
Wild-Type	18.91
Knock-Down	20.29
ΔCt (CtKD-CtWT)	1.38
% mRNA Reduction	62%

Copyright © 2025 Genuin Biotechnologies LLC

RT-qPCR analysis. HeLa cells were infected with CSDE1-specific shRNA lentiviral particles, total RNA was extracted from wild-type and knockdown cells, RT-qPCR was performed using gene-specific primers. ΔCt (CtKD-CtWT) was used to calculate mRNA reduction (%) between wild-type and knockdown cells using the following formula: $(1 - 1/2^{\Delta Ct}) \times 100\%$.



Copyright © 2025 Genuin Biotechnologies LLC

Western blotting analysis. CSDE1 protein expression in wild-type (WT) and shRNA knockdown (KD) HeLa cells was detected using Western blotting. β -Tubulin served as a loading control. The blots were incubated with primary antibodies against CSDE1 and β -Tubulin, respectively, followed by incubating with HRP-conjugated goat anti-rabbit secondary antibody. Images were

SUPPORT

SUPPORT@GENUINBIOTECH.COM
TEL: +1-540-855-7041

ORDERS

SALES@GENUINBIOTECH.COM
FAX: +1-540-855-7041

WWW.GENUINBIOTECH.COM

Human CSDE1 Knockdown Cell Line (WB-Validated)

PAGE 3

developed using FeQ™ ECL Substrate Kit.

SUPPORT

SUPPORT@GENUINBIOTECH.COM
TEL: +1-540-855-7041

ORDERS

SALES@GENUINBIOTECH.COM
FAX:+1-540-855-7041

WWW.GENUINBIOTECH.COM