

# Human CDC73 Knockdown Cell Line (WB-Validated)



**Catalog #: C61414**

## Aliases

CDC73; Cell Division Cycle 73; Parafibromin; HRPT2; FIHP; Paf1/RNA Polymerase II Complex Component; Cell Division Cycle Protein 73 Homolog; Familial Isolated Hyperparathyroidism; Hyperparathyroidism 2 Protein; C1orf28; HRPT1; Cell Division Cycle 73, Paf1/RNA Polymerase II Complex Component, Homolog (S. Cerevisiae); Cell Division Cycle 73 Paf1/RNA Polymerase II Complex Component-Like Protein; Cell Division Cycle 73, Paf1/RNA Polymerase II Complex Component, Homolog; Hyperparathyroidism 2 (With Jaw Tumor); Chromosome 1 Open Reading Frame 28; Hyperparathyroidism 1; PARAFIBROMIN; C1ORF28; HPTJT; HYX

## Background

Gene Name: CDC73

NCBI Gene Entry: [79577](#)

## Storage

Store at liquid nitrogen for 1 year.

## Kit Components

1. Human CDC73 Knockdown Cell Line (Wb-Validated)
2. Wild-type cell line

## Parental Cell Line

Human cell line supplied by the client

## Validation Methods

RT-qPCR, Western blotting (WB)

## Shipping

Shipped on Dry Ice.

## Instructions For Use

This knockdown cell line should be paired with wild-type cell line for use.

**Note:** This product is for research use only.

## Validation Data

---

### SUPPORT

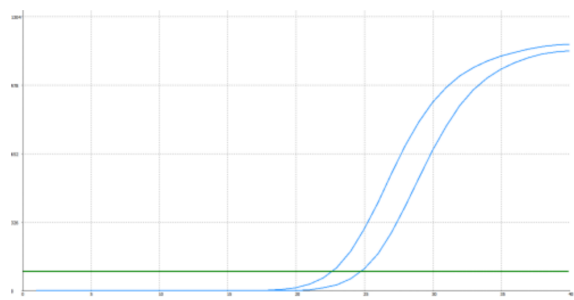
SUPPORT@GENUINBIOTECH.COM  
TEL: +1-540-855-7041

### ORDERS

SALES@GENUINBIOTECH.COM  
FAX: +1-540-855-7041

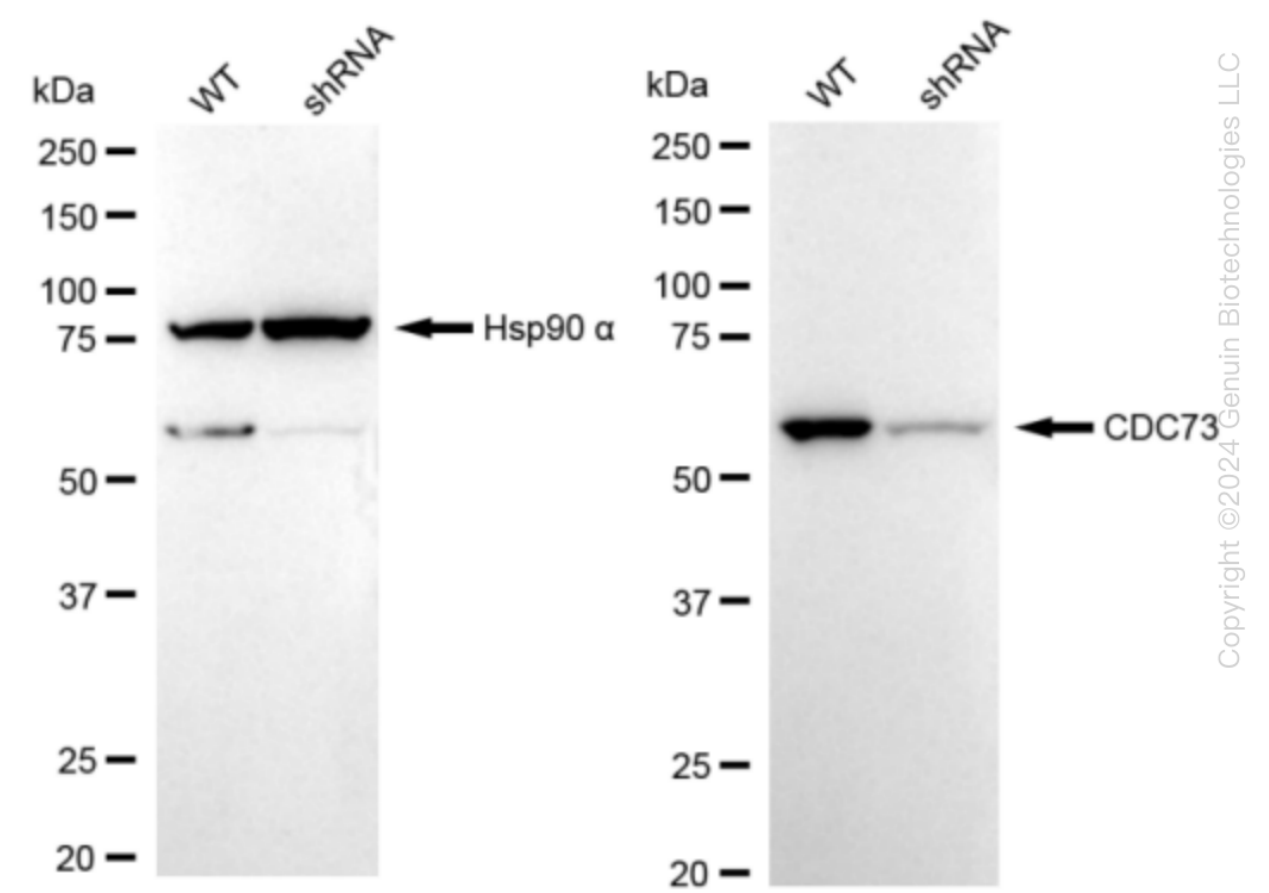
[WWW.GENUINBIOTECH.COM](http://WWW.GENUINBIOTECH.COM)

Human CDC73 Knockdown Cell Line (WB-Validated)



Genotype	Ct Value
Wild-Type	22.46
Knock-Down	24.53
$\Delta Ct (Ct_{KD}-Ct_{WT})$	2.07
% mRNA Reduction	↓ 76%

RT-qPCR analysis. HeLa cells were infected with CDC73-specific shRNA lentiviral particles, total RNA was extracted from wild-type and knockdown cells, RT-qPCR was performed using gene-specific primers.  $\Delta Ct (Ct_{KD}-Ct_{WT})$  was used to calculate mRNA reduction (%) between wild-type and knockdown cells using the following formula:  $(1-1/2^{\Delta Ct}) \times 100\%$ .



Western blotting analysis. CDC73 protein expression in wild-type (WT) and shRNA knockdown (KD) HeLa cells was detected using Western blotting. Hsp90  $\alpha$  served as a loading control. The blots were incubated with primary antibodies (Cat#61414, 1:5,000) against CDC73 and Hsp90  $\alpha$ , respectively, followed by incubating with HRP-conjugated goat anti-rabbit secondary antibody

## **Human CDC73 Knockdown Cell Line (WB-Validated)**

PAGE 3

(Cat#201, 1:20,000). Images were developed using FeQ™ ECL Substrate Kit (Cat#226).

---

### **SUPPORT**

SUPPORT@GENUINBIOTECH.COM  
TEL: +1-540-855-7041

### **ORDERS**

SALES@GENUINBIOTECH.COM  
FAX:+1-540-855-7041

**WWW.GENUINBIOTECH.COM**