

Human CSE1L Knockdown Cell Line (WB-Validated)



Catalog #: C61416

Aliases

CSE1L; Chromosome Segregation 1 Like; XPO2; CAS; CSE1; Cellular Apoptosis Susceptibility Protein; Chromosome Segregation 1-Like Protein; Importin-Alpha Re-Exporter; Exportin-2; Exp2; Chromosome Segregation 1 (Yeast Homolog)-Like; CSE1 Chromosome Segregation 1-Like (Yeast); Epididymis Secretory Sperm Binding Protein; CSE1 Chromosome Segregation 1 Like; CSE1 Chromosome Segregation 1-Like; Cellular Apoptosis Susceptibility

Background

Gene Name: CSE1L

NCBI Gene Entry: [1434](#)

Storage

Store at liquid nitrogen for 1 year.

Kit Components

1. Human CSE1L Knockdown Cell Line (Wb-Validated)
2. Wild-type cell line

Parental Cell Line

Human cell line supplied by the client

Validation Methods

RT-qPCR, Western blotting (WB)

Shipping

Shipped on Dry Ice.

Instructions For Use

This knockdown cell line should be paired with wild-type cell line for use.

Note: This product is for research use only.

Validation Data

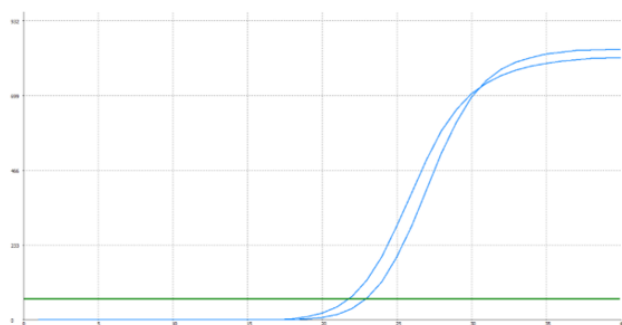
SUPPORT

SUPPORT@GENUINBIOTECH.COM
TEL: +1-540-855-7041

ORDERS

SALES@GENUINBIOTECH.COM
FAX: +1-540-855-7041

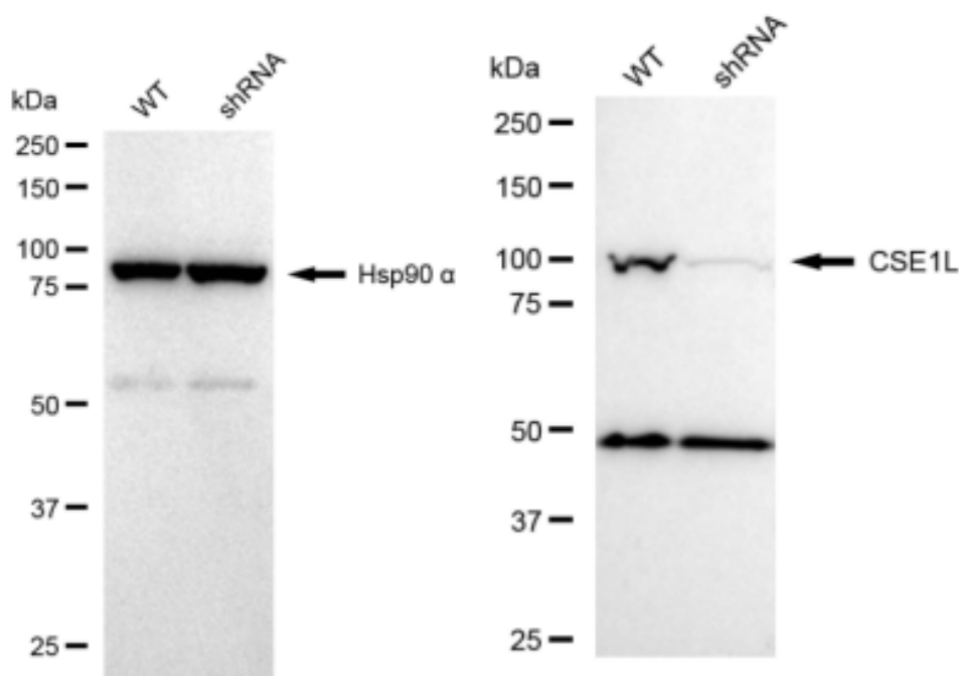
WWW.GENUINBIOTECH.COM



Genotype	Ct Value
Wild-Type	21.55
Knock-Down	22.76
$\Delta Ct (Ct_{KD} - Ct_{WT})$	1.21
% mRNA Reduction	↓ 57%

Copyright ©2025 Genuin Biotechnologies LLC

RT-qPCR analysis. HeLa cells were infected with CSE1L-specific shRNA lentiviral particles, total RNA was extracted from wild-type and knockdown cells, RT-qPCR was performed using gene-specific primers. $\Delta Ct (Ct_{KD} - Ct_{WT})$ was used to calculate mRNA reduction (%) between wild-type and knockdown cells using the following formula: $(1 - 1/2^{\Delta Ct}) \times 100\%$.



Copyright ©2024 Genuin Biotechnologies LLC

Western blotting analysis. CSE1L protein expression in wild-type (WT) and shRNA knockdown (KD) HeLa cells was detected using Western blotting. Hsp90 α served as a loading control. The blots were incubated with primary antibodies against CSE1L and Hsp90 α , respectively, followed by incubating with HRP-conjugated goat anti-rabbit secondary antibody. Images were developed using FeQ™ ECL Substrate Kit.