

Human HMBS Knockdown Cell Line (WB-Validated)



Catalog #: C61422

Aliases

HMBS; Hydroxymethylbilane Synthase; Porphobilinogen Deaminase; PBGD; UPS; Porphyrin, Acute; Chester Type; Pre-Uroporphyrinogen Synthase; Uroporphyrinogen I Synthase; EC 2.5.1.61; PBG-D; PORC; Uroporphyrinogen I Synthetase

Background

Gene Name: HMBS

NCBI Gene Entry: [3145](#)

Storage

Store at liquid nitrogen for 1 year.

Kit Components

1. Human HMBS Knockdown Cell Line (Wb-Validated)
2. Wild-type cell line

Parental Cell Line

Human cell line supplied by the client

Validation Methods

RT-qPCR, Western blotting (WB)

Shipping

Shipped on Dry Ice.

Instructions For Use

This knockdown cell line should be paired with wild-type cell line for use.

Note: This product is for research use only.

Validation Data

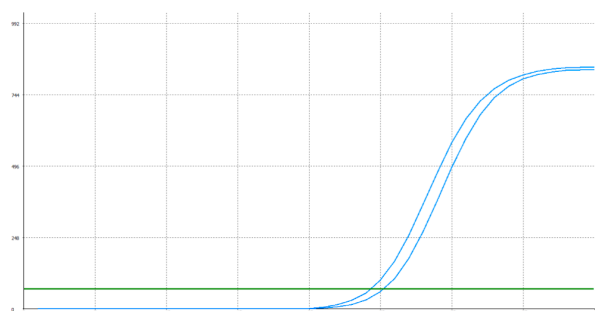
SUPPORT

SUPPORT@GENUINBIOTECH.COM
TEL: +1-540-855-7041

ORDERS

SALES@GENUINBIOTECH.COM
FAX: +1-540-855-7041

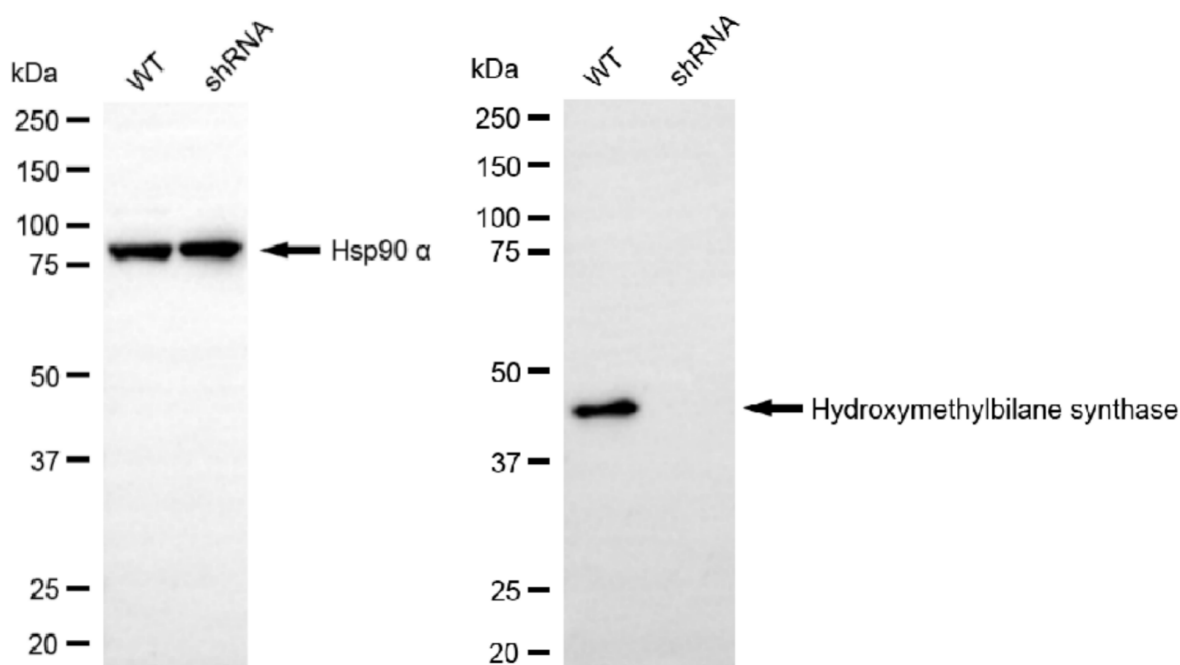
WWW.GENUINBIOTECH.COM



Genotype	Ct Value
Wild-Type	24.09
Knock-Down	24.99
$\Delta Ct (Ct_{KD} - Ct_{WT})$	0.90
% mRNA Reduction	↓ 46%

Copyright ©2025 Genuin Biotechnologies LLC

RT-qPCR analysis. HT-1080 cells were infected with HMBS-specific shRNA lentiviral particles, total RNA was extracted from wild-type and knockdown cells, RT-qPCR was performed using gene-specific primers. $\Delta Ct (Ct_{KD} - Ct_{WT})$ was used to calculate mRNA reduction (%) between wild-type and knockdown cells using the following formula: $(1 - 1/2^{\Delta Ct}) \times 100\%$.



Copyright ©2025 Genuin Biotechnologies LLC

Western blotting analysis. HMBS protein expression in wild-type (WT) and shRNA knockdown (KD) HT-1080 cells was detected using Western blotting. Hsp90 α served as a loading control. The blots were incubated with primary antibodies against HMBS and Hsp90 α , respectively, followed by incubating with HRP-conjugated goat anti-rabbit secondary antibody. Images were developed using NaQ™ ECL Substrate Kit.