

Human ANP32B Knockdown Cell Line (WB-Validated)



Catalog #: C61425

Aliases

ANP32B; Acidic Nuclear Phosphoprotein 32 Family Member B; PHAPI2; APRIL; Acidic Protein Rich In Leucines; SSP29; Acidic (Leucine-Rich) Nuclear Phosphoprotein 32 Family, Member B; Acidic Leucine-Rich Nuclear Phosphoprotein 32 Family Member B; Putative HLA-DR-Associated Protein I-2; Silver-Stainable Protein SSP29

Background

Gene Name: ANP32B

NCBI Gene Entry: [10541](#)

Storage

Store at liquid nitrogen for 1 year.

Kit Components

1. Human ANP32B Knockdown Cell Line (Wb-Validated)
2. Wild-type cell line

Parental Cell Line

Human cell line supplied by the client

Validation Methods

RT-qPCR, Western blotting (WB)

Shipping

Shipped on Dry Ice.

Instructions For Use

This knockdown cell line should be paired with wild-type cell line for use.

Note: This product is for research use only.

Validation Data

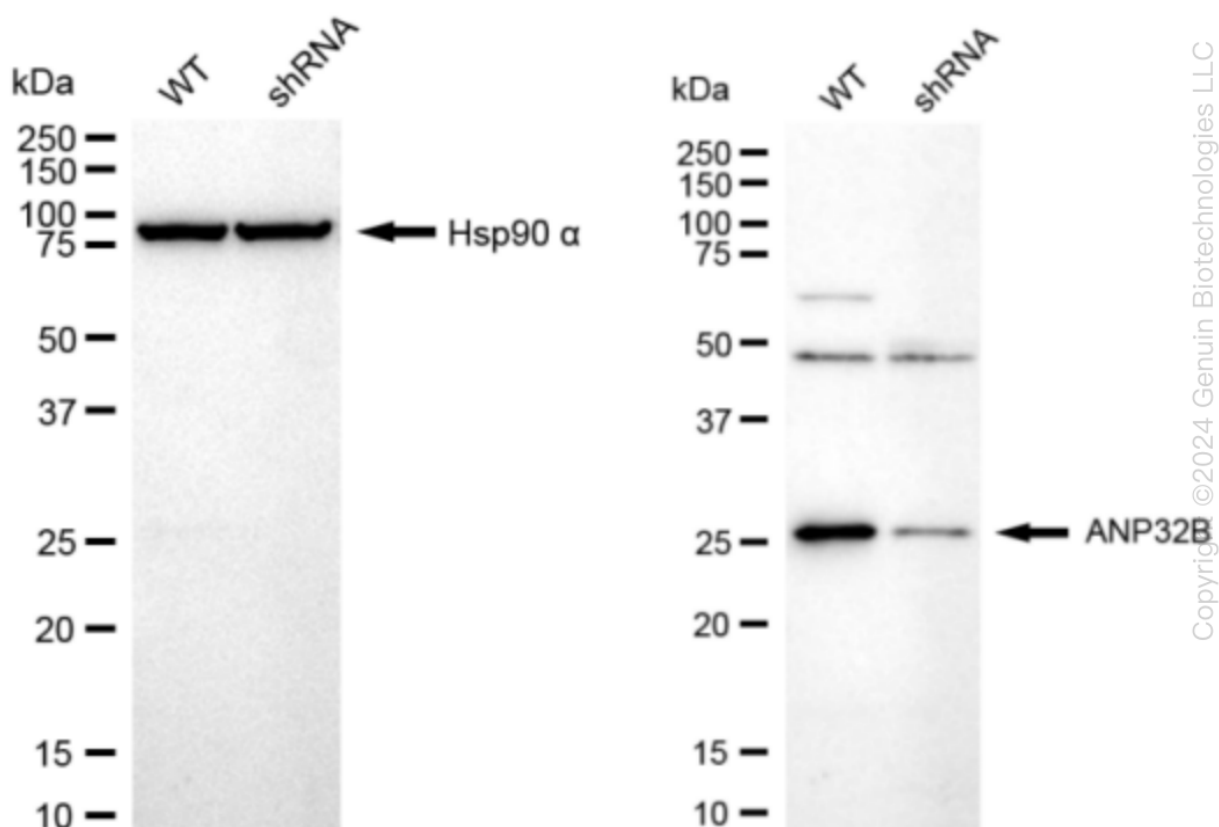
SUPPORT

SUPPORT@GENUINBIOTECH.COM
TEL: +1-540-855-7041

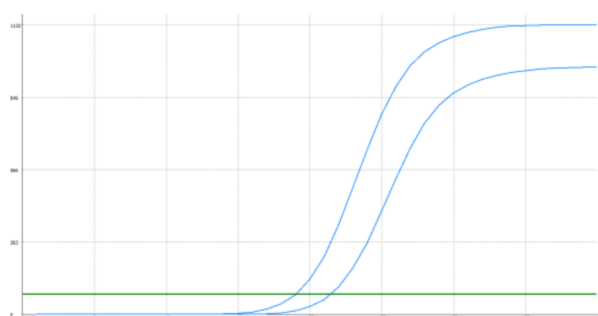
ORDERS

SALES@GENUINBIOTECH.COM
FAX: +1-540-855-7041

WWW.GENUINBIOTECH.COM



Western blotting analysis. ANP32B protein expression in wild-type (WT) and shRNA knockdown (KD) HeLa cells was detected using Western blotting. Hsp90 α served as a loading control. The blots were incubated with primary antibodies (Cat#61425, 1:5,000) against ANP32B and Hsp90 α , respectively, followed by incubating with HRP-conjugated goat anti-rabbit secondary antibody (Cat#201, 1:20,000). Images were developed using FeQ™ ECL Substrate Kit (Cat#226).



Genotype	Ct Value
Wild-Type	19.07
Knock-Down	21.21
$\Delta Ct (Ct_{KD} - Ct_{WT})$	2.14
% mRNA Reduction	↓ 77%

RT-qPCR analysis. HeLa cells were infected with ANP32B-specific shRNA lentiviral particles, total RNA was extracted from wild-type and knockdown cells, RT-qPCR was performed using gene-specific primers. $\Delta Ct (Ct_{KD} - Ct_{WT})$ was used to calculate mRNA reduction (%) between

Human ANP32B Knockdown Cell Line (WB-Validated)

PAGE 3

wild-type and knockdown cells using the following formula: $(1 - 1/2^{\Delta Ct}) \times 100\%$.

SUPPORT

SUPPORT@GENUINBIOTECH.COM
TEL: +1-540-855-7041

ORDERS

SALES@GENUINBIOTECH.COM
FAX: +1-540-855-7041

WWW.GENUINBIOTECH.COM