

Human ALPI Knockdown Cell Line (WB-Validated)



Catalog #: C61426

Aliases

ALPI; Alkaline Phosphatase, Intestinal; IAP; Intestinal Alkaline Phosphatase; Intestinal-Type Alkaline Phosphatase; EC 3.1.3.1; Alkaline Phosphomonoesterase; Glycerophosphatase; Kasahara Isozyme

Background

Gene Name: ALPI
NCBI Gene Entry: 248

Storage

Store at liquid nitrogen for 1 year.

Kit Components

1. Human ALPI Knockdown Cell Line (Wb-Validated)
2. Wild-type cell line

Parental Cell Line

Human cell line supplied by the client

Validation Methods

RT-qPCR, Western blotting (WB)

Shipping

Shipped on Dry Ice.

Instructions For Use

This knockdown cell line should be paired with wild-type cell line for use.

Note: This product is for research use only.

Validation Data

SUPPORT

SUPPORT@GENUINBIOTECH.COM
TEL: +1-540-855-7041

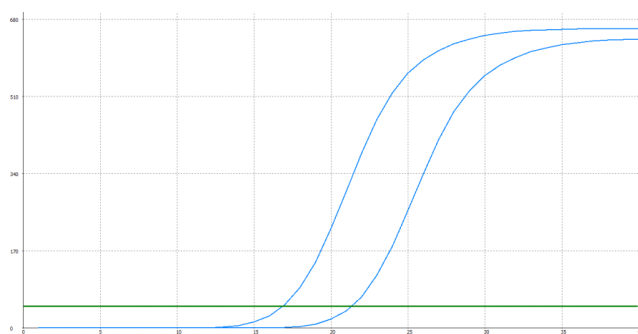
ORDERS

SALES@GENUINBIOTECH.COM
FAX: +1-540-855-7041

WWW.GENUINBIOTECH.COM

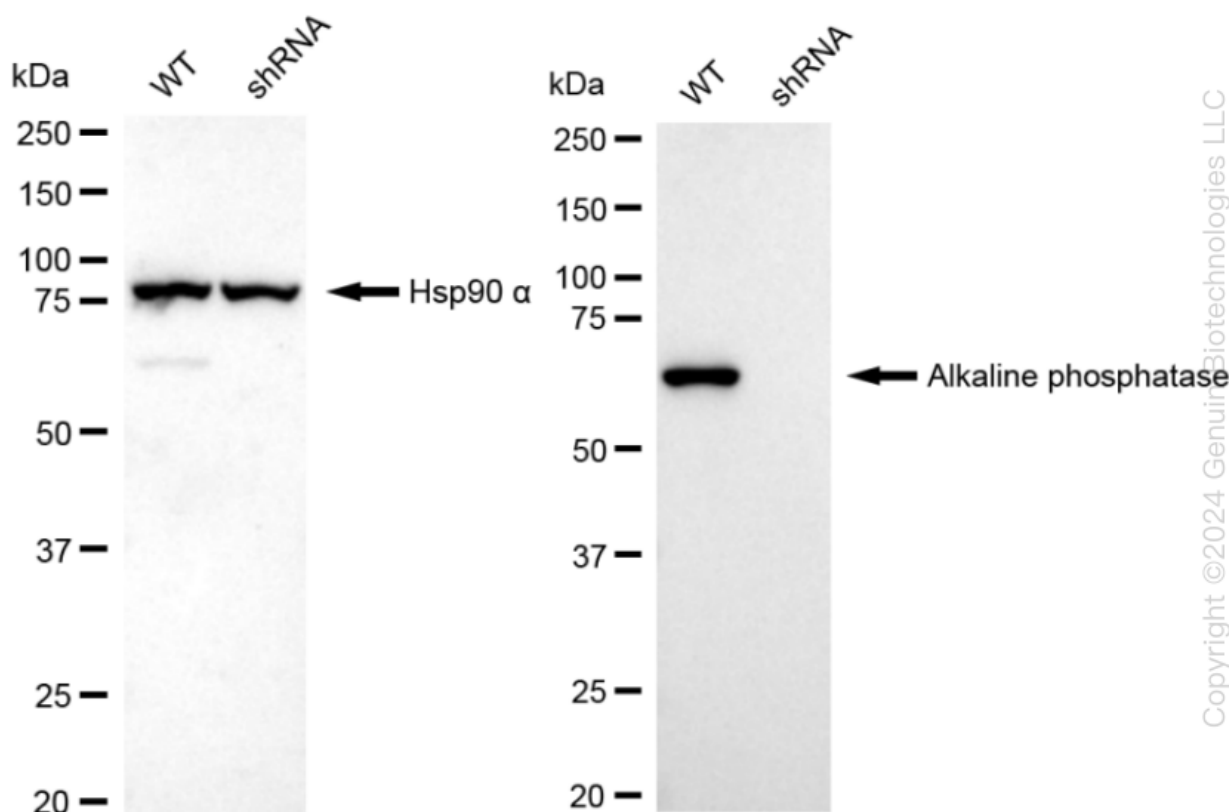
Human ALPI Knockdown Cell Line (WB-Validated)

PAGE 2



Genotype	Ct Value
Wild-Type	16.84
Knock-Down	21.24
$\Delta Ct (Ct_{KD} - Ct_{WT})$	4.40
% mRNA Reduction	↓ 95%

RT-qPCR analysis. HeLa cells were infected with ALPI-specific shRNA lentiviral particles, total RNA was extracted from wild-type and knockdown cells, RT-qPCR was performed using gene-specific primers. $\Delta Ct (Ct_{KD} - Ct_{WT})$ was used to calculate mRNA reduction (%) between wild-type and knockdown cells using the following formula: $(1 - 1/2^{\Delta Ct}) \times 100\%$.



Western blotting analysis. ALPI protein expression in wild-type (WT) and shRNA knockdown (KD) HeLa cells was detected using Western blotting. Hsp90 α served as a loading control. The blots were incubated with primary antibodies against ALPI and Hsp90 α , respectively, followed by incubating with HRP-conjugated goat anti-rabbit secondary antibody. Images were developed using FeQ™ ECL Substrate Kit.

SUPPORT

SUPPORT@GENUINBIOTECH.COM
TEL: +1-540-855-7041

ORDERS

SALES@GENUINBIOTECH.COM
FAX: +1-540-855-7041

WWW.GENUINBIOTECH.COM