

Human ARHGEF2 Knockdown Cell Line (WB-Validated)



Catalog #: C61432

Aliases

ARHGEF2; Rho/Rac Guanine Nucleotide Exchange Factor 2; GEF-H1; LFP40; Rho/Rac Guanine Nucleotide Exchange Factor (GEF); KIAA0651; GEFH1; P40; Rho Guanine Nucleotide Exchange Factor; ProlifeRating Cell Nucleolar Antigen P40; Guanine Nucleotide Exchange Factor H1; Microtubule-Regulated Rho-GEF; Lfc; NEDMHM; GEF; LFC

Background

Gene Name: ARHGEF2

NCBI Gene Entry: [9181](#)

Storage

Store at liquid nitrogen for 1 year.

Kit Components

1. Human ARHGEF2 Knockdown Cell Line (Wb-Validated)
2. Wild-type cell line

Parental Cell Line

Human cell line supplied by the client

Validation Methods

RT-qPCR, Western blotting (WB)

Shipping

Shipped on Dry Ice.

Instructions For Use

This knockdown cell line should be paired with wild-type cell line for use.

Note: This product is for research use only.

Validation Data

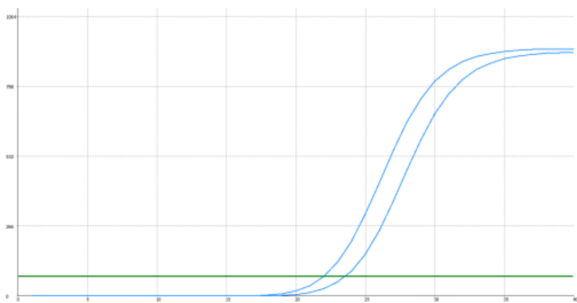
SUPPORT

SUPPORT@GENUINBIOTECH.COM
TEL: +1-540-855-7041

ORDERS

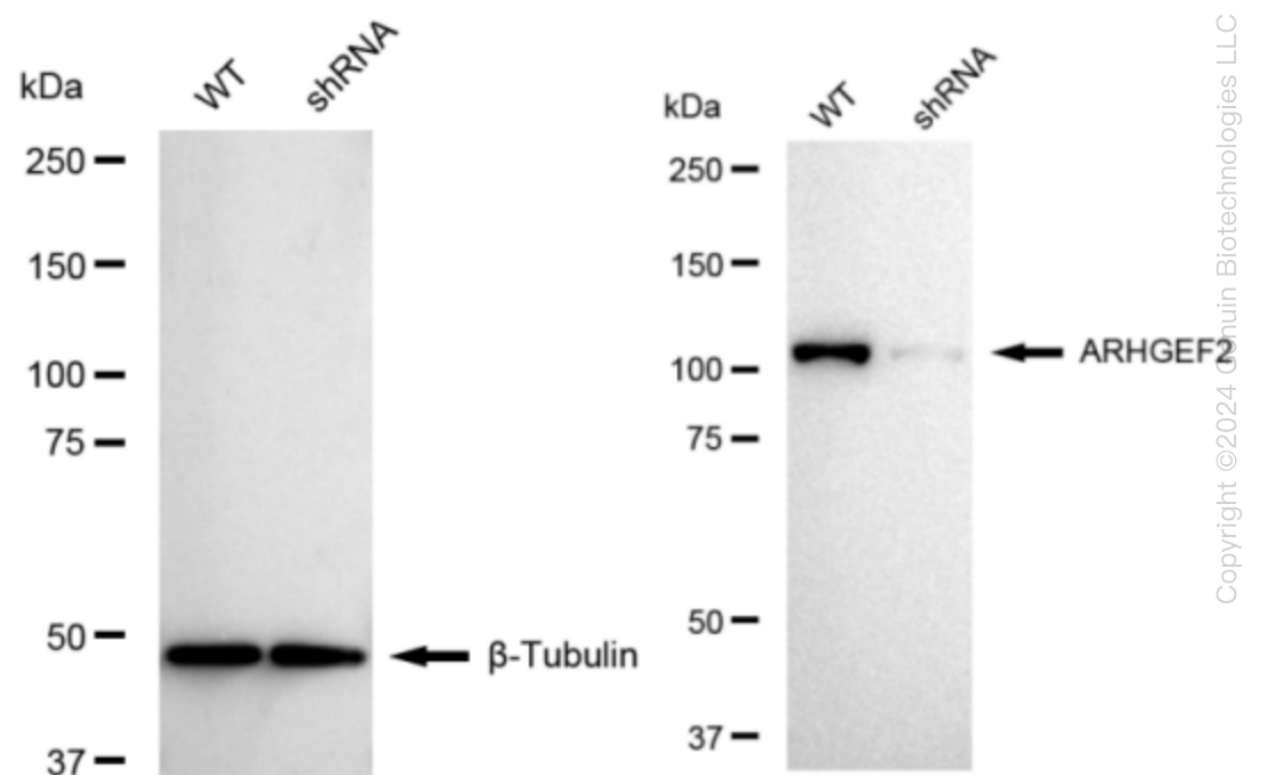
SALES@GENUINBIOTECH.COM
FAX: +1-540-855-7041

WWW.GENUINBIOTECH.COM



Genotype	Ct Value
Wild-Type	25.98
Knock-Down	27.10
ΔCt ($Ct_{KD}-Ct_{WT}$)	1.12
% mRNA Reduction	↓ 54%

RT-qPCR analysis. HeLa cells were infected with ARHGEF2-specific shRNA lentiviral particles, total RNA was extracted from wild-type and knockdown cells, RT-qPCR was performed using gene-specific primers. ΔCt ($Ct_{KD}-Ct_{WT}$) was used to calculate mRNA reduction (%) between wild-type and knockdown cells using the following formula: $(1-1/2^{\Delta Ct}) \times 100\%$.



Western blotting analysis. ARHGEF2 protein expression in wild-type (WT) and shRNA knockdown (KD) HeLa cells was detected using Western blotting. β -Tubulin served as a loading control. The blots were incubated with primary antibodies (Cat#61432, 1:5,000) against ARHGEF2 and β -Tubulin, respectively, followed by incubating with HRP-conjugated goat anti-rabbit secondary antibody (Cat#201, 1:20,000). Images were developed using FeQ™ ECL Substrate Kit (Cat#226).

