

Human CSNK2B Knockdown Cell Line (WB-Validated)



Catalog #: C61434

Aliases

CSNK2B; Casein Kinase 2 Beta; Casein Kinase 2, Beta Polypeptide; Casein Kinase II Subunit Beta; Protein G5a; CK II Beta; Phosvitin; Ckb1; Ckb2; CK2N; G5A; Alternative Name: G5a, Phosvitin; Casein Kinase II Beta Subunit; CSNK2B-LY6G5B-1072; CSNK2B-LY6G5B-1103; CSNK2B-LY6G5B-532; CSNK2B-LY6G5B-560; CSNK2B-LY6G5B-562; POBINDS; CSK2B; CK2B(□CKB1; CKB2□

Background

Gene Name: CSNK2B
NCBI Gene Entry: [1460](#)

Storage

Store at liquid nitrogen for 1 year.

Kit Components

1. Human CSNK2B Knockdown Cell Line (Wb-Validated)
2. Wild-type cell line

Parental Cell Line

Human cell line supplied by the client

Validation Methods

RT-qPCR, Western blotting (WB)

Shipping

Shipped on Dry Ice.

Instructions For Use

This knockdown cell line should be paired with wild-type cell line for use.

Note: This product is for research use only.

Validation Data

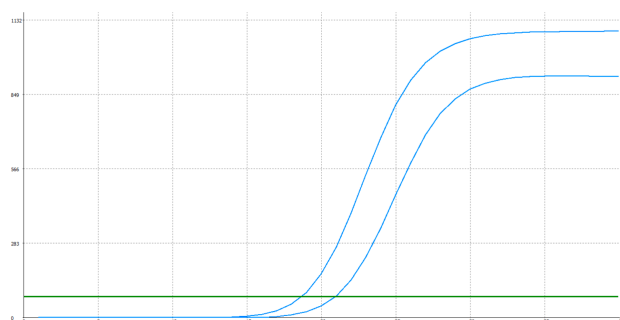
SUPPORT

SUPPORT@GENUINBIOTECH.COM
TEL: +1-540-855-7041

ORDERS

SALES@GENUINBIOTECH.COM
FAX: +1-540-855-7041

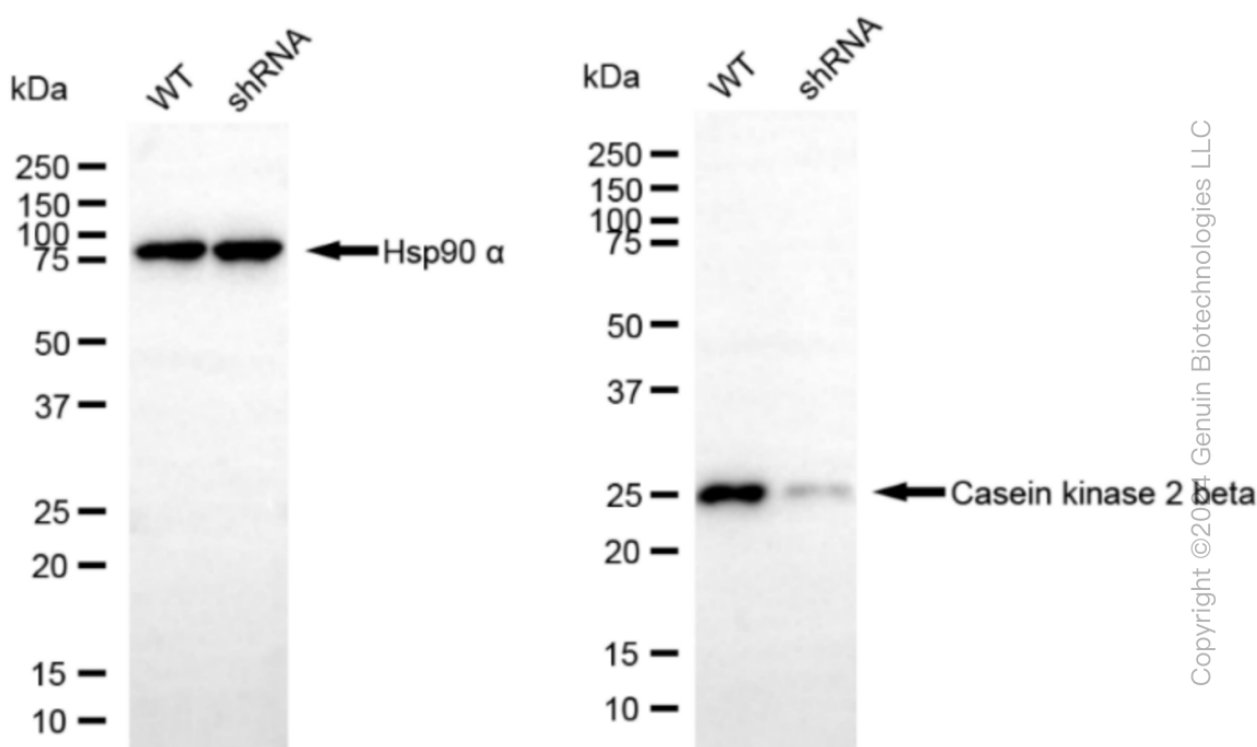
WWW.GENUINBIOTECH.COM



Genotype	Ct Value
Wild-Type	18.58
Knock-Down	20.56
$\Delta Ct (Ct_{KD} - Ct_{WT})$	1.98
% mRNA Reduction	↓ 75%

Copyright ©2025 Genuin Biotechnologies LLC

RT-qPCR analysis. HeLa cells were infected with CSNK2B-specific shRNA lentiviral particles, total RNA was extracted from wild-type and knockdown cells, RT-qPCR was performed using gene-specific primers. $\Delta Ct (Ct_{KD} - Ct_{WT})$ was used to calculate mRNA reduction (%) between wild-type and knockdown cells using the following formula: $(1 - 1/2^{\Delta Ct}) \times 100\%$.



Copyright ©2025 Genuin Biotechnologies LLC

Western blotting analysis. CSNK2B protein expression in wild-type (WT) and shRNA knockdown (KD) HeLa cells was detected using Western blotting. Hsp90 α served as a loading control. The blots were incubated with primary antibodies against CSNK2B and Hsp90 α , respectively, followed by incubating with HRP-conjugated goat anti-rabbit secondary antibody. Images were developed using FeQ™ ECL Substrate Kit.