

Human APBB1 Knockdown Cell Line (WB-Validated)



Catalog #: C61435

Aliases

APBB1; Amyloid Beta Precursor Protein Binding Family B Member 1; FE65; RIR; Amyloid Beta (A4) Precursor Protein-Binding, Family B, Member 1 (Fe65); Amyloid-Beta A4 Precursor Protein-Binding Family B Member 1; Adaptor Protein FE65a2; Stat-Like Protein; Protein Fe65; MGC:9072; Fe65

Background

Gene Name: APBB1
NCBI Gene Entry: [322](#)

Storage

Store at liquid nitrogen for 1 year.

Kit Components

1. Human APBB1 Knockdown Cell Line (Wb-Validated)
2. Wild-type cell line

Parental Cell Line

Human cell line supplied by the client

Validation Methods

RT-qPCR, Western blotting (WB)

Shipping

Shipped on Dry Ice.

Instructions For Use

This knockdown cell line should be paired with wild-type cell line for use.

Note: This product is for research use only.

Validation Data

SUPPORT

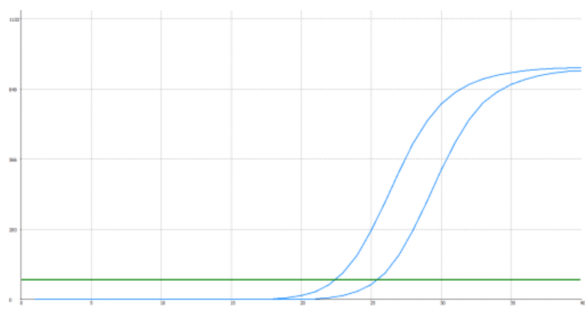
SUPPORT@GENUINBIOTECH.COM
TEL: +1-540-855-7041

ORDERS

SALES@GENUINBIOTECH.COM
FAX: +1-540-855-7041

WWW.GENUINBIOTECH.COM

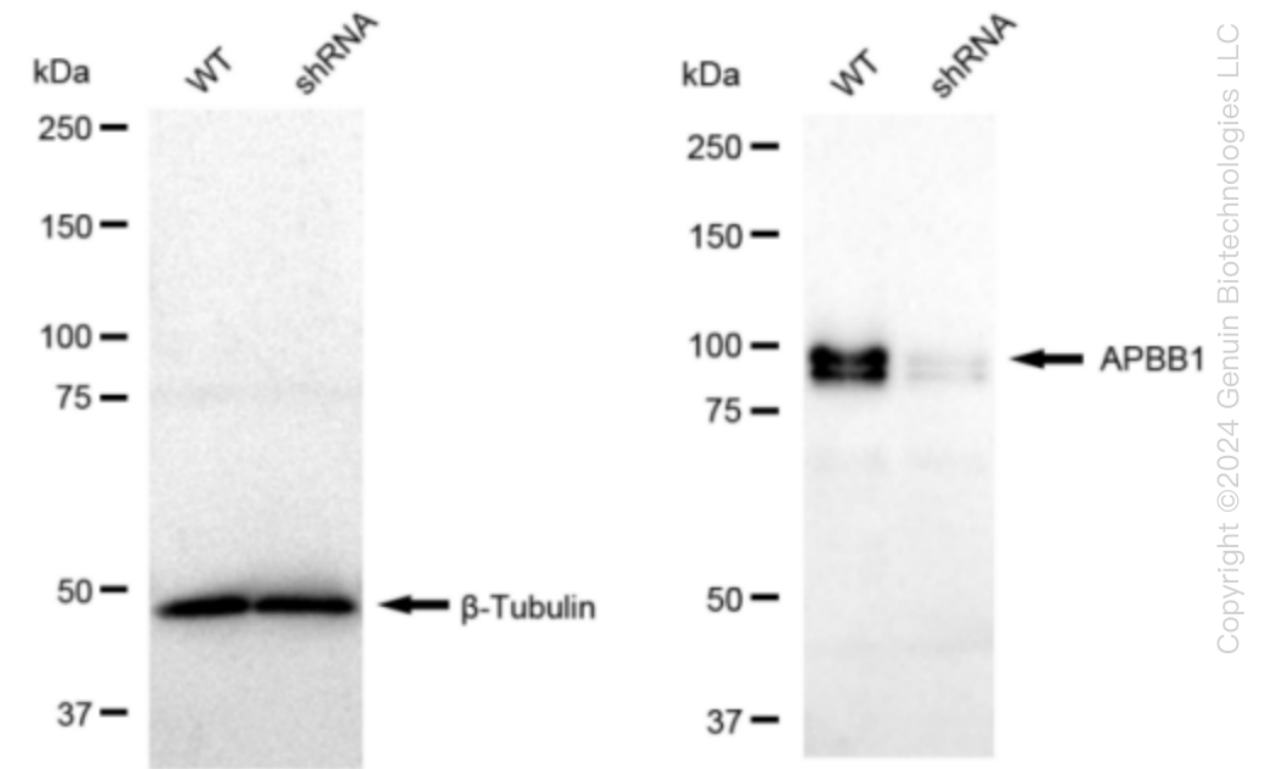
Human APBB1 Knockdown Cell Line (WB-Validated)



Genotype	Ct Value
Wild-Type	22.15
Knock-Down	25.12
$\Delta Ct (Ct_{KD}-Ct_{WT})$	2.97
% mRNA Reduction	↓ 87%

Copyright ©2024 Genuin Biotechnologies LLC

RT-qPCR analysis. HeLa cells were infected with APBB1-specific shRNA lentiviral particles, total RNA was extracted from wild-type and knockdown cells, RT-qPCR was performed using gene-specific primers. $\Delta Ct (Ct_{KD}-Ct_{WT})$ was used to calculate mRNA reduction (%) between wild-type and knockdown cells using the following formula: $(1-1/2^{\Delta Ct}) \times 100\%$.



Copyright ©2024 Genuin Biotechnologies LLC

Western blotting analysis. APBB1 protein expression in wild-type (WT) and shRNA knockdown (KD) HeLa cells was detected using Western blotting. β -Tubulin served as a loading control. The blots were incubated with primary antibodies (Cat#61435, 1:5,000) against APBB1 and β -Tubulin, respectively, followed by incubating with HRP-conjugated goat anti-rabbit secondary antibody (Cat#201, 1:20,000). Images were developed using FeQ™ ECL Substrate Kit (Cat#226).

SUPPORT

SUPPORT@GENUINBIOTECH.COM
TEL: +1-540-855-7041

ORDERS

SALES@GENUINBIOTECH.COM
FAX: +1-540-855-7041

WWW.GENUINBIOTECH.COM