

Human BCAP31 Knockdown Cell Line (WB-Validated)



Catalog #: C61436

Aliases

BCAP31; B Cell Receptor Associated Protein 31; DXS1357E; BAP31; CDM; B-Cell Receptor-Associated Protein 31; 6C6-AG Tumor-Associated Antigen; 6C6-AG; BCR-Associated Protein Bap31; BCR-Associated Protein 31; MICRODELXq28; Protein CDM; P28 Bap31; DELXQ28; 6C6-Ag; Bap31; DDCH; P28

Background

Gene Name: BCAP31

NCBI Gene Entry: [10134](#)

Storage

Store at liquid nitrogen for 1 year.

Kit Components

1. Human BCAP31 Knockdown Cell Line (Wb-Validated)
2. Wild-type cell line

Parental Cell Line

Human cell line supplied by the client

Validation Methods

RT-qPCR, Western blotting (WB)

Shipping

Shipped on Dry Ice.

Instructions For Use

This knockdown cell line should be paired with wild-type cell line for use.

Note: This product is for research use only.

Validation Data

SUPPORT

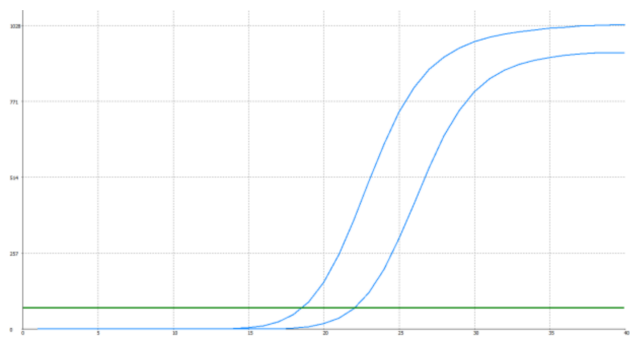
SUPPORT@GENUINBIOTECH.COM
TEL: +1-540-855-7041

ORDERS

SALES@GENUINBIOTECH.COM
FAX: +1-540-855-7041

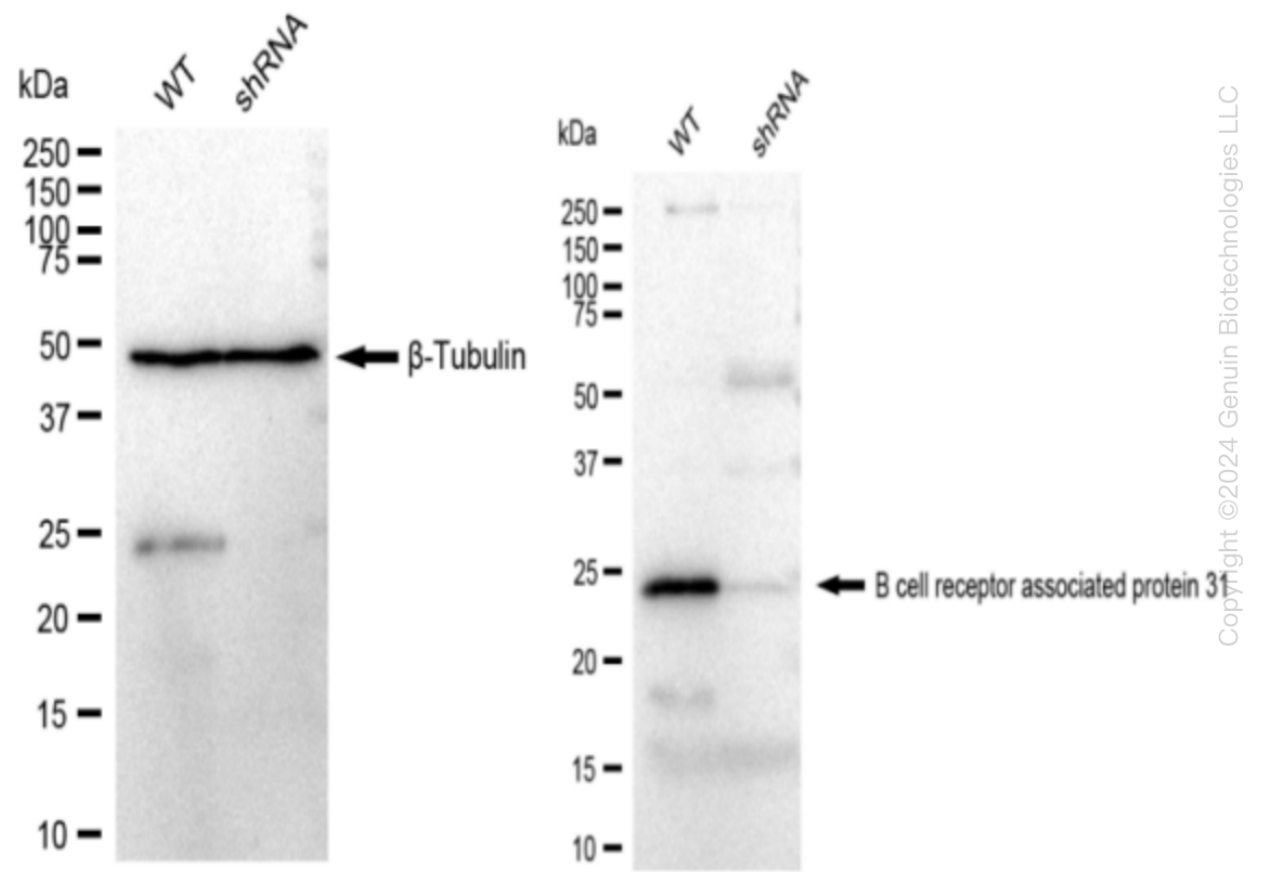
WWW.GENUINBIOTECH.COM

Human BCAP31 Knockdown Cell Line (WB-Validated)



Genotype	Ct Value
Wild-Type	18.56
Knock-Down	21.9
$\Delta Ct (Ct_{KD}-Ct_{WT})$	3.34
% mRNA Reduction	↓ 90%

RT-qPCR analysis. HeLa cells were infected with BCAP31-specific shRNA lentiviral particles, total RNA was extracted from wild-type and knockdown cells, RT-qPCR was performed using gene-specific primers. $\Delta Ct (Ct_{KD}-Ct_{WT})$ was used to calculate mRNA reduction (%) between wild-type and knockdown cells using the following formula: $(1-1/2^{\Delta Ct}) \times 100\%$.



Western blotting analysis. BCAP31 protein expression in wild-type (WT) and shRNA knockdown (KD) HeLa cells was detected using Western blotting. β -Tubulin served as a loading control. The blots were incubated with primary antibodies (Cat#61436, 1:5,000) against BCAP31 and β -

SUPPORT

SUPPORT@GENUINBIOTECH.COM
TEL: +1-540-855-7041

ORDERS

SALES@GENUINBIOTECH.COM
FAX: +1-540-855-7041

WWW.GENUINBIOTECH.COM

Tubulin , respectively, followed by incubating with HRP-conjugated goat anti-rabbit secondary antibody (Cat#201, 1:20,000). Images were developed using FeQ™ ECL Substrate Kit (Cat#226).