

Human CHAF1B Knockdown Cell Line (WB-Validated)



Catalog #: C61440

Aliases

CHAF1B; Chromatin Assembly Factor 1 Subunit B; MPHOSPH7; CAF1P60; CAF1A; MPP7; M-Phase Phosphoprotein 7; CAF-1; CAF1; Human Chromatin Assembly Factor-I P60 Subunit; Chromatin Assembly Factor I P60 Subunit; CAF-I 60 KDa Subunit; CAF-1 Subunit B; CAF-I P60; Chromatin Assembly Factor 1, Subunit B (P60); Chromatin Assembly Factor I, P60 Subunit; CAF-IP60

Background

Gene Name: CHAF1B
NCBI Gene Entry: [8208](#)

Storage

Store at liquid nitrogen for 1 year.

Kit Components

1. Human CHAF1B Knockdown Cell Line (Wb-Validated)
2. Wild-type cell line

Parental Cell Line

Human cell line supplied by the client

Validation Methods

RT-qPCR, Western blotting (WB)

Shipping

Shipped on Dry Ice.

Instructions For Use

This knockdown cell line should be paired with wild-type cell line for use.

Note: This product is for research use only.

Validation Data

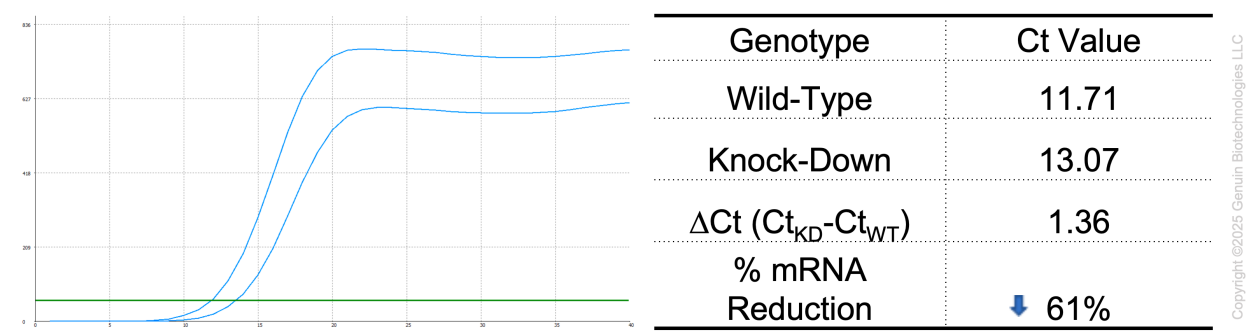
SUPPORT

SUPPORT@GENUINBIOTECH.COM
TEL: +1-540-855-7041

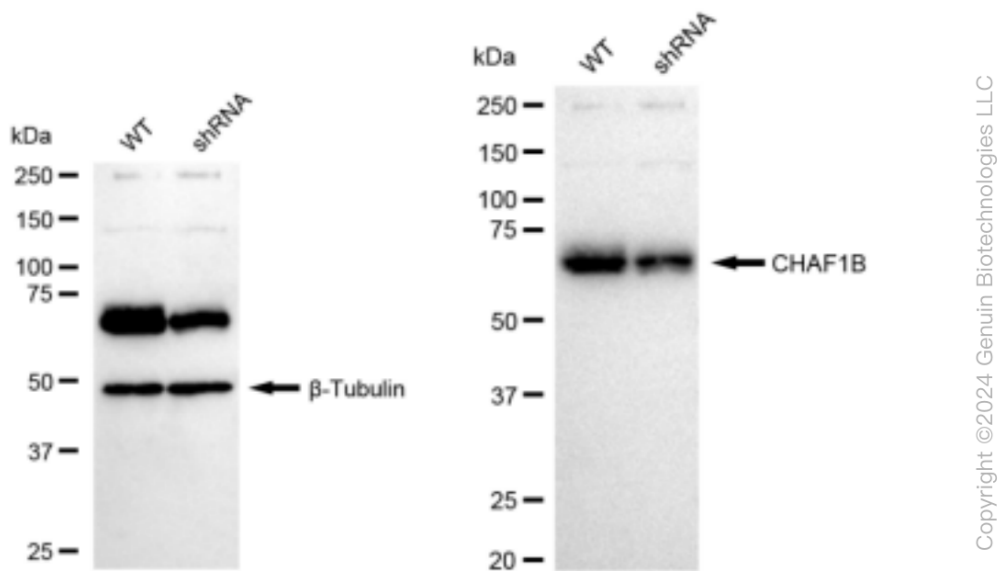
ORDERS

SALES@GENUINBIOTECH.COM
FAX: +1-540-855-7041

WWW.GENUINBIOTECH.COM



RT-qPCR analysis. HeLa cells were infected with CHAF1B-specific shRNA lentiviral particles, total RNA was extracted from wild-type and knockdown cells, RT-qPCR was performed using gene-specific primers. $\Delta Ct (Ct_{KD} - Ct_{WT})$ was used to calculate mRNA reduction (%) between wild-type and knockdown cells using the following formula: $(1 - 1/2^{\Delta Ct}) \times 100\%$.



Western blotting analysis. CHAF1B protein expression in wild-type (WT) and shRNA knockdown (KD) HeLa cells was detected using Western blotting. β -Tubulin served as a loading control. The blots were incubated with primary antibodies against CHAF1B and β -Tubulin, respectively, followed by incubating with HRP-conjugated goat anti-rabbit secondary antibody. Images were developed using FeQ™ ECL Substrate Kit.