

Human AP2S1 Knockdown Cell Line (WB-Validated)



Catalog #: C61452

Aliases

AP2S1; Adaptor Related Protein Complex 2 Subunit Sigma 1; CLAPS2; FBH3; Adaptor Related Protein Complex 2 Sigma 1 Subunit; Clathrin Assembly Protein 2 Sigma Small Chain; Plasma Membrane Adaptor AP-2 17 KDa Protein; Adaptor Protein Complex AP-2 Subunit Sigma; Clathrin Coat-Associated Protein AP17; Clathrin Coat Assembly Protein AP17; AP-2 Complex Subunit Sigma; HA2 17 KDa Subunit; Sigma2-Adaptin; Sigma-2; FBHOk; AP17; HHC3; Clathrin-Associated/Assembly/Adaptor Protein, Small 2 (17kD); Adaptor-Related Protein Complex 2 Subunit Sigma; Hypocalciuric Hypercalcemia 3 (Oklahoma Type); FBHOK

Background

Gene Name: AP2S1

NCBI Gene Entry: [1175](#)

Storage

Store at liquid nitrogen for 1 year.

Kit Components

1. Human AP2S1 Knockdown Cell Line (Wb-Validated)
2. Wild-type cell line

Parental Cell Line

Human cell line supplied by the client

Validation Methods

RT-qPCR, Western blotting (WB)

Shipping

Shipped on Dry Ice.

Instructions For Use

This knockdown cell line should be paired with wild-type cell line for use.

Note: This product is for research use only.

Validation Data

SUPPORT

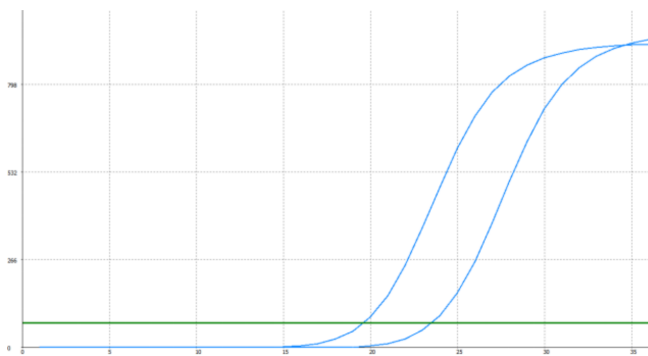
SUPPORT@GENUINBIOTECH.COM
TEL: +1-540-855-7041

ORDERS

SALES@GENUINBIOTECH.COM
FAX: +1-540-855-7041

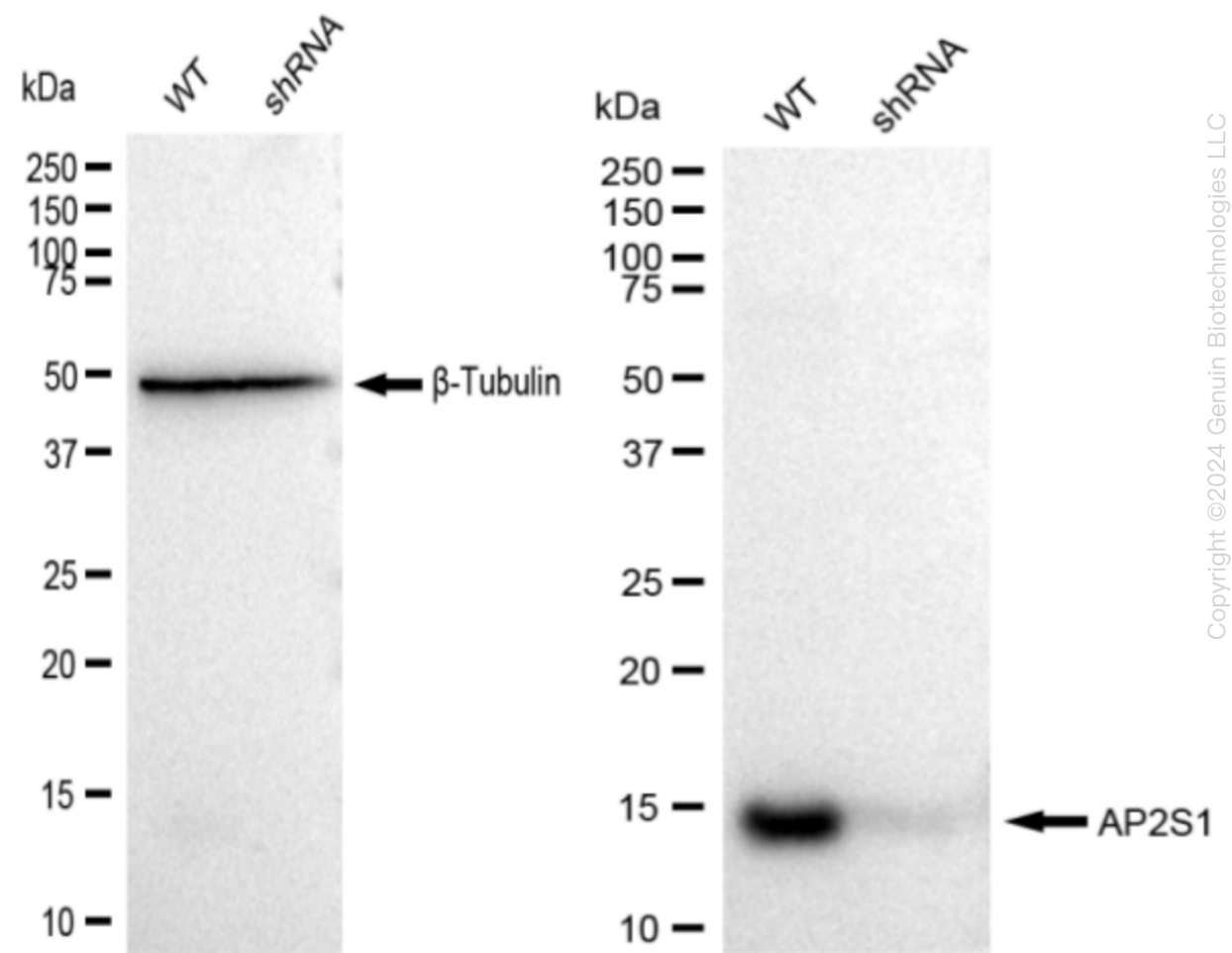
WWW.GENUINBIOTECH.COM

Human AP2S1 Knockdown Cell Line (WB-Validated)



Genotype	Ct Value
Wild-Type	19.37
Knock-Down	23.34
Δ Ct (Ct _{KD} -Ct _{WT})	3.97
% mRNA Reduction	↓ 94 %

RT-qPCR analysis. HeLa cells were infected with AP2S1-specific shRNA lentiviral particles, total RNA was extracted from wild-type and knockdown cells, RT-qPCR was performed using gene-specific primers. Δ Ct (Ct_{KD}-Ct_{WT}) was used to calculate mRNA reduction (%) between wild-type and knockdown cells using the following formula: $(1-1/2^{\Delta$ Ct) x 100%.



Western blotting analysis. AP2S1 protein expression in wild-type (WT) and shRNA knockdown

SUPPORT

SUPPORT@GENUINBIOTECH.COM
TEL: +1-540-855-7041

ORDERS

SALES@GENUINBIOTECH.COM
FAX: +1-540-855-7041

WWW.GENUINBIOTECH.COM

Human AP2S1 Knockdown Cell Line (WB-Validated)

PAGE 3

(KD) HeLa cells was detected using Western blotting. β -Tubulin α served as a loading control. The blots were incubated with primary antibodies (Cat#61329, 1:5,000) against AP2S1 and β -Tubulin , respectively, followed by incubating with HRP-conjugated goat anti-rabbit secondary antibody (Cat#201, 1:20,000). Images were developed using FeQ™ ECL Substrate Kit (Cat#226).

SUPPORT

SUPPORT@GENUINBIOTECH.COM
TEL: +1-540-855-7041

ORDERS

SALES@GENUINBIOTECH.COM
FAX:+1-540-855-7041

WWW.GENUINBIOTECH.COM