

# Human CAPNS1 Knockdown Cell Line (WB-Validated)



**Catalog #: C61453**

## Aliases

CAPNS1; Calpain Small Subunit 1; CDPS; CANPS; CAPN4; CANP; Calcium-Activated Neutral Proteinase Small Subunit; Calcium-Dependent Protease Small Subunit 1; Calpain Regulatory Subunit; CANP Small Subunit; CSS1; 30K; Epididymis Secretory Sperm Binding Protein; Calcium-Dependent Protease, Small Subunit; Calcium-Dependent Protease Small Subunit; Calpain 4, Small Subunit (30K); Calpain, Small Polypeptide; CALPAIN4; CAPNS

## Background

Gene Name: CAPNS1

NCBI Gene Entry: [826](#)

## Storage

Store at liquid nitrogen for 1 year.

## Kit Components

1. Human CAPNS1 Knockdown Cell Line (Wb-Validated)
2. Wild-type cell line

## Parental Cell Line

Human cell line supplied by the client

## Validation Methods

RT-qPCR, Western blotting (WB)

## Shipping

Shipped on Dry Ice.

## Instructions For Use

This knockdown cell line should be paired with wild-type cell line for use.

**Note:** This product is for research use only.

## Validation Data

---

### SUPPORT

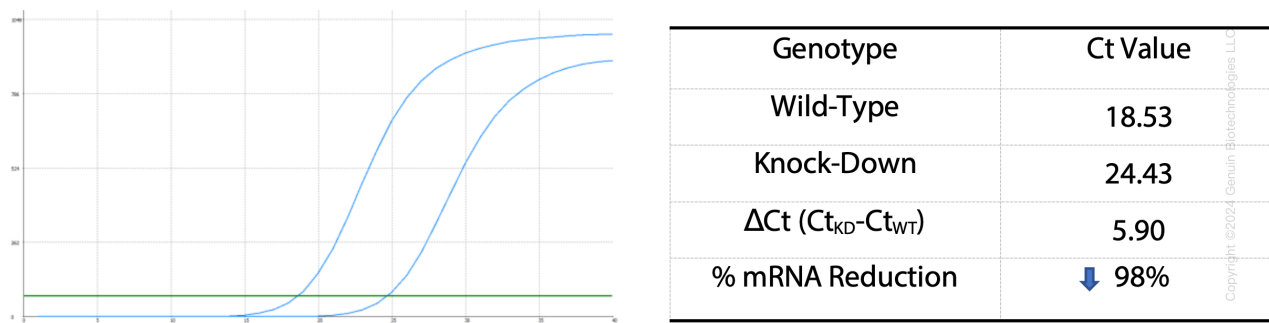
SUPPORT@GENUINBIOTECH.COM  
TEL: +1-540-855-7041

### ORDERS

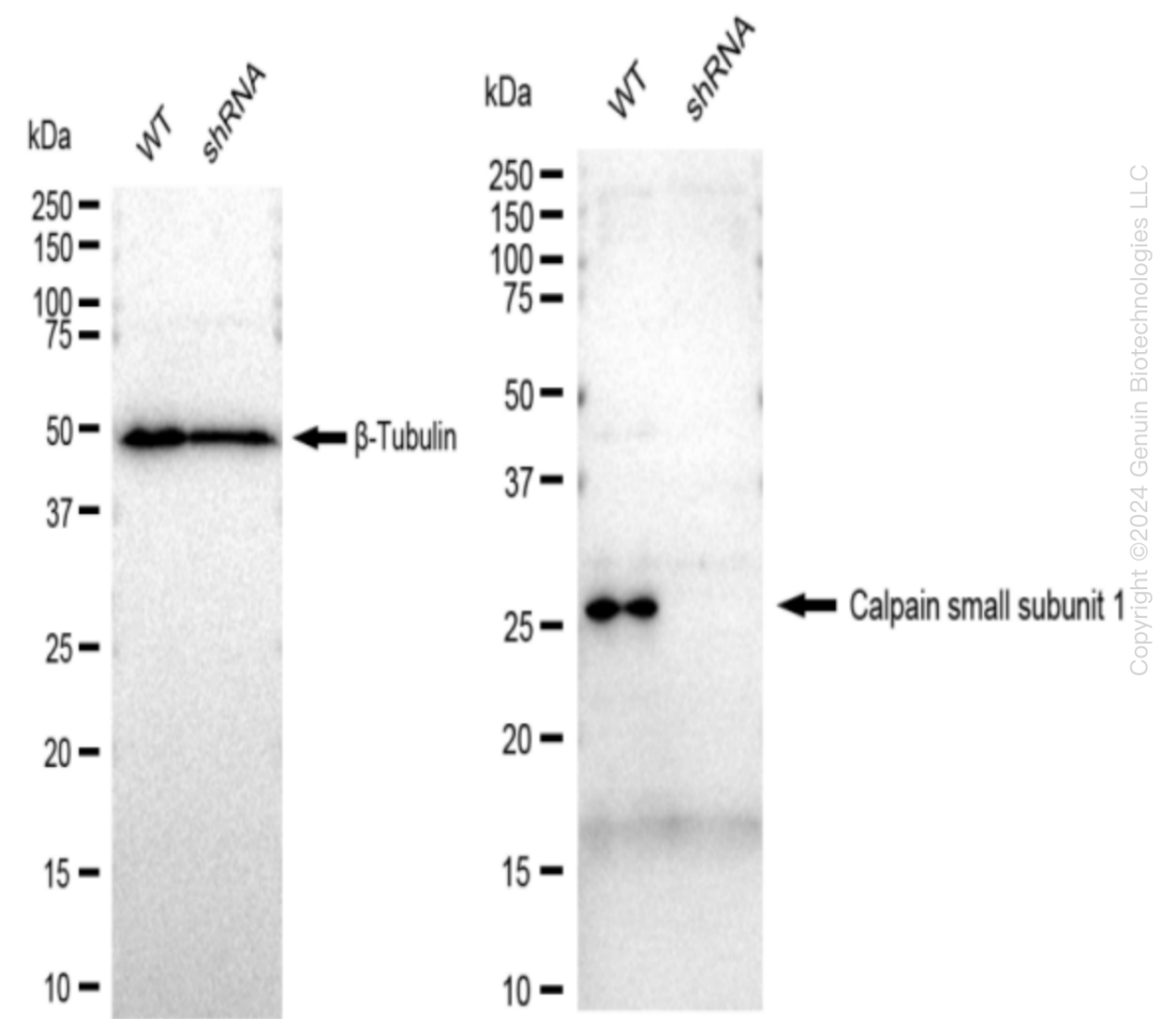
SALES@GENUINBIOTECH.COM  
FAX: +1-540-855-7041

[WWW.GENUINBIOTECH.COM](http://WWW.GENUINBIOTECH.COM)

Human CAPNS1 Knockdown Cell Line (WB-Validated)



RT-qPCR analysis. HeLa cells were infected with CAPNS1-specific shRNA lentiviral particles, total RNA was extracted from wild-type and knockdown cells, RT-qPCR was performed using gene-specific primers.  $\Delta Ct (Ct_{KD}-Ct_{WT})$  was used to calculate mRNA reduction (%) between wild-type and knockdown cells using the following formula:  $(1-1/2^{\Delta Ct}) \times 100\%$ .



SUPPORT

SUPPORT@GENUINBIOTECH.COM  
TEL: +1-540-855-7041

ORDERS

SALES@GENUINBIOTECH.COM  
FAX: +1-540-855-7041

WWW.GENUINBIOTECH.COM

Western blotting analysis. CAPNS1 protein expression in wild-type (WT) and shRNA knockdown (KD) HeLa cells was detected using Western blotting.  $\beta$ -Tubulin served as a loading control. The blots were incubated with primary (Cat#61453, 1:5,000) antibodies against CAPNS1 and  $\beta$ -Tubulin, respectively, followed by incubating with HRP-conjugated goat anti-rabbit secondary antibody (Cat#201, 1:20,000). Images were developed using FeQ™ ECL Substrate Kit (Cat#226).