

# Human HLTF Knockdown Cell Line (WB-Validated)



**Catalog #: C61467**

## Aliases

HLTF; Helicase Like Transcription Factor; HIP116A; RNF80; SMARCA3; SNF2L3; HLTF1; SWI/SNF Related, Matrix Associated, Actin Dependent Regulator Of Chromatin, Subfamily A, Member 3; SWI/SNF-Related Matrix-Associated Actin-Dependent Regulator Of Chromatin Subfamily A Member 3; RING-Type E3 Ubiquitin Transferase HLTF; Sucrose Nonfermenting Protein 2-Like 3; Helicase-Like Transcription Factor; RING Finger Protein 80; HIP116; ZBU1; DNA-Binding Protein/Plasminogen Activator Inhibitor-1 Regulator; DNA-Binding Protein/Plasminogen Activator Inhibitor 1 Regulator; Sucrose Nonfermenting-Like 3; SNF2-Like 3; EC 2.3.2.27; EC 3.6.4.-; EC 3.6.1

## Background

Gene Name: HLTF

NCBI Gene Entry: [6596](#)

## Storage

Store at liquid nitrogen for 1 year.

## Kit Components

1. Human HLTF Knockdown Cell Line (Wb-Validated)
2. Wild-type cell line

## Parental Cell Line

Human cell line supplied by the client

## Validation Methods

RT-qPCR, Western blotting (WB)

## Shipping

Shipped on Dry Ice.

## Instructions For Use

This knockdown cell line should be paired with wild-type cell line for use.

**Note:** This product is for research use only.

## Validation Data

---

### SUPPORT

SUPPORT@GENUINBIOTECH.COM  
TEL: +1-540-855-7041

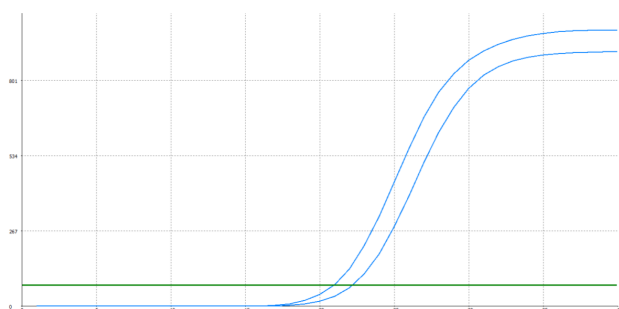
### ORDERS

SALES@GENUINBIOTECH.COM  
FAX: +1-540-855-7041

[WWW.GENUINBIOTECH.COM](http://WWW.GENUINBIOTECH.COM)

## Human HLTF Knockdown Cell Line (WB-Validated)

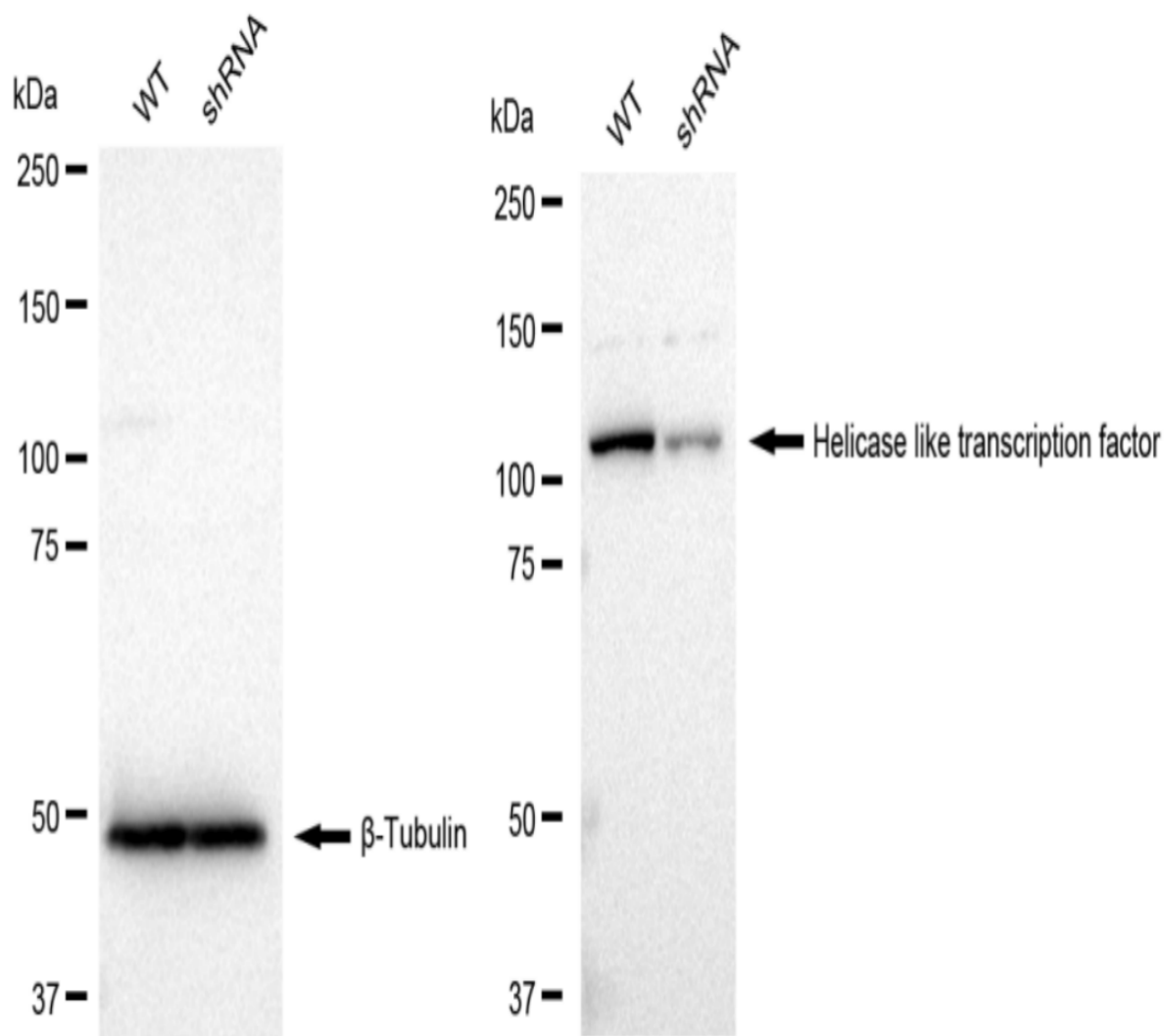
PAGE 2



Genotype	Ct Value
Wild-Type	20.8
Knock-Down	21.94
$\Delta Ct (Ct_{KD} - Ct_{WT})$	1.14
% mRNA Reduction	↓ 55%

Copyright ©2024 Genuin Biotechnologies LLC

RT-qPCR analysis. HeLa cells were infected with HLTF-specific shRNA lentiviral particles, total RNA was extracted from wild-type and knockdown cells, RT-qPCR was performed using gene-specific primers.  $\Delta Ct (Ct_{KD} - Ct_{WT})$  was used to calculate mRNA reduction (%) between wild-type and knockdown cells using the following formula:  $(1 - 1/2^{\Delta Ct}) \times 100\%$ .



Copyright ©2024 Genuin Biotechnologies LLC

### SUPPORT

SUPPORT@GENUINBIOTECH.COM  
TEL: +1-540-855-7041

### ORDERS

SALES@GENUINBIOTECH.COM  
FAX: +1-540-855-7041

[WWW.GENUINBIOTECH.COM](http://WWW.GENUINBIOTECH.COM)

Western blotting analysis. HLTF protein expression in wild-type (WT) and shRNA knockdown (KD) HeLa cells was detected using Western blotting.  $\beta$ -Tubulin served as a loading control. The blots were incubated with primary antibodies (Cat#61467, 1:5,000) against HLTF and  $\beta$ -Tubulin, respectively, followed by incubating with HRP-conjugated goat anti-rabbit secondary antibody (Cat#201, 1:20,000). Images were developed using FeQ™ ECL Substrate Kit (Cat#226).