

Human HSP90AB1 Knockdown Cell Line (WB-Validated)



Catalog #: C61472

Aliases

HSP90AB1; Heat Shock Protein 90 Alpha Family Class B Member 1; HSPC2; HSPCB; Heat Shock Protein 90kDa Alpha (Cytosolic), Class B Member 1; Heat Shock 90kD Protein 1, Beta; Heat Shock Protein HSP 90-Beta; Heat Shock 84 KDa; HSP90B; HSP84; Heat Shock Protein 90kDa Alpha Family Class B Member 1; Heat Shock 90kDa Protein 1, Beta; Heat Shock Protein 90 KDa; HSP90-Beta; D6S182; HSP 90; HSP 84

Background

Gene Name: HSP90AB1

NCBI Gene Entry: [3326](#)

Storage

Store at liquid nitrogen for 1 year.

Kit Components

1. Human HSP90AB1 Knockdown Cell Line (Wb-Validated)
2. Wild-type cell line

Parental Cell Line

Human cell line supplied by the client

Validation Methods

RT-qPCR, Western blotting (WB)

Shipping

Shipped on Dry Ice.

Instructions For Use

This knockdown cell line should be paired with wild-type cell line for use.

Note: This product is for research use only.

Validation Data

SUPPORT

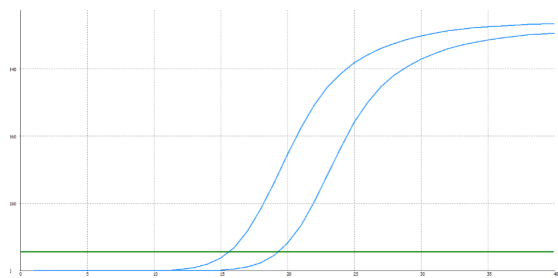
SUPPORT@GENUINBIOTECH.COM
TEL: +1-540-855-7041

ORDERS

SALES@GENUINBIOTECH.COM
FAX: +1-540-855-7041

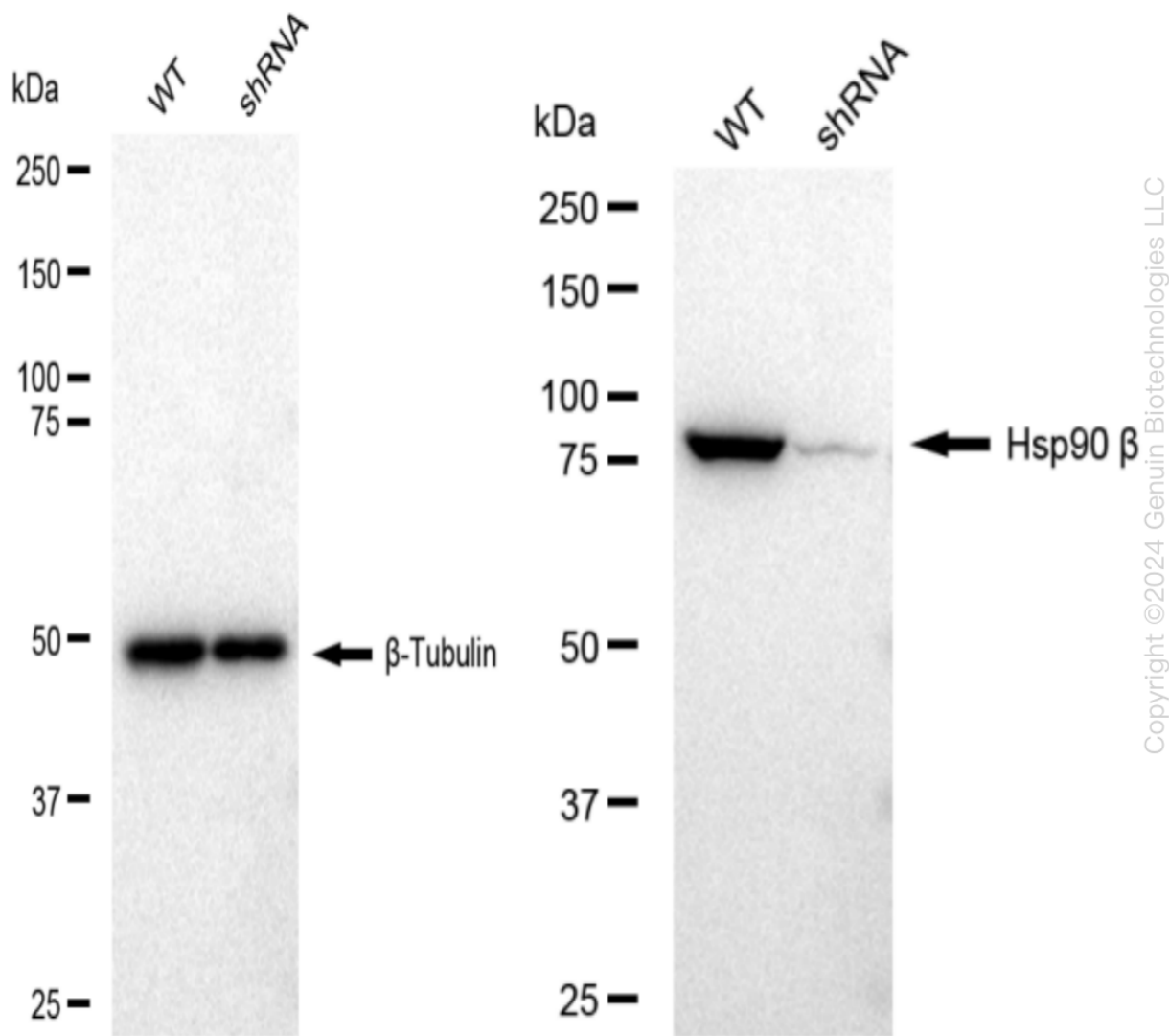
WWW.GENUINBIOTECH.COM

Human HSP90AB1 Knockdown Cell Line (WB-Validated)



Genotype	Ct Value
Wild-Type	15.47
Knock-Down	19.14
$\Delta Ct (Ct_{KD}-Ct_{WT})$	3.67
% mRNA Reduction	↓ 92%

RT-qPCR analysis. 293T cells were infected with HSP90AB1-specific shRNA lentiviral particles, total RNA was extracted from wild-type and knockdown cells, RT-qPCR was performed using gene-specific primers. $\Delta Ct (Ct_{KD}-Ct_{WT})$ was used to calculate mRNA reduction (%) between wild-type and knockdown cells using the following formula: $(1-1/2^{\Delta Ct}) \times 100\%$.



Western blotting analysis. HSP90AB1 protein expression in wild-type (WT) and shRNA

SUPPORT

SUPPORT@GENUINBIOTECH.COM
TEL: +1-540-855-7041

ORDERS

SALES@GENUINBIOTECH.COM
FAX: +1-540-855-7041

WWW.GENUINBIOTECH.COM

knockdown (KD) 293T cells was detected using Western blotting. β -Tubulin served as a loading control. The blots were incubated with primary antibodies (Cat#61472, 1:5,000) against HSP90AB1 and β -Tubulin, respectively, followed by incubating with HRP-conjugated goat anti-rabbit secondary antibody (Cat#201, 1:20,000). Images were developed using FeQ™ ECL Substrate Kit (Cat#226).