

Human HSPA8 Knockdown Cell Line (WB-Validated)



Catalog #: C61475

Aliases

HSPA8; Heat Shock Protein Family A (Hsp70) Member 8; HSC70; HSP73; HSPA10; HSC71; Lipopolysaccharide-Associated Protein 1; Heat Shock Cognate 71 KDa Protein; Heat Shock 70kDa Protein 8; LPS-Associated Protein 1; LAP-1; Epididymis Secretory Sperm Binding Protein Li 72p; N-Myristoyltransferase Inhibitor Protein 71; Constitutive Heat Shock Protein 70; Epididymis Luminal Protein 33; Heat Shock Cognate Protein 54; Heat Shock 70 KDa Protein 8; Heat Shock 70kd Protein 10; Heat Shock 70kD Protein 8; EC 3.6.4.10; HEL-S-72p; HEL-33; HSC54; HSP71; NIP71; LAP1

Background

Gene Name: HSPA8

NCBI Gene Entry: [3312](#)

Storage

Store at liquid nitrogen for 1 year.

Kit Components

1. Human HSPA8 Knockdown Cell Line (Wb-Validated)
2. Wild-type cell line

Parental Cell Line

Human cell line supplied by the client

Validation Methods

RT-qPCR, Western blotting (WB)

Shipping

Shipped on Dry Ice.

Instructions For Use

This knockdown cell line should be paired with wild-type cell line for use.

Note: This product is for research use only.

Validation Data

SUPPORT

SUPPORT@GENUINBIOTECH.COM
TEL: +1-540-855-7041

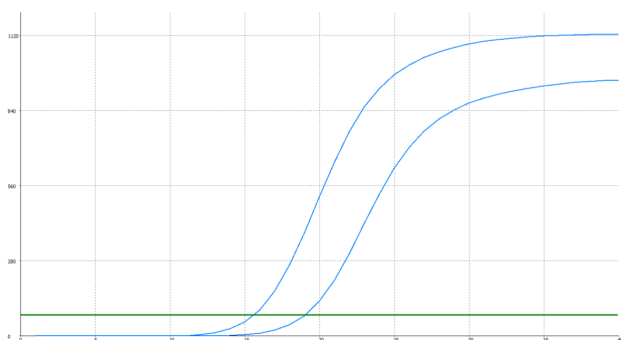
ORDERS

SALES@GENUINBIOTECH.COM
FAX: +1-540-855-7041

WWW.GENUINBIOTECH.COM

Human HSPA8 Knockdown Cell Line (WB-Validated)

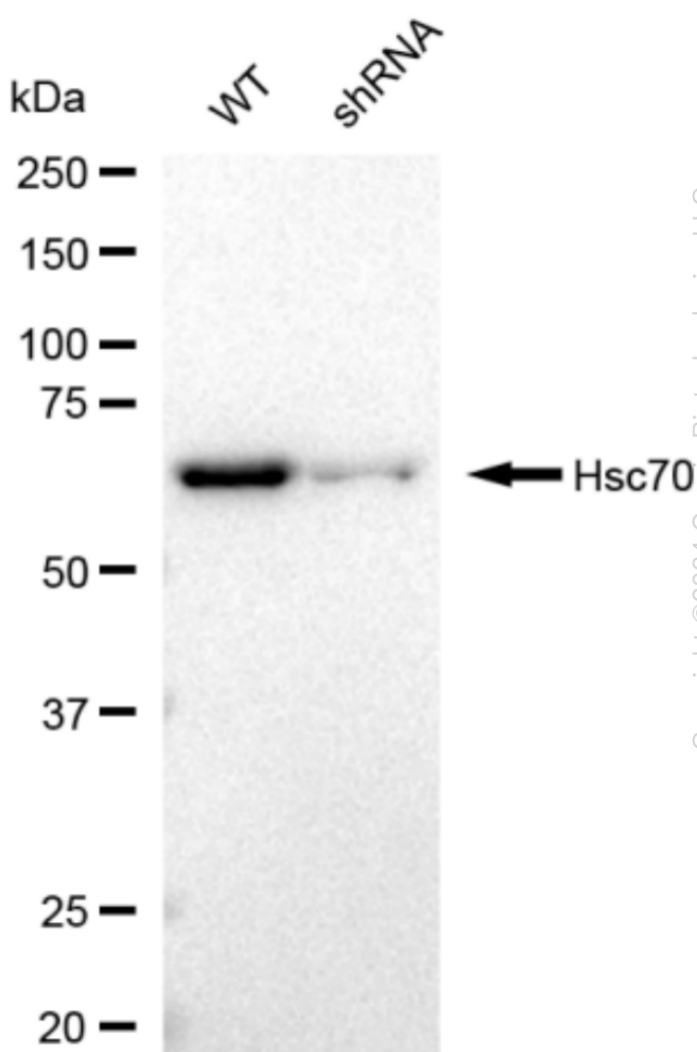
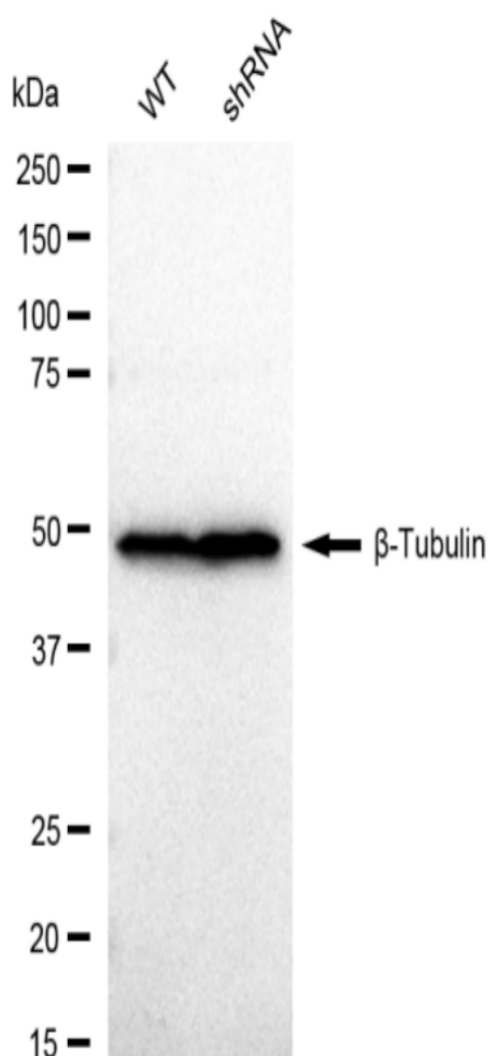
PAGE 2



Genotype	Ct Value
Wild-Type	15.61
Knock-Down	18.76
$\Delta Ct (Ct_{KD} - Ct_{WT})$	3.15
% mRNA Reduction	↓ 89%

Copyright ©2024 Genuin Biotechnologies LLC

RT-qPCR analysis. 293T cells were infected with HSPA8-specific shRNA lentiviral particles, total RNA was extracted from wild-type and knockdown cells, RT-qPCR was performed using gene-specific primers. $\Delta Ct (Ct_{KD} - Ct_{WT})$ was used to calculate mRNA reduction (%) between wild-type and knockdown cells using the following formula: $(1 - 1/2^{\Delta Ct}) \times 100\%$.



Copyright ©2024 Genuin Biotechnologies LLC

SUPPORT

SUPPORT@GENUINBIOTECH.COM
TEL: +1-540-855-7041

ORDERS

SALES@GENUINBIOTECH.COM
FAX: +1-540-855-7041

WWW.GENUINBIOTECH.COM

Western blotting analysis. HSPA8 protein expression in wild-type (WT) and shRNA knockdown (KD) 293T cells was detected using Western blotting. β -Tubulin served as a loading control. The blots were incubated with primary antibodies (Cat#61475, 1:5,000) against HSPA8 and β -Tubulin, respectively, followed by incubating with HRP-conjugated goat anti-rabbit secondary antibody (Cat#201, 1:20,000). Images were developed using FeQ™ ECL Substrate Kit (Cat#226).