

Human HSPD1 Knockdown Cell Line (WB-Validated)



Catalog #: C61476

Aliases

HSPD1; Heat Shock Protein Family D (Hsp60) Member 1; HSP60; GroEL; 60 KDa Heat Shock Protein, Mitochondrial; Heat Shock 60kDa Protein 1 (Chaperonin); Heat Shock Protein Family D Member 1; Mitochondrial Matrix Protein P1; P60 Lymphocyte Protein; 60 KDa Chaperonin; Chaperonin 60; HuCHA60; HSP-60; CPN60; SPG13; Spastic Paraplegia 13 (Autosomal Dominant); Epididymis Secretory Sperm Binding Protein; Heat Shock 60kD Protein 1 (Chaperonin); Short Heat Shock Protein 60 Hsp60s1; Heat Shock Protein 65; Heat Shock Protein 60; EC 5.6.1.7; HSP65; Hsp60; HLD4

Background

Gene Name: HSPD1

NCBI Gene Entry: [3329](#)

Storage

Store at liquid nitrogen for 1 year.

Kit Components

1. Human HSPD1 Knockdown Cell Line (Wb-Validated)
2. Wild-type cell line

Parental Cell Line

Human cell line supplied by the client

Validation Methods

RT-qPCR, Western blotting (WB)

Shipping

Shipped on Dry Ice.

Instructions For Use

This knockdown cell line should be paired with wild-type cell line for use.

Note: This product is for research use only.

Validation Data

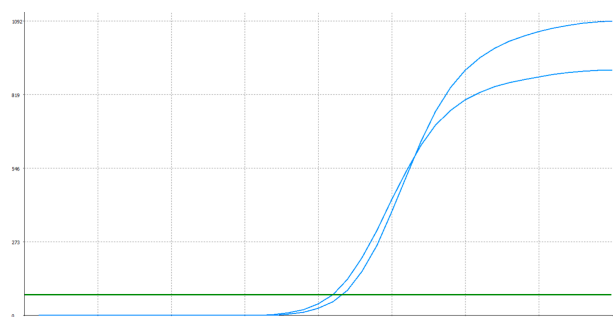
SUPPORT

SUPPORT@GENUINBIOTECH.COM
TEL: +1-540-855-7041

ORDERS

SALES@GENUINBIOTECH.COM
FAX: +1-540-855-7041

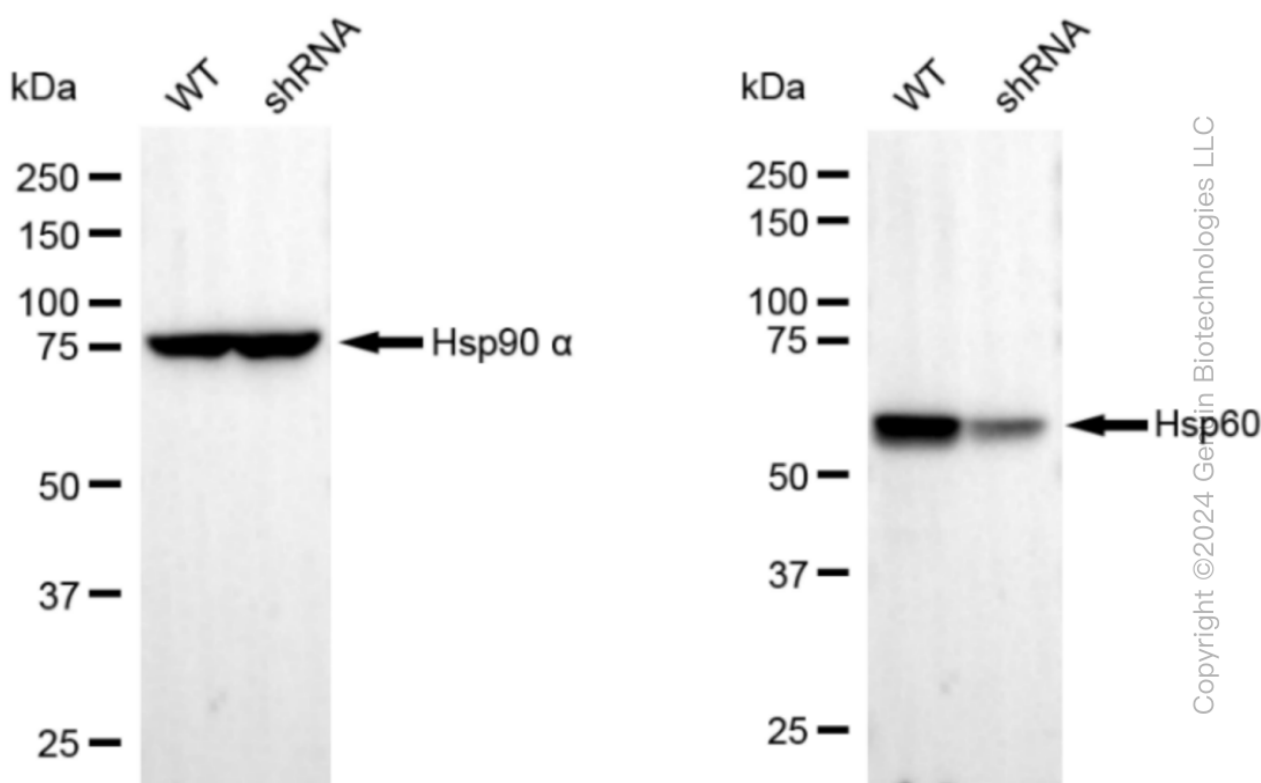
WWW.GENUINBIOTECH.COM



| Genotype | Ct Value |
|---------------------------------|----------|
| Wild-Type | 20.63 |
| Knock-Down | 21.61 |
| $\Delta Ct (Ct_{KD} - Ct_{WT})$ | 0.98 |
| % mRNA Reduction | ↓ 49% |

Copyright ©2025 Genuin Biotechnologies LLC

RT-qPCR analysis. HeLa cells were infected with HSPD1-specific shRNA lentiviral particles, total RNA was extracted from wild-type and knockdown cells, RT-qPCR was performed using gene-specific primers. $\Delta Ct (Ct_{KD} - Ct_{WT})$ was used to calculate mRNA reduction (%) between wild-type and knockdown cells using the following formula: $(1 - 1/2^{\Delta Ct}) \times 100\%$.



Copyright ©2024 Genuin Biotechnologies LLC

Western blotting analysis. HSPD1 protein expression in wild-type (WT) and shRNA knockdown (KD) HeLa cells was detected using Western blotting. Hsp90 α served as a loading control. The blots were incubated with primary antibodies against HSPD1 and Hsp90 α , respectively, followed by incubating with HRP-conjugated goat anti-rabbit secondary antibody. Images were developed using FeQ™ ECL Substrate Kit.