

Human METAP2 Knockdown Cell Line (WB-Validated)



Catalog #: C61489

Aliases

METAP2; Methionyl Aminopeptidase 2; MNPEP; MAP2; P67; Initiation Factor 2-Associated 67 KDa Glycoprotein; Methionine Aminopeptidase 2; Peptidase M; P67eIF2; Testicular Tissue Protein Li 17; EIF-2-Associated P67 Homolog; Peptidase M 2; EC 3.4.11.18; P67EIF2; MetAP 2; MAP 2

Background

Gene Name: METAP2

NCBI Gene Entry: [10988](#)

Storage

Store at liquid nitrogen for 1 year.

Kit Components

1. Human METAP2 Knockdown Cell Line (Wb-Validated)
2. Wild-type cell line

Parental Cell Line

Human cell line supplied by the client

Validation Methods

RT-qPCR, Western blotting (WB)

Shipping

Shipped on Dry Ice.

Instructions For Use

This knockdown cell line should be paired with wild-type cell line for use.

Note: This product is for research use only.

Validation Data

SUPPORT

SUPPORT@GENUINBIOTECH.COM
TEL: +1-540-855-7041

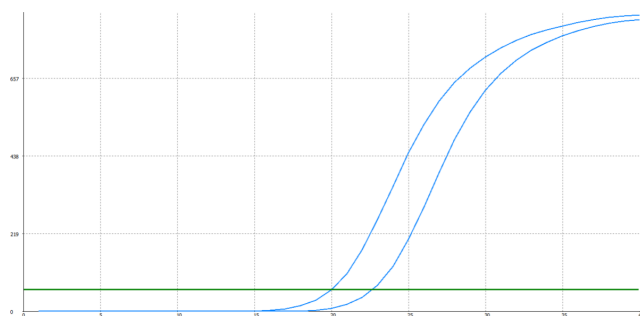
ORDERS

SALES@GENUINBIOTECH.COM
FAX: +1-540-855-7041

WWW.GENUINBIOTECH.COM

Human METAP2 Knockdown Cell Line (WB-Validated)

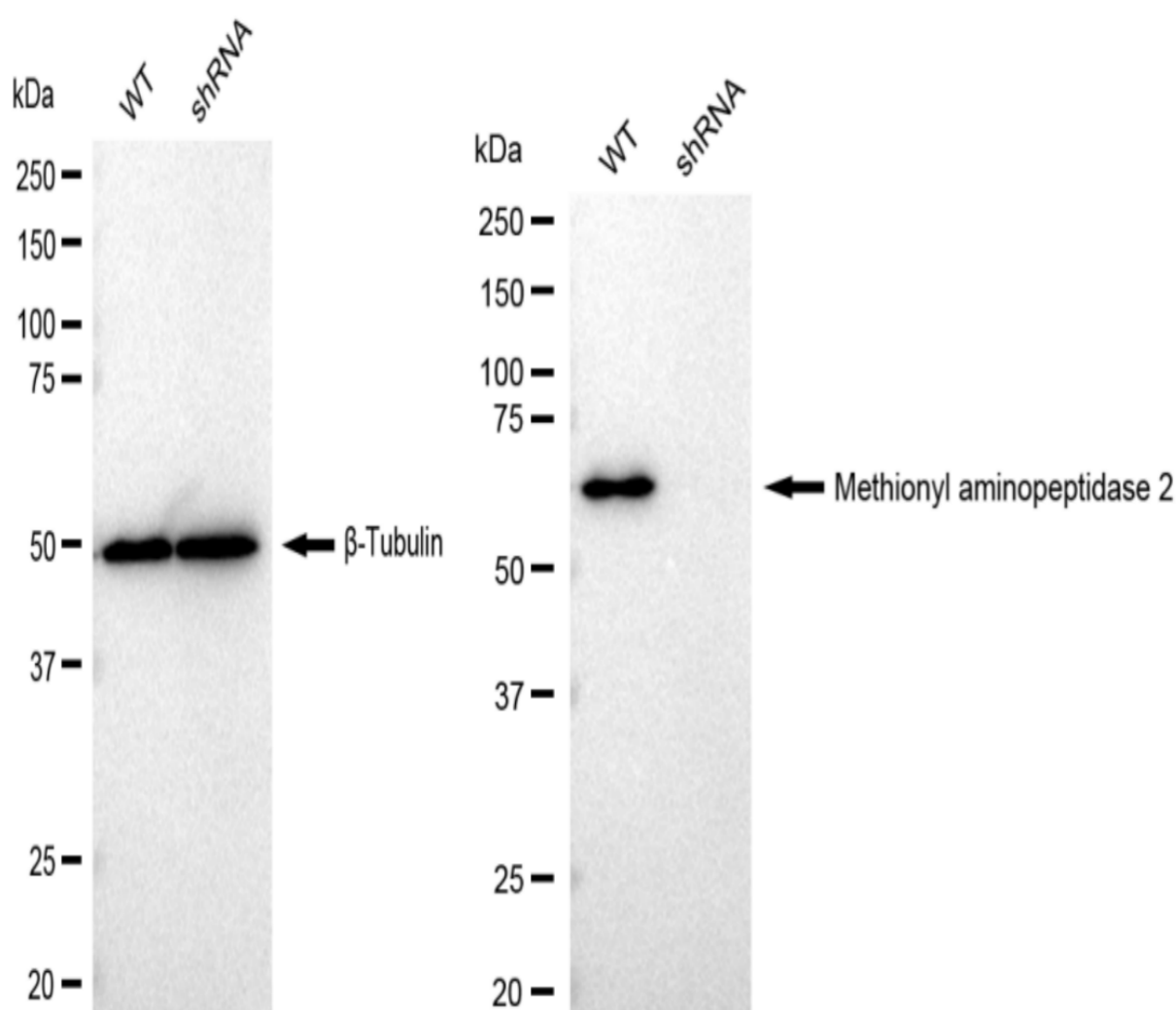
PAGE 2



Genotype	Ct Value
Wild-Type	19.98
Knock-Down	22.56
$\Delta Ct (Ct_{KD} - Ct_{WT})$	2.58
% mRNA Reduction	↓ 83%

Copyright ©2024 Genuin Biotechnologies LLC

RT-qPCR analysis. HeLa cells were infected with METAP2-specific shRNA lentiviral particles, total RNA was extracted from wild-type and knockdown cells, RT-qPCR was performed using gene-specific primers. $\Delta Ct (Ct_{KD} - Ct_{WT})$ was used to calculate mRNA reduction (%) between wild-type and knockdown cells using the following formula: $(1 - 1/2^{\Delta Ct}) \times 100\%$.



Copyright ©2024 Genuin Biotechnologies LLC

Western blotting analysis. METAP2 protein expression in wild-type (WT) and shRNA knockdown

SUPPORT

SUPPORT@GENUINBIOTECH.COM
TEL: +1-540-855-7041

ORDERS

SALES@GENUINBIOTECH.COM
FAX: +1-540-855-7041

WWW.GENUINBIOTECH.COM

(KD) HeLa cells was detected using Western blotting. β -Tubulin served as a loading control. The blots were incubated with primary antibodies (Cat#61489, 1:5,000) against METAP2 and β -Tubulin , respectively, followed by incubating with HRP-conjugated goat anti-rabbit secondary antibody (Cat#201, 1:20,000). Images were developed using FeQ™ ECL Substrate Kit (Cat#226).