

Human PGK1 Knockdown Cell Line (WB-Validated)



Catalog #: C61498

Aliases

PGK1; Phosphoglycerate Kinase 1; Cell Migration-Inducing Gene 10 Protein; Primer Recognition Protein; EC 2.7.2.3; PRP; PGKA; Epididymis Secretory Sperm Binding Protein Li 68p; HEL-S-68p; MIG10

Background

Gene Name: PGK1

NCBI Gene Entry: [5230](#)

Storage

Store at liquid nitrogen for 1 year.

Kit Components

1. Human PGK1 Knockdown Cell Line (Wb-Validated)
2. Wild-type cell line

Parental Cell Line

Human cell line supplied by the client

Validation Methods

RT-qPCR, Western blotting (WB)

Shipping

Shipped on Dry Ice.

Instructions For Use

This knockdown cell line should be paired with wild-type cell line for use.

Note: This product is for research use only.

Validation Data

SUPPORT

SUPPORT@GENUINBIOTECH.COM
TEL: +1-540-855-7041

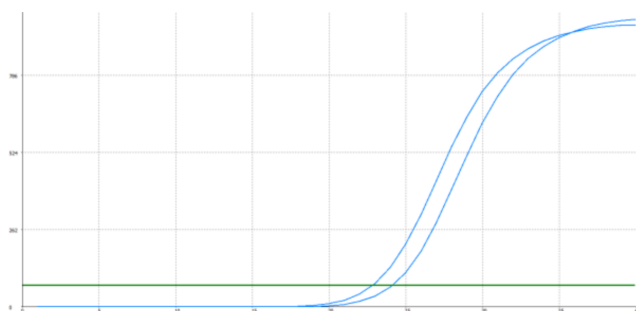
ORDERS

SALES@GENUINBIOTECH.COM
FAX: +1-540-855-7041

WWW.GENUINBIOTECH.COM

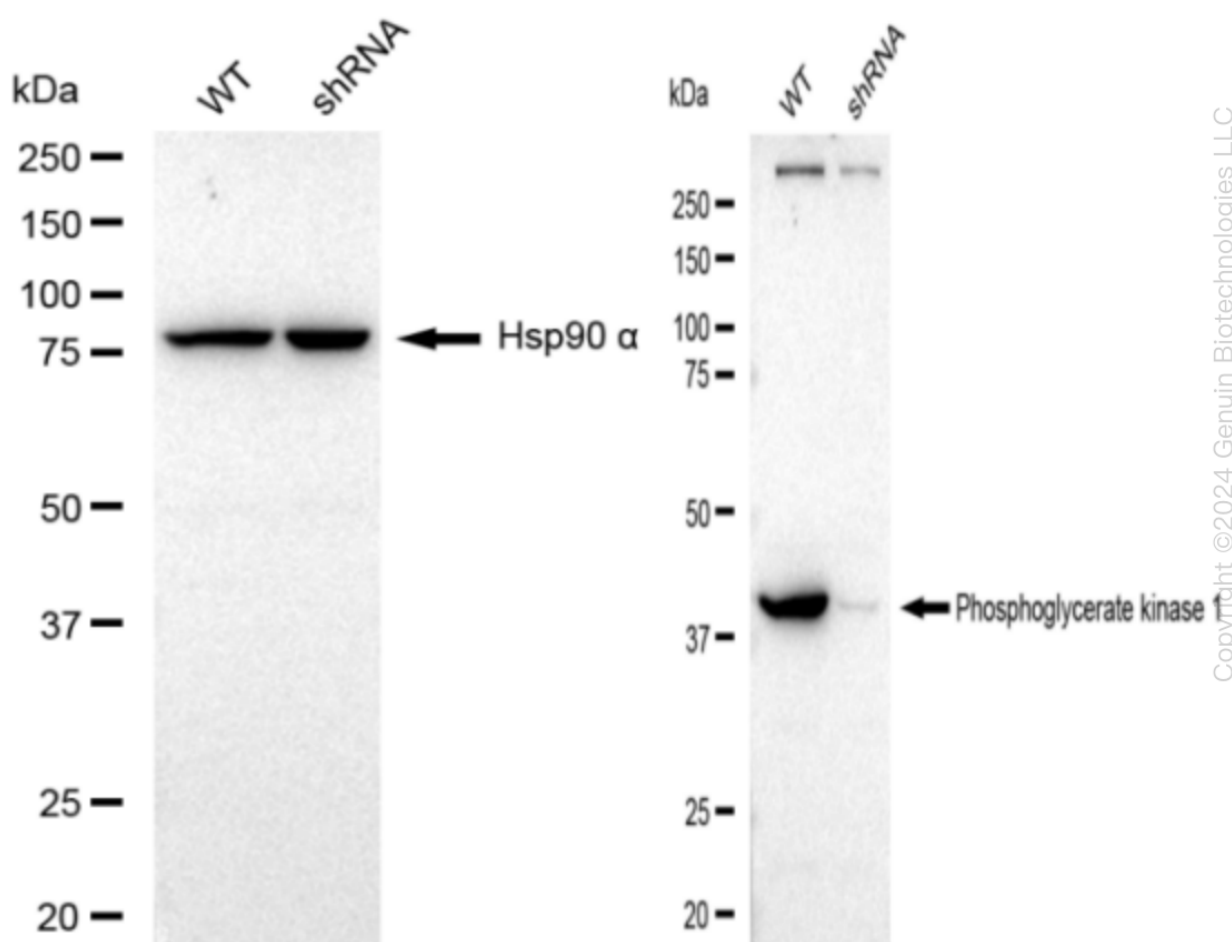
Human PGK1 Knockdown Cell Line (WB-Validated)

PAGE 2



Genotype	Ct Value
Wild-Type	22.7
Knock-Down	24.05
$\Delta Ct (Ct_{KD} - Ct_{WT})$	1.35
% mRNA Reduction	↓ 61%

RT-qPCR analysis. HeLa cells were infected with PGK1-specific shRNA lentiviral particles, total RNA was extracted from wild-type and knockdown cells, RT-qPCR was performed using gene-specific primers. $\Delta Ct (Ct_{KD} - Ct_{WT})$ was used to calculate mRNA reduction (%) between wild-type and knockdown cells using the following formula: $(1 - 1/2^{\Delta Ct}) \times 100\%$.



Western blotting analysis. PGK1 protein expression in wild-type (WT) and shRNA knockdown (KD) HeLa cells was detected using Western blotting. Hsp90 α served as a loading control. The

SUPPORT

SUPPORT@GENUINBIOTECH.COM
TEL: +1-540-855-7041

ORDERS

SALES@GENUINBIOTECH.COM
FAX: +1-540-855-7041

WWW.GENUINBIOTECH.COM

Human PGK1 Knockdown Cell Line (WB-Validated)

PAGE 3

blots were incubated with primary antibodies (Cat#61498, 1:5,000) against PGK1 and Hsp90 α , respectively, followed by incubating with HRP-conjugated goat anti-rabbit secondary antibody (Cat#201, 1:20,000). Images were developed using FeQ™ ECL Substrate Kit (Cat#226).

SUPPORT

SUPPORT@GENUINBIOTECH.COM
TEL: +1-540-855-7041

ORDERS

SALES@GENUINBIOTECH.COM
FAX: +1-540-855-7041

WWW.GENUINBIOTECH.COM