

Human PPM1G Knockdown Cell Line (WB-Validated)



Catalog #: C61501

Aliases

PPM1G; Protein Phosphatase, Mg²⁺/Mn²⁺ Dependent 1G; PP2CG; Protein Phosphatase Magnesium-Dependent 1 Gamma; Protein Phosphatase 1G ; Protein Phosphatase 1C; EC 3.1.3.16; PP2C-Gamma; PP2CGAMMA; Protein Phosphatase 1G (Formerly 2C), Magnesium-Dependent, Gamma Isoform; Protein Phosphatase, Mg²⁺/Mn²⁺ Dependent, 1G; Protein Phosphatase 2C, Gamma Isoform; Protein Phosphatase 2C Isoform Gamma; PP2C, Gamma; PP2Cgamma; PPP2CG; PPM1C

Background

Gene Name: PPM1G

NCBI Gene Entry: [5496](#)

Storage

Store at liquid nitrogen for 1 year.

Kit Components

1. Human PPM1G Knockdown Cell Line (Wb-Validated)
2. Wild-type cell line

Parental Cell Line

Human cell line supplied by the client

Validation Methods

RT-qPCR, Western blotting (WB)

Shipping

Shipped on Dry Ice.

Instructions For Use

This knockdown cell line should be paired with wild-type cell line for use.

Note: This product is for research use only.

Validation Data

SUPPORT

SUPPORT@GENUINBIOTECH.COM
TEL: +1-540-855-7041

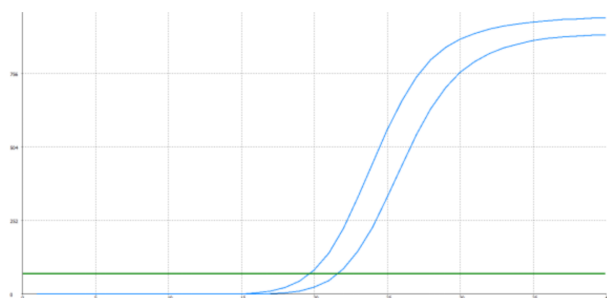
ORDERS

SALES@GENUINBIOTECH.COM
FAX: +1-540-855-7041

WWW.GENUINBIOTECH.COM

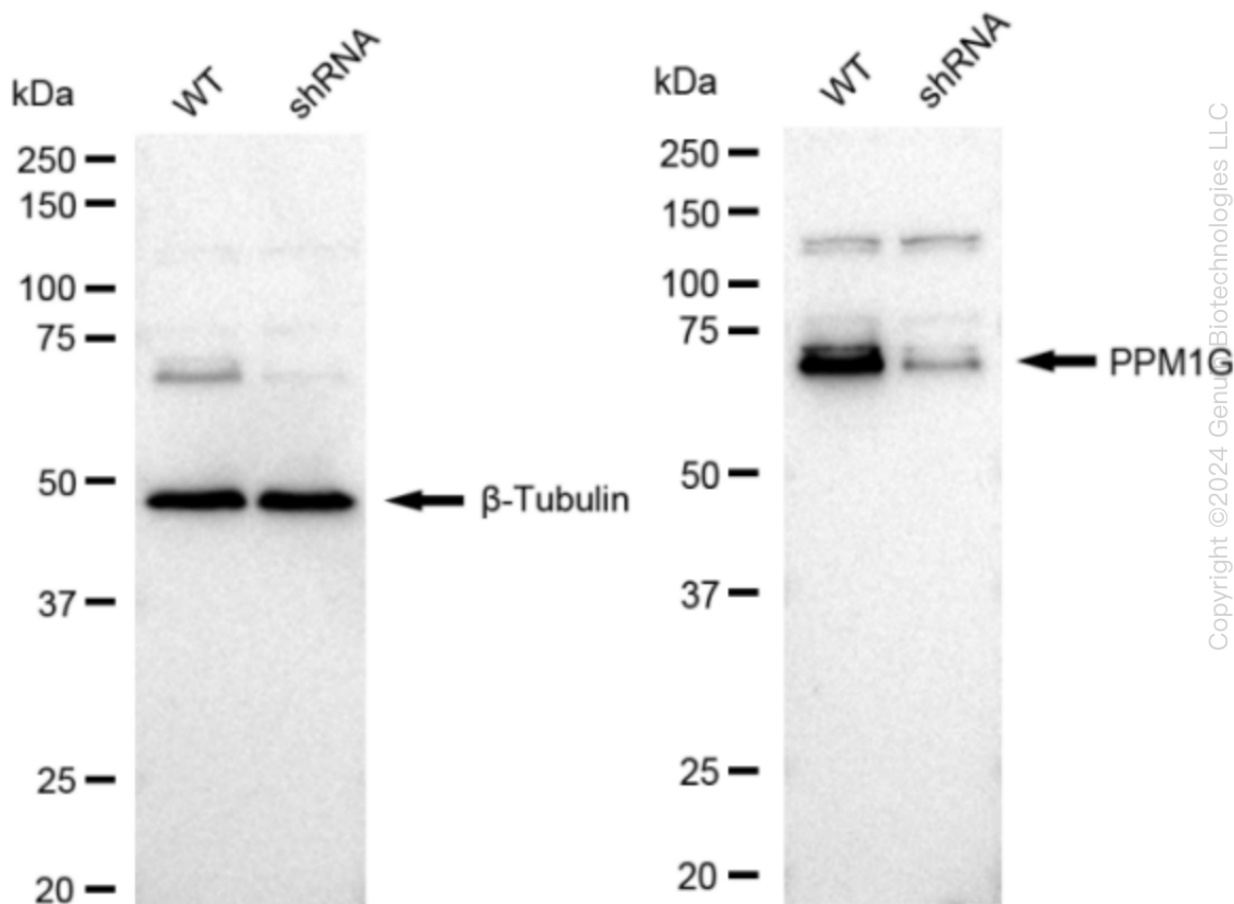
Human PPM1G Knockdown Cell Line (WB-Validated)

PAGE 2



Genotype	Ct Value
Wild-Type	19.59
Knock-Down	21.39
$\Delta Ct (Ct_{KD}-Ct_{WT})$	1.8
% mRNA Reduction	↓ 71%

RT-qPCR analysis. HeLa cells were infected with PPM1G-specific shRNA lentiviral particles, total RNA was extracted from wild-type and knockdown cells, RT-qPCR was performed using gene-specific primers. $\Delta Ct (Ct_{KD}-Ct_{WT})$ was used to calculate mRNA reduction (%) between wild-type and knockdown cells using the following formula: $(1-1/2^{\Delta Ct}) \times 100\%$.



Western blotting analysis. PPM1G protein expression in wild-type (WT) and shRNA knockdown (KD) HeLa cells was detected using Western blotting. β -Tubulin served as a loading control. The blots were incubated with primary antibodies (Cat#61500, 1:5,000) against PPM1G and β -Tubulin, respectively, followed by incubating with HRP-conjugated goat anti-rabbit secondary

SUPPORT

SUPPORT@GENUINBIOTECH.COM
TEL: +1-540-855-7041

ORDERS

SALES@GENUINBIOTECH.COM
FAX: +1-540-855-7041

WWW.GENUINBIOTECH.COM

Human PPM1G Knockdown Cell Line (WB-Validated)

PAGE 3

antibody (Cat#201, 1:20,000). Images were developed using FeQ™ ECL Substrate Kit (Cat#226).

SUPPORT

SUPPORT@GENUINBIOTECH.COM
TEL: +1-540-855-7041

ORDERS

SALES@GENUINBIOTECH.COM
FAX: +1-540-855-7041

WWW.GENUINBIOTECH.COM