

Human PRKAA1 Knockdown Cell Line (WB-Validated)



Catalog #: C61503

Aliases

PRKAA1; Protein Kinase AMP-Activated Catalytic Subunit Alpha 1; 5'-AMP-Activated Protein Kinase Catalytic Subunit Alpha-1; Protein Kinase, AMP-Activated, Alpha 1 Catalytic Subunit; Hydroxymethylglutaryl-CoA Reductase Kinase; Acetyl-CoA Carboxylase Kinase; Tau-Protein Kinase PRKAA1; AMPK Subunit Alpha-1; AMPK, Alpha, 1; ACACA Kinase; HMGCR Kinase; EC 2.7.11.1; AMPKa1; 5'-AMP-Activated Protein Kinase, Catalytic Alpha-1 Chain; AMP-Activated Protein Kinase, Catalytic, Alpha-1; AMP -Activate Kinase Alpha 1 Subunit; AMPK Alpha 1; EC 2.7.11.27; EC 2.7.11.31; EC 2.7.11.26; EC 2.7.11; AMPKA1; AMPK1; AMPK

Background

Gene Name: PRKAA1

NCBI Gene Entry: [5562](#)

Storage

Store at liquid nitrogen for 1 year.

Kit Components

1. Human PRKAA1 Knockdown Cell Line (Wb-Validated)
2. Wild-type cell line

Parental Cell Line

Human cell line supplied by the client

Validation Methods

RT-qPCR, Western blotting (WB)

Shipping

Shipped on Dry Ice.

Instructions For Use

This knockdown cell line should be paired with wild-type cell line for use.

Note: This product is for research use only.

Validation Data

SUPPORT

SUPPORT@GENUINBIOTECH.COM
TEL: +1-540-855-7041

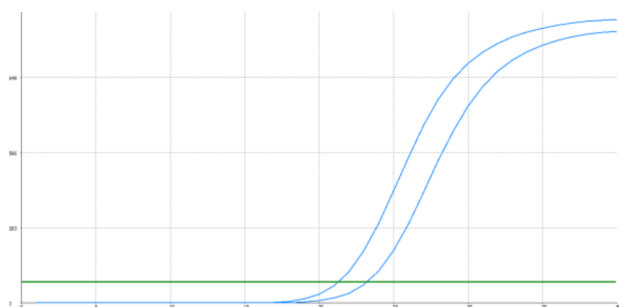
ORDERS

SALES@GENUINBIOTECH.COM
FAX: +1-540-855-7041

WWW.GENUINBIOTECH.COM

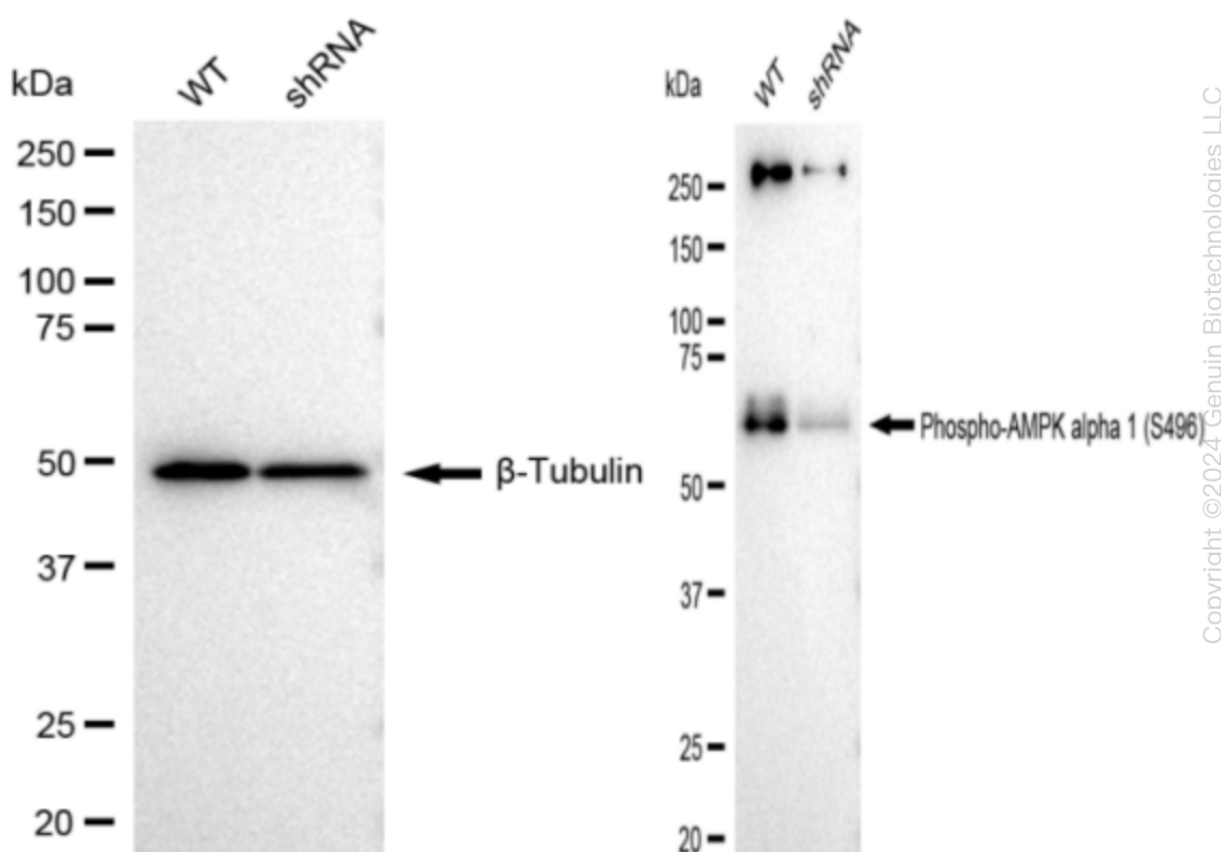
Human PRKAA1 Knockdown Cell Line (WB-Validated)

PAGE 2



Genotype	Ct Value
Wild-Type	21.23
Knock-Down	23.08
ΔCt ($Ct_{KD} - Ct_{WT}$)	1.85
% mRNA Reduction	↓ 72%

RT-qPCR analysis. HeLa cells were infected with PRKAA1-specific shRNA lentiviral particles, total RNA was extracted from wild-type and knockdown cells, RT-qPCR was performed using gene-specific primers. ΔCt ($Ct_{KD} - Ct_{WT}$) was used to calculate mRNA reduction (%) between wild-type and knockdown cells using the following formula: $(1 - 1/2^{\Delta Ct}) \times 100\%$.



Western blotting analysis. PRKAA1 protein expression in wild-type (WT) and shRNA knockdown (KD) HeLa cells was detected using Western blotting. β -Tubulin served as a loading control. The blots were incubated with primary antibodies (Cat#61502, 1:5,000) against PRKAA1 and β -Tubulin, respectively, followed by incubating with HRP-conjugated goat anti-rabbit secondary

SUPPORT

SUPPORT@GENUINBIOTECH.COM
TEL: +1-540-855-7041

ORDERS

SALES@GENUINBIOTECH.COM
FAX: +1-540-855-7041

WWW.GENUINBIOTECH.COM

Human PRKAA1 Knockdown Cell Line (WB-Validated)

PAGE 3

antibody (Cat#201, 1:20,000). Images were developed using FeQ™ ECL Substrate Kit (Cat#226).

SUPPORT

SUPPORT@GENUINBIOTECH.COM
TEL: +1-540-855-7041

ORDERS

SALES@GENUINBIOTECH.COM
FAX: +1-540-855-7041

WWW.GENUINBIOTECH.COM