

Human PVR Knockdown Cell Line (WB-Validated)



Catalog #: C61508

Aliases

PVR; PVR Cell Adhesion Molecule; Poliovirus Receptor; CD155; NECL5; HVED; PVS; Nectin-Like Protein 5; Necl-5; NECL-5; TAGE4; Nectin-Like 5; CD155 Antigen; Tage4

Background

Gene Name: PVR

NCBI Gene Entry: [5817](#)

Storage

Store at liquid nitrogen for 1 year.

Kit Components

1. Human PVR Knockdown Cell Line (Wb-Validated)
2. Wild-type cell line

Parental Cell Line

Human cell line supplied by the client

Validation Methods

RT-qPCR, Western blotting (WB)

Shipping

Shipped on Dry Ice.

Instructions For Use

This knockdown cell line should be paired with wild-type cell line for use.

Note: This product is for research use only.

Validation Data

SUPPORT

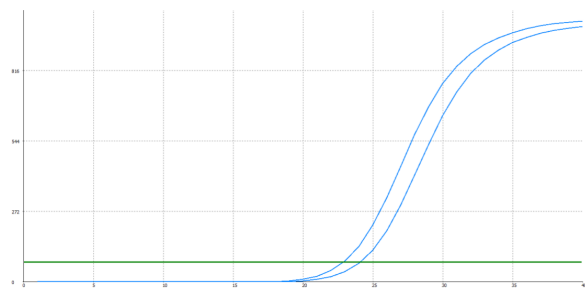
SUPPORT@GENUINBIOTECH.COM
TEL: +1-540-855-7041

ORDERS

SALES@GENUINBIOTECH.COM
FAX: +1-540-855-7041

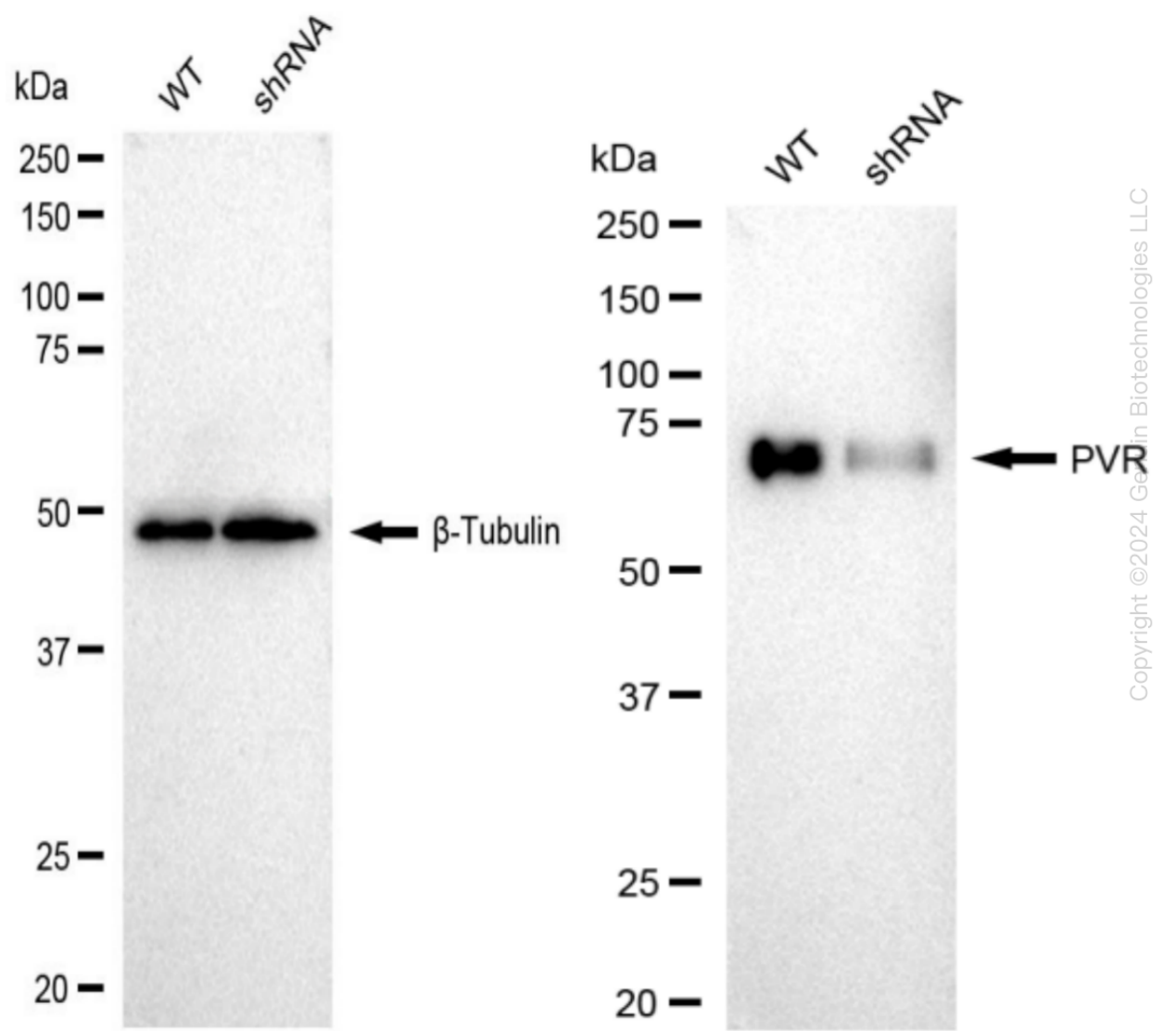
WWW.GENUINBIOTECH.COM

Human PVR Knockdown Cell Line (WB-Validated)



Genotype	Ct Value
Wild-Type	22.78
Knock-Down	23.98
$\Delta Ct (Ct_{KD}-Ct_{WT})$	1.2
% mRNA Reduction	↓ 57%

RT-qPCR analysis. HeLa cells were infected with PVR-specific shRNA lentiviral particles, total RNA was extracted from wild-type and knockdown cells, RT-qPCR was performed using gene-specific primers. $\Delta Ct (Ct_{KD}-Ct_{WT})$ was used to calculate mRNA reduction (%) between wild-type and knockdown cells using the following formula: $(1-1/2^{\Delta Ct}) \times 100\%$.



SUPPORT

SUPPORT@GENUINBIOTECH.COM
TEL: +1-540-855-7041

ORDERS

SALES@GENUINBIOTECH.COM
FAX: +1-540-855-7041

WWW.GENUINBIOTECH.COM

Western blotting analysis. PVR protein expression in wild-type (WT) and shRNA knockdown (KD) HeLa cells was detected using Western blotting. β -Tubulin served as a loading control. The blots were incubated with primary antibodies (Cat#61508, 1:5,000) against PVR and β -Tubulin, respectively, followed by incubating with HRP-conjugated goat anti-rabbit secondary antibody (Cat#201, 1:20,000). Images were developed using FeQ™ ECL Substrate Kit (Cat#226).