

Human SEC24D Knockdown Cell Line (WB-Validated)



Catalog #: C61515

Aliases

SEC24D; SEC24 Homolog D, COPII Coat Complex Component; KIAA0755; Protein Transport Protein Sec24D; SEC24-Related Protein D; SEC24 (S. Cerevisiae) Related Gene Family, Member D; SEC24 Family, Member D (S. Cerevisiae); SEC24 Related Gene Family, Member D; SEC24 Family Member D; CLCRP2

Background

Gene Name: SEC24D
NCBI Gene Entry: [9871](#)

Storage

Store at liquid nitrogen for 1 year.

Kit Components

1. Human SEC24D Knockdown Cell Line (Wb-Validated)
2. Wild-type cell line

Parental Cell Line

Human cell line supplied by the client

Validation Methods

RT-qPCR, Western blotting (WB)

Shipping

Shipped on Dry Ice.

Instructions For Use

This knockdown cell line should be paired with wild-type cell line for use.

Note: This product is for research use only.

Validation Data

SUPPORT

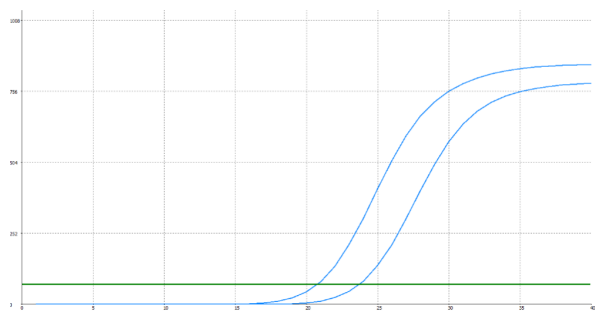
SUPPORT@GENUINBIOTECH.COM
TEL: +1-540-855-7041

ORDERS

SALES@GENUINBIOTECH.COM
FAX: +1-540-855-7041

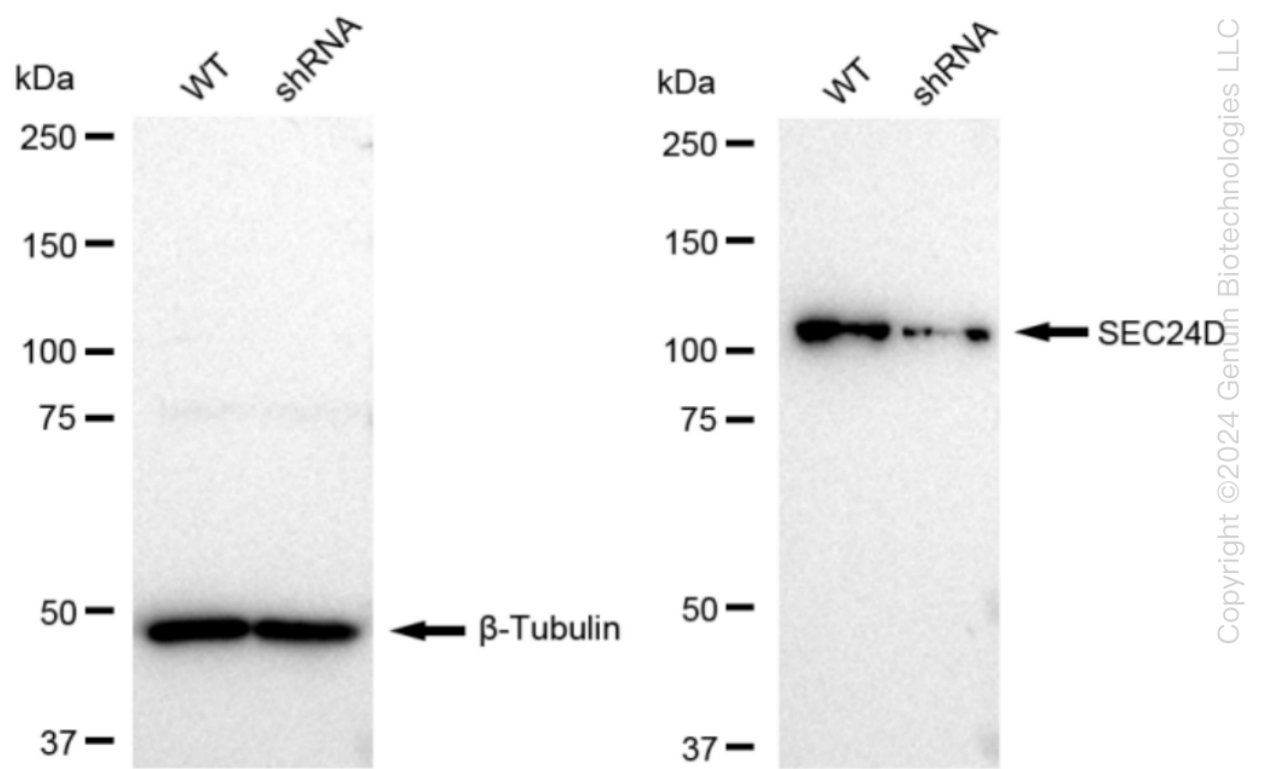
WWW.GENUINBIOTECH.COM

Human SEC24D Knockdown Cell Line (WB-Validated)



| Genotype | Ct Value |
|-----------------------------------|----------|
| Wild-Type | 20.46 |
| Knock-Down | 23.27 |
| ΔCt ($Ct_{KD}-Ct_{WT}$) | 2.81 |
| % mRNA Reduction | ↓ 86% |

RT-qPCR analysis. HeLa cells were infected with SEC24D-specific shRNA lentiviral particles, total RNA was extracted from wild-type and knockdown cells, RT-qPCR was performed using gene-specific primers. ΔCt ($Ct_{KD}-Ct_{WT}$) was used to calculate mRNA reduction (%) between wild-type and knockdown cells using the following formula: $(1-1/2^{\Delta Ct}) \times 100\%$.



Western blotting analysis. SEC24D protein expression in wild-type (WT) and shRNA knockdown (KD) HeLa cells was detected using Western blotting. β -Tubulin served as a loading control. The blots were incubated with primary antibodies (Cat#61515, 1:5,000) against SEC24D and β -Tubulin, respectively, followed by incubating with HRP-conjugated goat anti-rabbit secondary antibody (Cat#201, 1:20,000). Images were developed using FeQ™ ECL Substrate Kit (Cat#226).

SUPPORT

SUPPORT@GENUINBIOTECH.COM
TEL: +1-540-855-7041

ORDERS

SALES@GENUINBIOTECH.COM
FAX: +1-540-855-7041

WWW.GENUINBIOTECH.COM