

# Human STXBP1 Knockdown Cell Line (WB-Validated)



**Catalog #: C61518**

## Aliases

STXBP1; Syntaxin Binding Protein 1; MUNC18-1; Syntaxin-Binding Protein 1; UNC18; Protein Unc-18 Homolog 1; Protein Unc-18 Homolog A; Unc-18A; Unc18-1; HUNC18; N-Sec1; RBSEC1; NSEC1; P67; Neuronal SEC1; RbSec1; UNC18A; NSec1; DEE4

## Background

Gene Name: STXBP1  
NCBI Gene Entry: [6812](#)

## Storage

Store at liquid nitrogen for 1 year.

## Kit Components

1. Human STXBP1 Knockdown Cell Line (Wb-Validated)
2. Wild-type cell line

## Parental Cell Line

Human cell line supplied by the client

## Validation Methods

RT-qPCR, Western blotting (WB)

## Shipping

Shipped on Dry Ice.

## Instructions For Use

This knockdown cell line should be paired with wild-type cell line for use.

**Note:** This product is for research use only.

## Validation Data

---

### SUPPORT

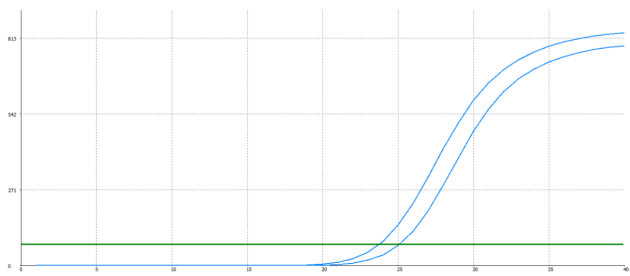
SUPPORT@GENUINBIOTECH.COM  
TEL: +1-540-855-7041

### ORDERS

SALES@GENUINBIOTECH.COM  
FAX: +1-540-855-7041

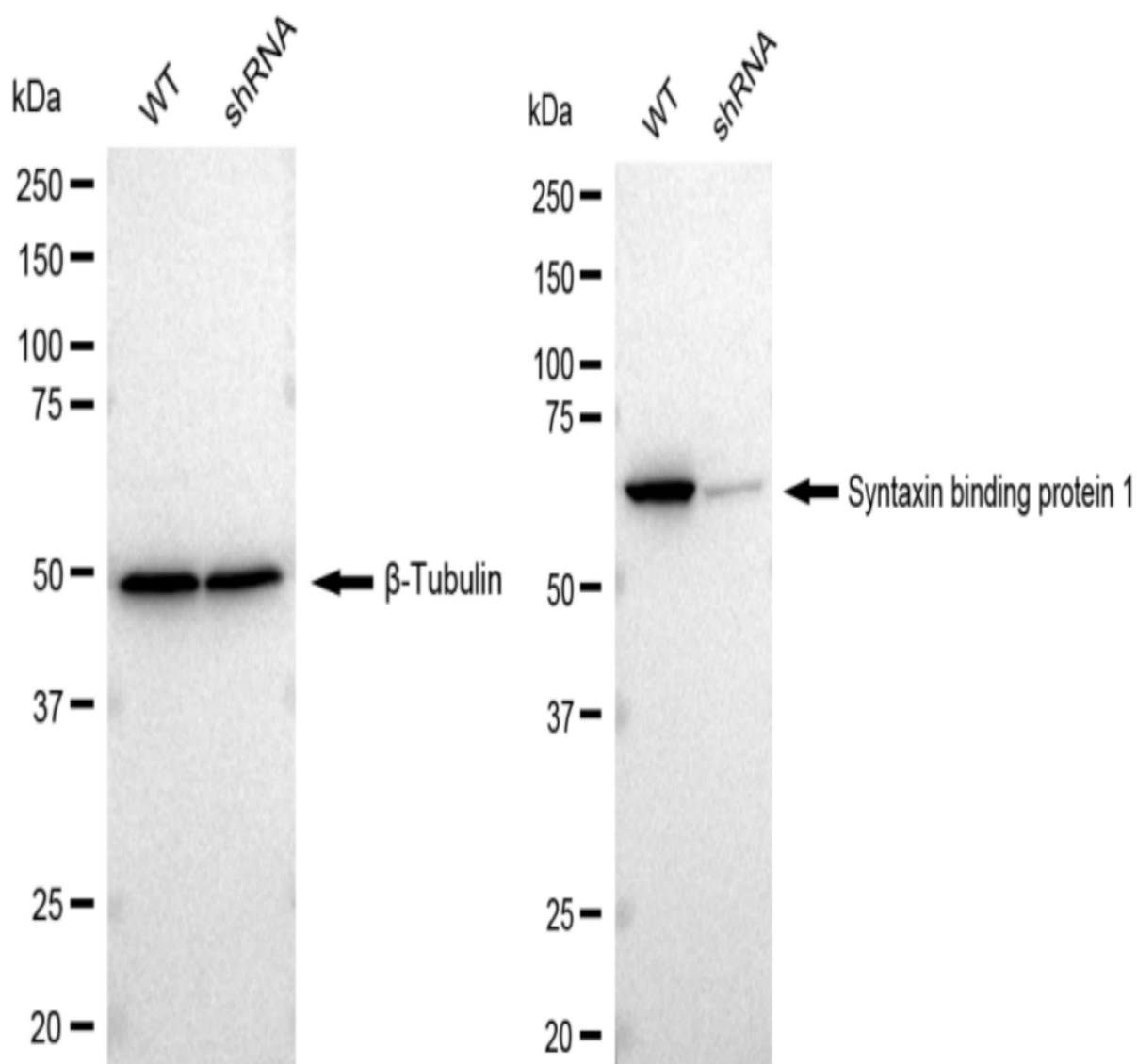
[WWW.GENUINBIOTECH.COM](http://WWW.GENUINBIOTECH.COM)

Human STXBP1 Knockdown Cell Line (WB-Validated)



Genotype	Ct Value
Wild-Type	23.32
Knock-Down	24.53
$\Delta$ Ct (Ct <sub>KD</sub> -Ct <sub>WT</sub> )	1.21
% mRNA Reduction	↓ 57%

RT-qPCR analysis. HeLa cells were infected with STXBP1-specific shRNA lentiviral particles, total RNA was extracted from wild-type and knockdown cells, RT-qPCR was performed using gene-specific primers.  $\Delta$ Ct (Ct<sub>KD</sub>-Ct<sub>WT</sub>) was used to calculate mRNA reduction (%) between wild-type and knockdown cells using the following formula:  $(1-1/2^{\Delta\text{Ct}}) \times 100\%$ .



Western blotting analysis. STXBP1 protein expression in wild-type (WT) and shRNA knockdown (KD) HeLa cells was detected using Western blotting.  $\beta$ -Tubulin served as a loading control. The blots were incubated with primary antibodies (Cat#61518, 1:5,000) against STXBP1 and  $\beta$ -Tubulin, respectively, followed by incubating with HRP-conjugated goat anti-rabbit secondary antibody (Cat#201, 1:20,000). Images were developed using FeQ™ ECL Substrate Kit (Cat#226).