

Human KRT7 Knockdown Cell Line (WB-Validated)



Catalog #: C61526

Aliases

KRT7; KeRatin 7; CK-7; SCL; K7; KeRatin, Type II Cytoskeletal 7; Sarcolectin 2; K2C7 2; CK7 2; KeRatin, 55K Type II; Cytoskeletal; Type-II KeRatin Kb7; KeRatin 7, Type II; CytokeRatin 7; KeRatin, Simple Epithelial Type I, K7; Type II Mesothelial KeRatin K7; CytokeRatin-7; KeRatin-7

Background

Gene Name: KRT7

NCBI Gene Entry: [3855](#)

Storage

Store at liquid nitrogen for 1 year.

Kit Components

1. Human KRT7 Knockdown Cell Line (Wb-Validated)
2. Wild-type cell line

Parental Cell Line

Human cell line supplied by the client

Validation Methods

RT-qPCR, Western blotting (WB)

Shipping

Shipped on Dry Ice.

Instructions For Use

This knockdown cell line should be paired with wild-type cell line for use.

Note: This product is for research use only.

Validation Data

SUPPORT

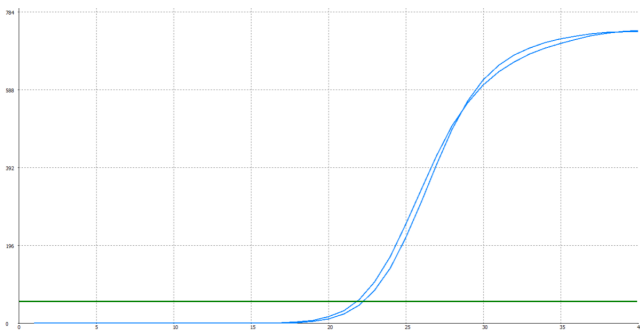
SUPPORT@GENUINBIOTECH.COM
TEL: +1-540-855-7041

ORDERS

SALES@GENUINBIOTECH.COM
FAX: +1-540-855-7041

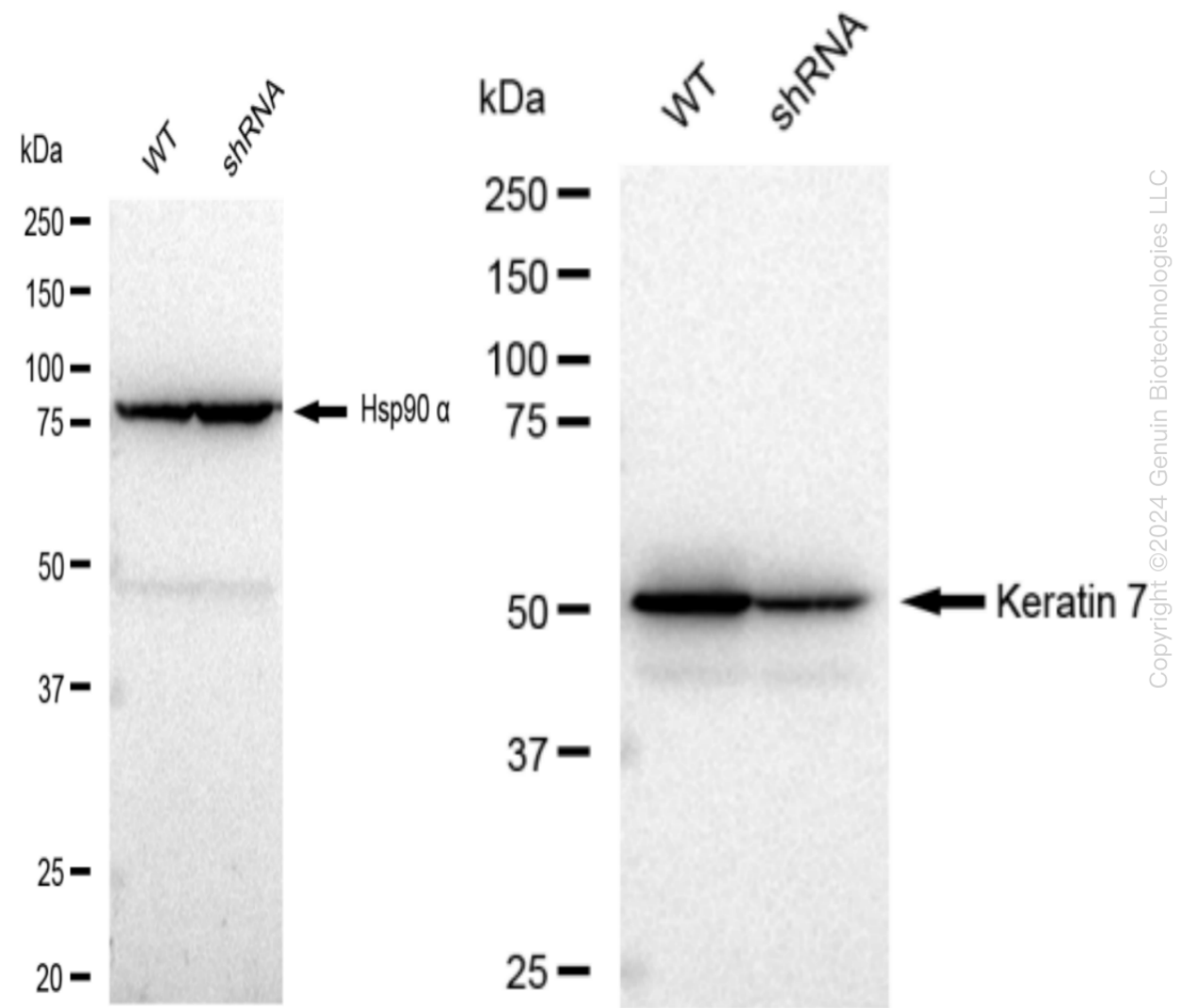
WWW.GENUINBIOTECH.COM

Human KRT7 Knockdown Cell Line (WB-Validated)



Genotype	Ct Value
Wild-Type	18.07
Knock-Down	19.62
$\Delta Ct (Ct_{KD}-Ct_{WT})$	1.55
% mRNA Reduction	↓ 66%

RT-qPCR analysis. HeLa cells were infected with KRT7-specific shRNA lentiviral particles, total RNA was extracted from wild-type and knockdown cells, RT-qPCR was performed using gene-specific primers. $\Delta Ct (Ct_{KD}-Ct_{WT})$ was used to calculate mRNA reduction (%) between wild-type and knockdown cells using the following formula: $(1-1/2^{\Delta Ct}) \times 100\%$.



SUPPORT

SUPPORT@GENUINBIOTECH.COM
TEL: +1-540-855-7041

ORDERS

SALES@GENUINBIOTECH.COM
FAX: +1-540-855-7041

WWW.GENUINBIOTECH.COM

Western blotting analysis. KRT7 protein expression in wild-type (WT) and shRNA knockdown (KD) HeLa cells was detected using Western blotting. Hsp90 α served as a loading control. The blots were incubated with primary antibodies (Cat#61269, 1:10,000) against KRT7 and Hsp90 α , respectively, followed by incubating with HRP-conjugated goat anti-rabbit secondary antibody (Cat#201, 1:20,000). Images were developed using FeQ™ ECL Substrate Kit (Cat#226).