

# Human CLP1 Knockdown Cell Line (WB-Validated)



**Catalog #: C61566**

## Aliases

CLP1; Cleavage Factor Polyribonucleotide Kinase Subunit 1; HEAB; Cleavage And Polyadenylation Factor I Subunit 1; Polyribonucleotide 5'-Hydroxyl-Kinase Clp1; Pre-mRNA Cleavage Complex II Protein Clp1; Polyadenylation Factor Clp1; Polynucleotide Kinase Clp1; EC 2.7.1.78; HClp1; CLP1, Cleavage And Polyadenylation Factor I Subunit, Homolog (S. Cerevisiae); Polyribonucleotide 5'-Hydroxyl-Kinase; Homolog Of Yeast CFIA Subunit Clp1p; ATP/GTP-Binding Protein; ATP/GTPbinding Protein; HCLP1

## Background

Gene Name: CLP1

NCBI Gene Entry: [10978](#)

## Storage

Store at liquid nitrogen for 1 year.

## Kit Components

1. Human CLP1 Knockdown Cell Line (Wb-Validated)
2. Wild-type cell line

## Parental Cell Line

Human cell line supplied by the client

## Validation Methods

RT-qPCR, Western blotting (WB)

## Shipping

Shipped on Dry Ice.

## Instructions For Use

This knockdown cell line should be paired with wild-type cell line for use.

**Note:** This product is for research use only.

## Validation Data

---

### SUPPORT

SUPPORT@GENUINBIOTECH.COM  
TEL: +1-540-855-7041

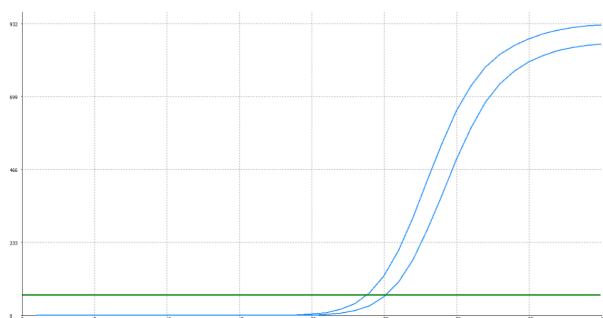
### ORDERS

SALES@GENUINBIOTECH.COM  
FAX: +1-540-855-7041

[WWW.GENUINBIOTECH.COM](http://WWW.GENUINBIOTECH.COM)

## Human CLP1 Knockdown Cell Line (WB-Validated)

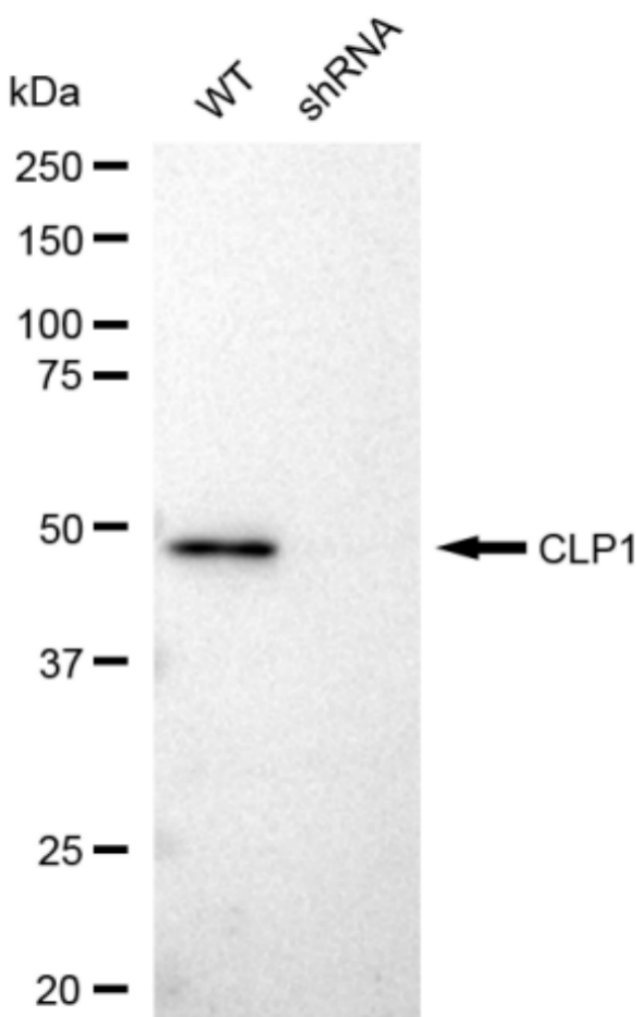
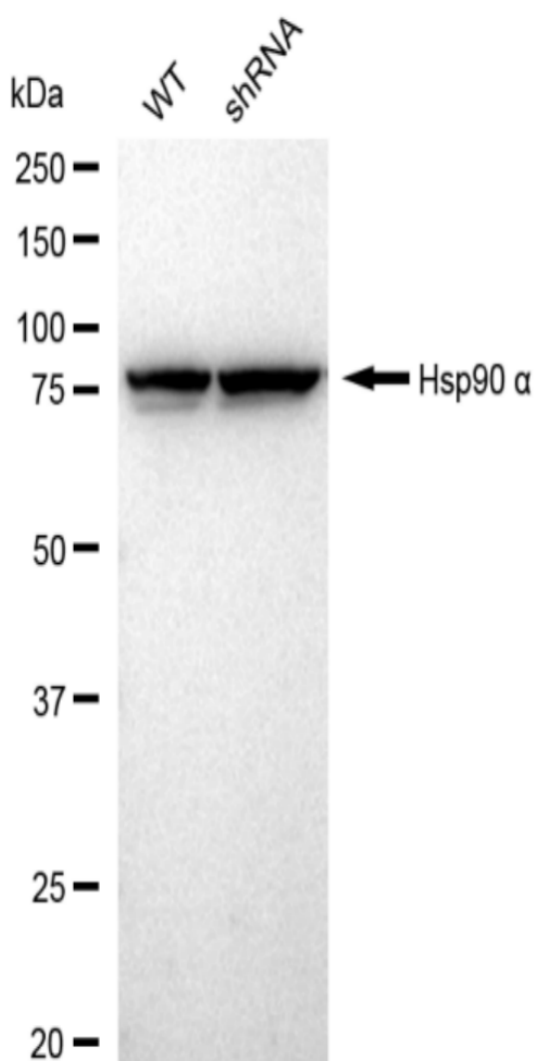
PAGE 2



Genotype	Ct Value
Wild-Type	23.83
Knock-Down	25.03
$\Delta Ct (Ct_{KD} - Ct_{WT})$	1.2
% mRNA Reduction	↓ 57%

Copyright ©2024 Genuin Biotechnologies LLC

RT-qPCR analysis. HeLa cells were infected with CLP1-specific shRNA lentiviral particles, total RNA was extracted from wild-type and knockdown cells, RT-qPCR was performed using gene-specific primers.  $\Delta Ct (Ct_{KD} - Ct_{WT})$  was used to calculate mRNA reduction (%) between wild-type and knockdown cells using the following formula:  $(1 - 1/2^{\Delta Ct}) \times 100\%$ .



Copyright ©2024 Genuin Biotechnologies LLC

### SUPPORT

SUPPORT@GENUINBIOTECH.COM  
TEL: +1-540-855-7041

### ORDERS

SALES@GENUINBIOTECH.COM  
FAX: +1-540-855-7041

WWW.GENUINBIOTECH.COM

Western blotting analysis. CLP1 protein expression in wild-type (WT) and shRNA knockdown (KD) HeLa cells was detected using Western blotting. Hsp90  $\alpha$  served as a loading control. The blots were incubated with primary antibodies (Cat#61566, 1:5,000) against CLP1 and Hsp90  $\alpha$ , respectively, followed by incubating with HRP-conjugated goat anti-rabbit secondary antibody (Cat#201, 1:20,000). Images were developed using FeQ™ ECL Substrate Kit (Cat#226).