

Human AMBP Knockdown Cell Line (WB-Validated)



Catalog #: C61577

Aliases

AMBP; Alpha-1-Microglobulin/Bikunin Precursor; HCP; Protein HC; IATIL; ITILC; EDC1; HI30; ITIL; UTI; Complex-Forming Glycoprotein Heterogeneous In Charge; Inter-Alpha-Trypsin Inhibitor Light Chain; Growth-Inhibiting Protein 19; Uronic-Acid-Rich Protein; Protein AMBP; Trypstatin; Uristatin; Bikunin; ITI; A1M

Background

Gene Name: AMBP

NCBI Gene Entry: [259](#)

Storage

Store at liquid nitrogen for 1 year.

Kit Components

1. Human AMBP Knockdown Cell Line (Wb-Validated)
2. Wild-type cell line

Parental Cell Line

Human cell line supplied by the client

Validation Methods

RT-qPCR, Western blotting (WB)

Shipping

Shipped on Dry Ice.

Instructions For Use

This knockdown cell line should be paired with wild-type cell line for use.

Note: This product is for research use only.

Validation Data

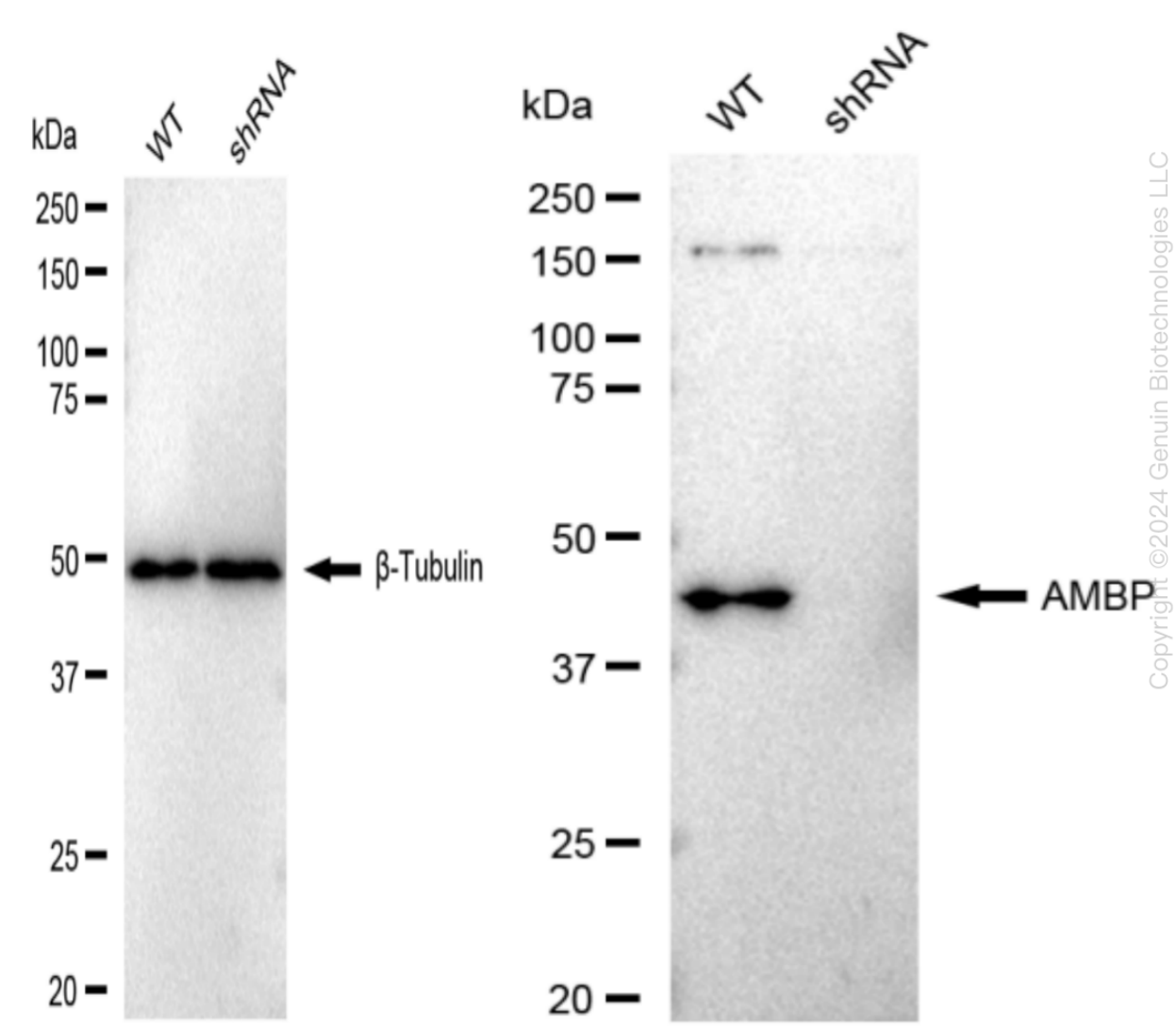
SUPPORT

SUPPORT@GENUINBIOTECH.COM
TEL: +1-540-855-7041

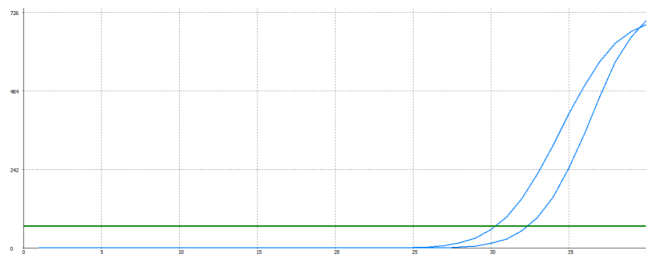
ORDERS

SALES@GENUINBIOTECH.COM
FAX: +1-540-855-7041

WWW.GENUINBIOTECH.COM



RT-qPCR analysis. HeLa cells were infected with AMBP-specific shRNA lentiviral particles, total RNA was extracted from wild-type and knockdown cells, RT-qPCR was performed using gene-specific primers. Δ Ct (Ct_{KD}-Ct_{WT}) was used to calculate mRNA reduction (%) between wild-type and knockdown cells using the following formula: $(1-1/2^{\Delta\text{Ct}}) \times 100\%$.



Genotype	Ct Value
Wild-Type	29.72
Knock-Down	31.87
Δ Ct (Ct _{KD} -Ct _{WT})	2.15
% mRNA Reduction	↓ 78%

SUPPORT

SUPPORT@GENUINBIOTECH.COM
TEL: +1-540-855-7041

ORDERS

SALES@GENUINBIOTECH.COM
FAX: +1-540-855-7041

WWW.GENUINBIOTECH.COM

Western blotting analysis. AMBP protein expression in wild-type (WT) and shRNA knockdown (KD) HeLa cells was detected using Western blotting. β -Tubulin served as a loading control. The blots were incubated with primary antibodies (Cat#61577, 1:5,000) against AMBP and β -Tubulin, respectively, followed by incubating with HRP-conjugated goat anti-rabbit secondary antibody (Cat#201, 1:20,000). Images were developed using FeQ™ ECL Substrate Kit (Cat#226).