

Human AP2M1 Knockdown Cell Line (WB-Validated)



Catalog #: C61579

Aliases

AP2M1; Adaptor Related Protein Complex 2 Subunit Mu 1; CLAPM1; AP50; Clathrin-Associated/Assembly/Adaptor Protein, Medium 1; Clathrin Assembly Protein Complex 2 Mu Medium Chain; Clathrin Assembly Protein Complex 2 Medium Chain; Adaptor Related Protein Complex 2 Mu 1 Subunit; Adaptor-Related Protein Complex 2 Subunit Mu; Plasma Membrane Adaptor AP-2 50 KDa Protein; Plasma Membrane Adaptor AP-2 50kDA Protein; Clathrin Adaptor Complex AP2, Mu Subunit; Adaptor Protein Complex AP-2 Subunit Mu; Clathrin Coat-Associated Protein AP50; Clathrin Coat Assembly Protein AP50; Clathrin Coat Adaptor Protein AP50; AP-2 Complex Subunit Mu; HA2 50 KDA Subunit; AP-2 Mu 2 Chain; Adaptin-Mu2; Mu2; HA2 50 KDa Subunit; AP-2 Mu Chain; KIAA0109; MRD60; MU2

Background

Gene Name: AP2M1
NCBI Gene Entry: [1173](#)

Storage

Store at liquid nitrogen for 1 year.

Kit Components

1. Human AP2M1 Knockdown Cell Line (Wb-Validated)
2. Wild-type cell line

Parental Cell Line

Human cell line supplied by the client

Validation Methods

RT-qPCR, Western blotting (WB)

Shipping

Shipped on Dry Ice.

Instructions For Use

This knockdown cell line should be paired with wild-type cell line for use.

Note: This product is for research use only.

SUPPORT

SUPPORT@GENUINBIOTECH.COM
TEL: +1-540-855-7041

ORDERS

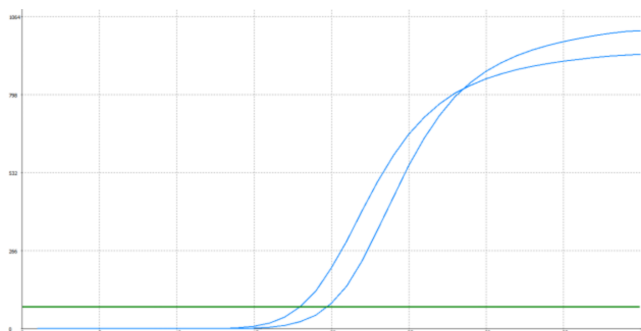
SALES@GENUINBIOTECH.COM
FAX: +1-540-855-7041

WWW.GENUINBIOTECH.COM

Human AP2M1 Knockdown Cell Line (WB-Validated)

PAGE 2

Validation Data



Genotype	Ct Value
Wild-Type	17.78
Knock-Down	19.66
$\Delta Ct (Ct_{KD} - Ct_{WT})$	1.88
% mRNA Reduction	↓ 73%

Copyright ©2024 Genuin Biotechnologies LLC

RT-qPCR analysis. HeLa cells were infected with AP2M1-specific shRNA lentiviral particles, total RNA was extracted from wild-type and knockdown cells, RT-qPCR was performed using gene-specific primers. $\Delta Ct (Ct_{KD} - Ct_{WT})$ was used to calculate mRNA reduction (%) between wild-type and knockdown cells using the following formula: $(1 - 1/2^{\Delta Ct}) \times 100\%$.

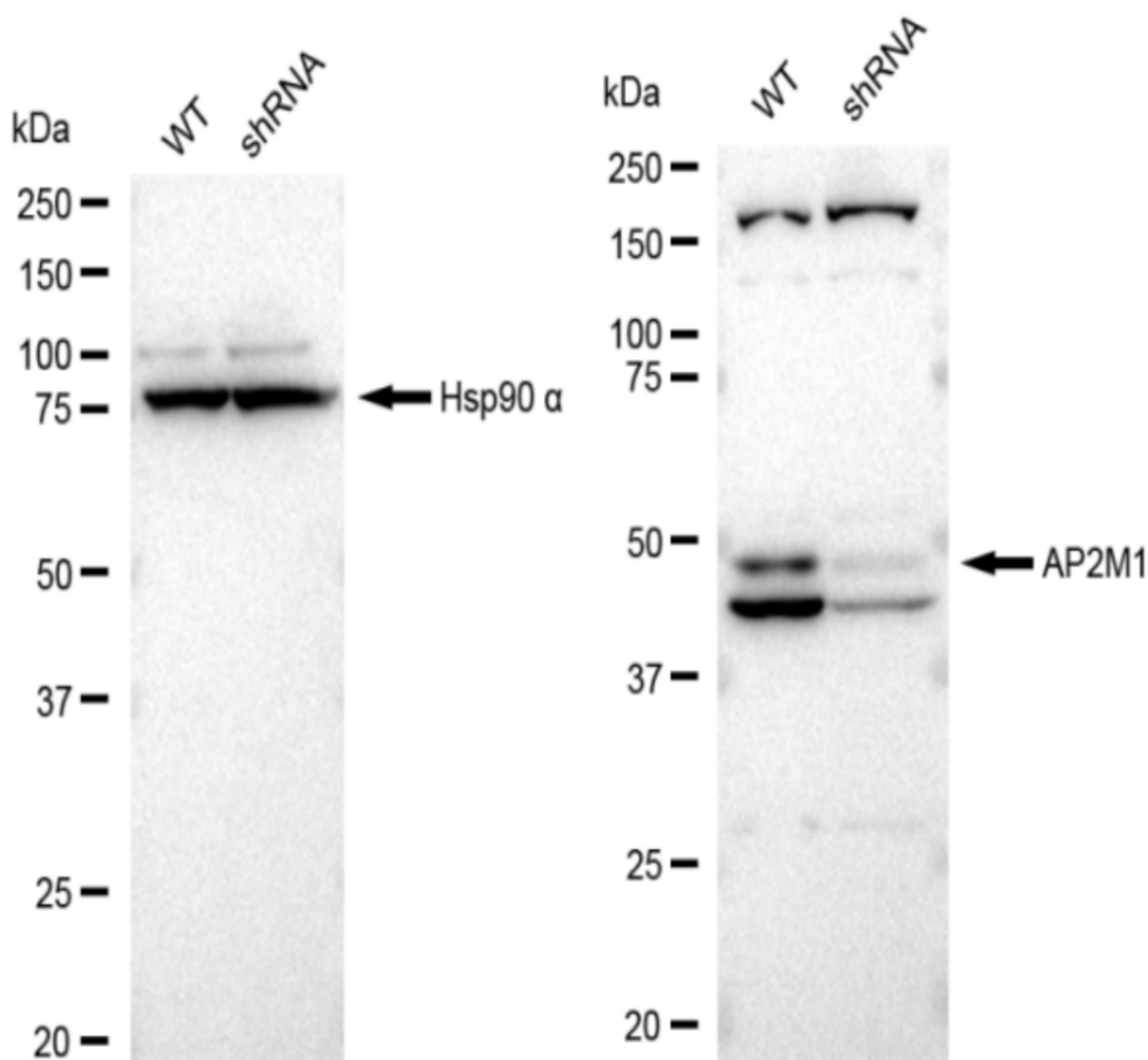
SUPPORT

SUPPORT@GENUINBIOTECH.COM
TEL: +1-540-855-7041

ORDERS

SALES@GENUINBIOTECH.COM
FAX: +1-540-855-7041

WWW.GENUINBIOTECH.COM



Western blotting analysis. AP2M1 protein expression in wild-type (WT) and shRNA knockdown (KD) HeLa cells was detected using Western blotting. Hsp90 α served as a loading control. The blots were incubated with primary antibodies (Cat#61579, 1:5,000) against AP2M1 and Hsp90 α , respectively, followed by incubating with HRP-conjugated goat anti-rabbit secondary antibody (Cat#201, 1:20,000). Images were developed using FeQ™ ECL Substrate Kit (Cat#226).

SUPPORT

SUPPORT@GENUINBIOTECH.COM
TEL: +1-540-855-7041

ORDERS

SALES@GENUINBIOTECH.COM
FAX: +1-540-855-7041

WWW.GENUINBIOTECH.COM