

Human ARID1A Knockdown Cell Line (WB-Validated)



Catalog #: C61580

Aliases

ARID1A; AT-Rich Interaction Domain 1A; BAF250; B120; SMARCF1; P270; SWI/SNF-Related, Matrix-Associated, Actin-Dependent Regulator Of Chromatin Subfamily F Member 1; AT-Rich Interactive Domain-Containing Protein 1A; AT Rich Interactive Domain 1A (SWI-Like); ARID Domain-Containing Protein 1A; SWI/SNF Complex Protein P270; BRG1-Associated Factor 250a; SWI-Like Protein; Osa Homolog 1; BAF250a; BAF250A; C1orf4; HOSA1; OSA1; HELD; SWI/SNF Related, Matrix Associated, Actin Dependent Regulator Of Chromatin, Subfamily F, Member 1; AT Rich Interactive Domain 1A (SWI- Like); Chromatin Remodeling Factor P250; BRG1-Associated Factor 250; OSA1 Nuclear Protein; Brain Protein 120; C10rf4; C10RF4; C1ORF4; BM029; MRD14; CSS2; ELD

Background

Gene Name: ARID1A
NCBI Gene Entry: [8289](#)

Storage

Store at liquid nitrogen for 1 year.

Kit Components

1. Human ARID1A Knockdown Cell Line (Wb-Validated)
2. Wild-type cell line

Parental Cell Line

Human cell line supplied by the client

Validation Methods

RT-qPCR, Western blotting (WB)

Shipping

Shipped on Dry Ice.

Instructions For Use

This knockdown cell line should be paired with wild-type cell line for use.

Note: This product is for research use only.

SUPPORT

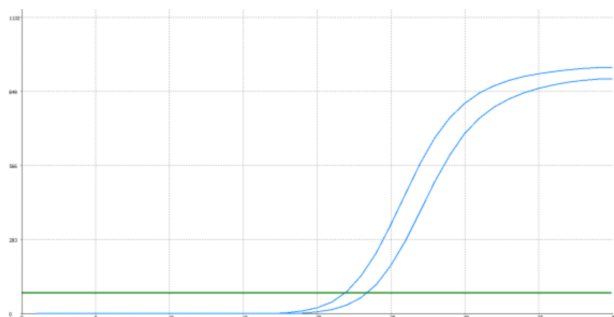
SUPPORT@GENUINBIOTECH.COM
TEL: +1-540-855-7041

ORDERS

SALES@GENUINBIOTECH.COM
FAX: +1-540-855-7041

WWW.GENUINBIOTECH.COM

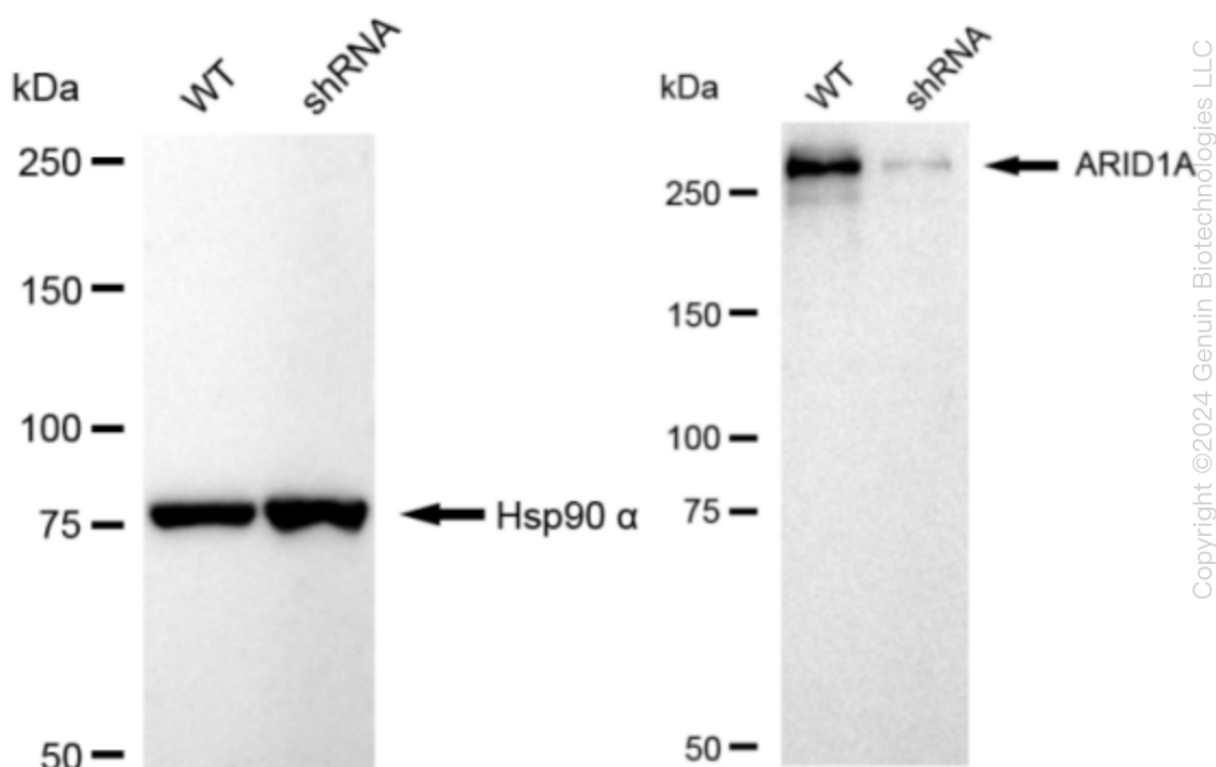
Validation Data



Genotype	Ct Value
Wild-Type	21.58
Knock-Down	23.04
ΔCt ($Ct_{KD} - Ct_{WT}$)	1.46
% mRNA Reduction	↓ 64%

Copyright ©2024 Genuin Biotechnologies LLC

RT-qPCR analysis. HeLa cells were infected with ARID1A-specific shRNA lentiviral particles, total RNA was extracted from wild-type and knockdown cells, RT-qPCR was performed using gene-specific primers. ΔCt ($Ct_{KD} - Ct_{WT}$) was used to calculate mRNA reduction (%) between wild-type and knockdown cells using the following formula: $(1 - 1/2^{\Delta Ct}) \times 100\%$.



Copyright ©2024 Genuin Biotechnologies LLC

Western blotting analysis. ARID1A protein expression in wild-type (WT) and shRNA knockdown (KD) HeLa cells was detected using Western blotting. Hsp90 α served as a loading control. The blots were incubated with primary antibodies (Cat#61580, 1:5,000) against ARID1A and Hsp90 α , respectively, followed by incubating with HRP-conjugated goat anti-rabbit secondary antibody (Cat#201, 1:20,000). Images were developed using FeQ™ ECL Substrate Kit (Cat#226).

SUPPORT

SUPPORT@GENUINBIOTECH.COM
TEL: +1-540-855-7041

ORDERS

SALES@GENUINBIOTECH.COM
FAX: +1-540-855-7041

WWW.GENUINBIOTECH.COM

