

Human CSPG4 Knockdown Cell Line (WB-Validated)



Catalog #: C61597

Aliases

CSPG4; Chondroitin Sulfate Proteoglycan 4; MCSP; Melanoma-Associated Chondroitin Sulfate Proteoglycan; MEL-CSPG; HMW-MAA; CSPG4A ; MCSPG; MSK16; NG2; Chondroitin Sulfate Proteoglycan 4 (Melanoma-Associated); Melanoma Chondroitin Sulfate Proteoglycan; Chondroitin Sulfate Proteoglycan NG2; EC 2.7.8; EC 3.6.3

Background

Gene Name: CSPG4

NCBI Gene Entry: [1464](#)

Storage

Store at liquid nitrogen for 1 year.

Kit Components

1. Human CSPG4 Knockdown Cell Line (Wb-Validated)
2. Wild-type cell line

Parental Cell Line

Human cell line supplied by the client

Validation Methods

RT-qPCR, Western blotting (WB)

Shipping

Shipped on Dry Ice.

Instructions For Use

This knockdown cell line should be paired with wild-type cell line for use.

Note: This product is for research use only.

Validation Data

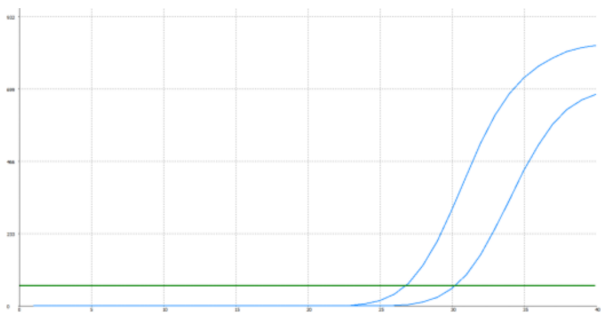
SUPPORT

SUPPORT@GENUINBIOTECH.COM
TEL: +1-540-855-7041

ORDERS

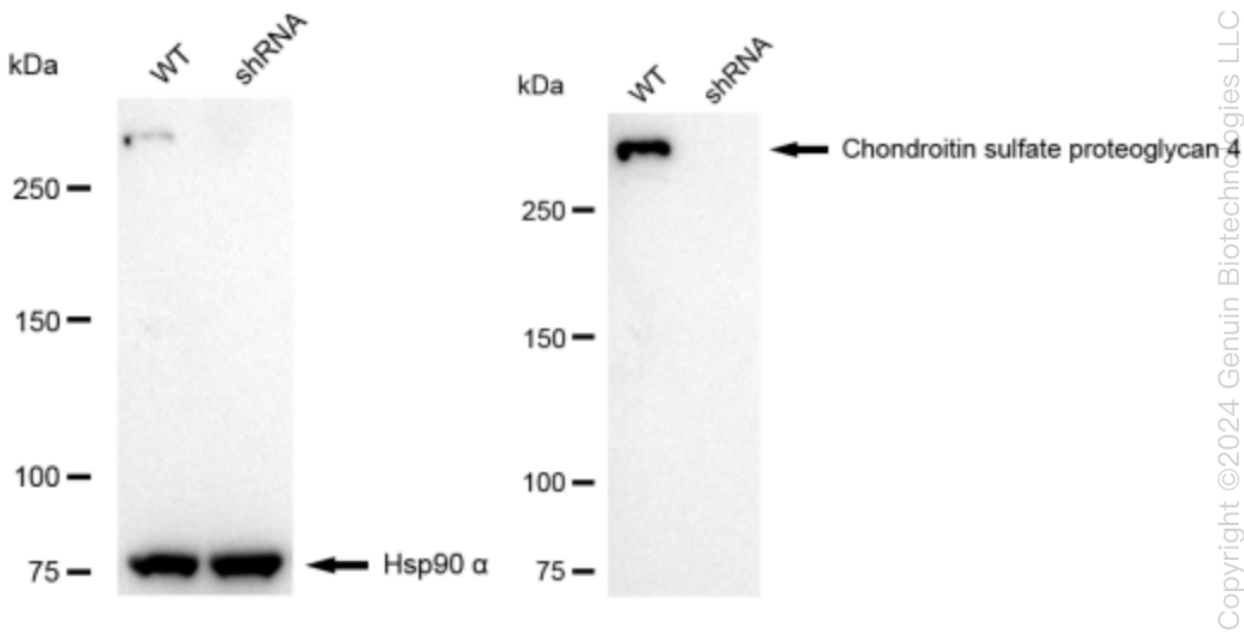
SALES@GENUINBIOTECH.COM
FAX: +1-540-855-7041

WWW.GENUINBIOTECH.COM



Genotype	Ct Value
Wild-Type	26.61
Knock-Down	29.74
$\Delta Ct (Ct_{KD}-Ct_{WT})$	3.13
% mRNA Reduction	↓ 89%

RT-qPCR analysis. HeLa cells were infected with CSPG4-specific shRNA lentiviral particles, total RNA was extracted from wild-type and knockdown cells, RT-qPCR was performed using gene-specific primers. $\Delta Ct (Ct_{KD}-Ct_{WT})$ was used to calculate mRNA reduction (%) between wild-type and knockdown cells using the following formula: $(1-1/2^{\Delta Ct}) \times 100\%$.



Western blotting analysis. CSPG4 protein expression in wild-type (WT) and shRNA knockdown (KD) HeLa cells was detected using Western blotting. Hsp90 α served as a loading control. The blots were incubated with primary antibodies (Cat#61597, 1:5,000) against CSPG4 and Hsp90 α , respectively, followed by incubating with HRP-conjugated goat anti-rabbit secondary antibody (Cat#201, 1:20,000). Images were developed using FeQ™ ECL Substrate Kit (Cat#226).