

Human CLTC Knockdown Cell Line (WB-Validated)



Catalog #: C61598

Aliases

CLTC; Clathrin Heavy Chain; CLTCL2; Hc; Clathrin Heavy Chain On Chromosome 17; Clathrin, Heavy Polypeptide-Like 2; Clathrin, Heavy Polypeptide (Hc); Clathrin Heavy Chain 1; CLH-17; Clathrin, Heavy Chain (Hc); Clathrin, Heavy Chain; KIAA0034; CHC17; MRD56; CLH17; CHC

Background

Gene Name: CLTC

NCBI Gene Entry: [1213](#)

Storage

Store at liquid nitrogen for 1 year.

Kit Components

1. Human CLTC Knockdown Cell Line (Wb-Validated)
2. Wild-type cell line

Parental Cell Line

Human cell line supplied by the client

Validation Methods

RT-qPCR, Western blotting (WB)

Shipping

Shipped on Dry Ice.

Instructions For Use

This knockdown cell line should be paired with wild-type cell line for use.

Note: This product is for research use only.

Validation Data

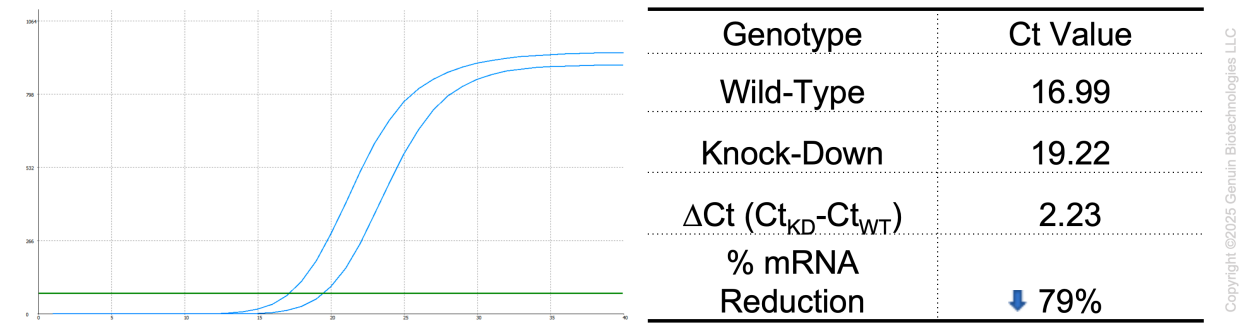
SUPPORT

SUPPORT@GENUINBIOTECH.COM
TEL: +1-540-855-7041

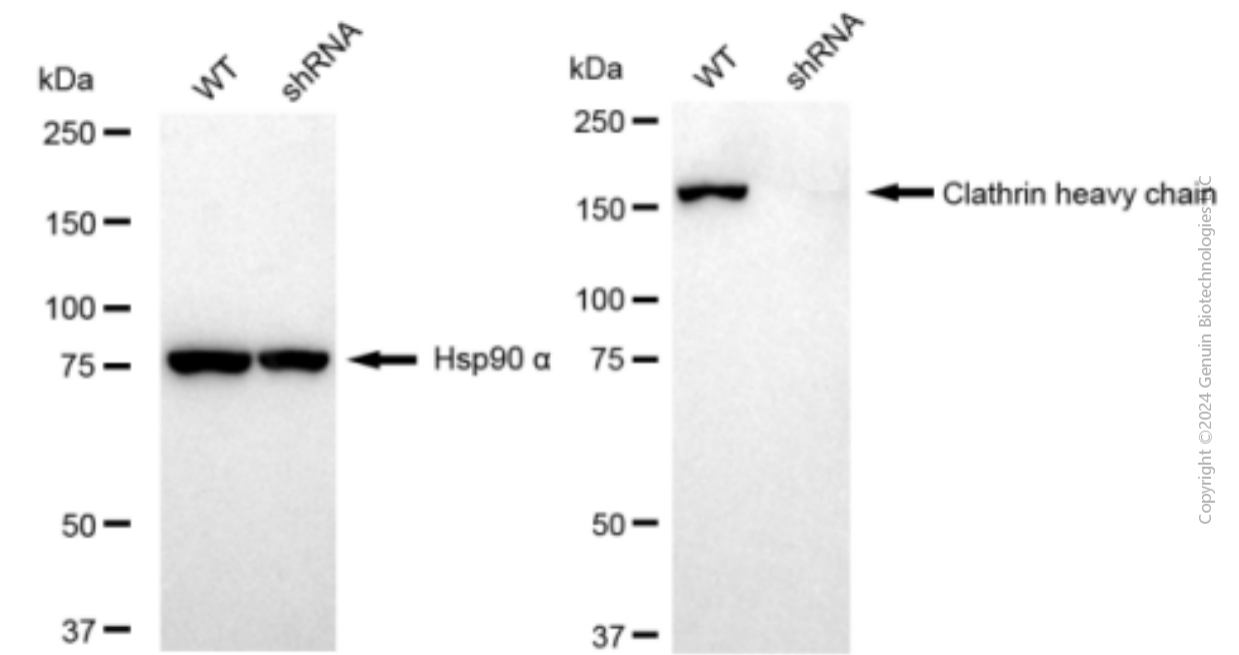
ORDERS

SALES@GENUINBIOTECH.COM
FAX: +1-540-855-7041

WWW.GENUINBIOTECH.COM



RT-qPCR analysis. HT-1080 cells were infected with CLTC-specific shRNA lentiviral particles, total RNA was extracted from wild-type and knockdown cells, RT-qPCR was performed using gene-specific primers. ΔCt (Ct_{KD}-Ct_{WT}) was used to calculate mRNA reduction (%) between wild-type and knockdown cells using the following formula: $(1-1/2^{\Delta Ct}) \times 100\%$.



Western blotting analysis. CLTC protein expression in wild-type (WT) and shRNA knockdown (KD) HT-1080 cells was detected using Western blotting. Hsp90 α served as a loading control. The blots were incubated with primary antibodies against CLTC and Hsp90 α , respectively, followed by incubating with HRP-conjugated goat anti-rabbit secondary antibody. Images were developed using FeQ™ ECL Substrate Kit.