

Human AP1G1 Knockdown Cell Line (WB-Validated)



Catalog #: C61609

Aliases

AP1G1; Adaptor Related Protein Complex 1 Subunit Gamma 1; Gamma1-Adaptin; CLAPG1; ADTG; Clathrin Assembly Protein Complex 1 Gamma-1 Large Chain; Adaptor Related Protein Complex 1 Gamma 1 Subunit; Golgi Adaptor HA1/AP1 Adaptin Subunit Gamma-1; Adaptor Protein Complex AP-1 Subunit Gamma-1; AP-1 Complex Subunit Gamma-1; Clathrin-Associated/Assembly/Adaptor Protein, Large, Gamma 1; Clathrin Assembly Protein Complex 1 Gamma Large Chain; Adaptor-Related Protein Complex 1, Gamma 1 Subunit; Adapter-Related Protein Complex 1 Subunit Gamma-1; Adaptor-Related Protein Complex 1 Subunit Gamma-1; Golgi Adaptor HA1/AP1 Adaptin Gamma Subunit; Testicular Tissue Protein Li 21; Gamma Adaptin; USRISD

Background

Gene Name: AP1G1

NCBI Gene Entry: [164](#)

Storage

Store at liquid nitrogen for 1 year.

Kit Components

1. Human AP1G1 Knockdown Cell Line (Wb-Validated)
2. Wild-type cell line

Parental Cell Line

Human cell line supplied by the client

Validation Methods

RT-qPCR, Western blotting (WB)

Shipping

Shipped on Dry Ice.

Instructions For Use

This knockdown cell line should be paired with wild-type cell line for use.

Note: This product is for research use only.

SUPPORT

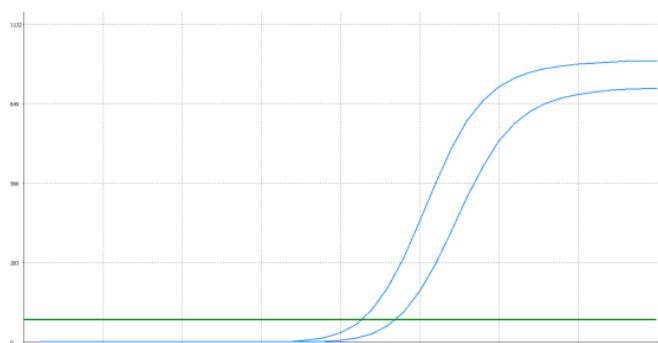
SUPPORT@GENUINBIOTECH.COM
TEL: +1-540-855-7041

ORDERS

SALES@GENUINBIOTECH.COM
FAX: +1-540-855-7041

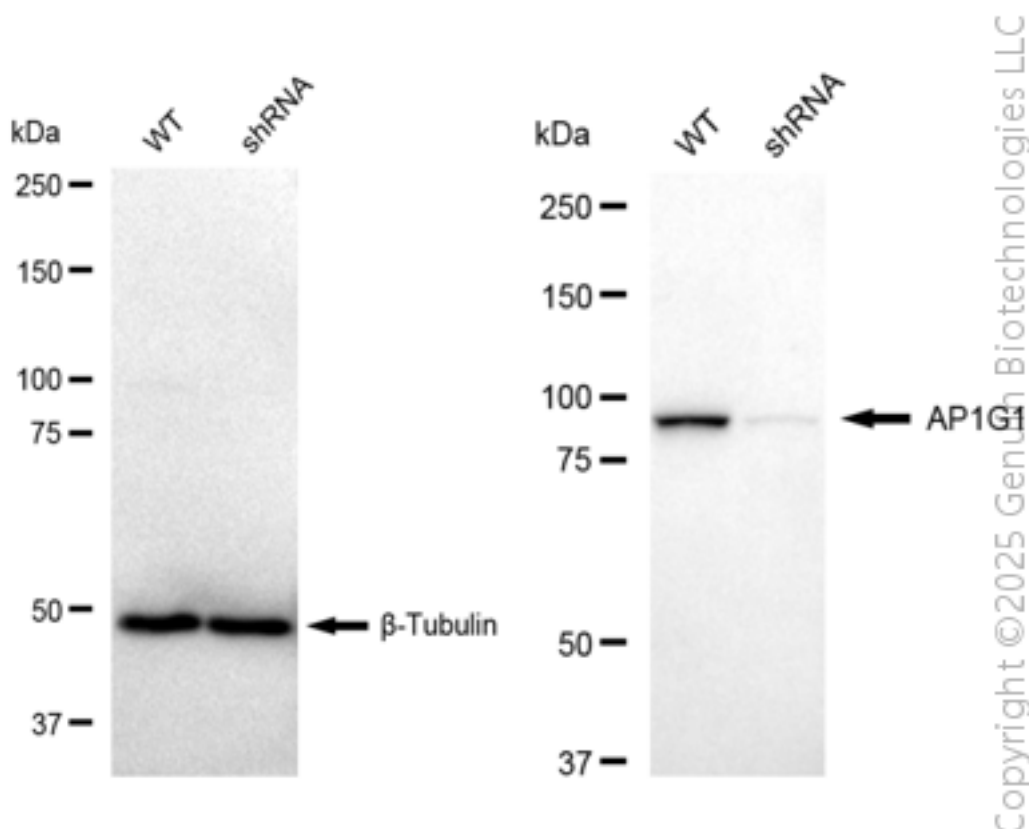
WWW.GENUINBIOTECH.COM

Validation Data



Genotype	Ct Value
Wild-Type	21.15
Knock-Down	23.12
Δ Ct (CtKD-CtWT)	1.97
% mRNA Reduction	74%

RT-qPCR analysis. HeLa cells were infected with AP1G1-specific shRNA lentiviral particles, total RNA was extracted from wild-type and knockdown cells, RT-qPCR was performed using gene-specific primers. Δ Ct (CtKD-CtWT) was used to calculate mRNA reduction (%) between wild-type and knockdown cells using the following formula: $(1 - 1/2^{\Delta\text{Ct}}) \times 100\%$.



Western blotting analysis. AP1G1 protein expression in wild-type (WT) and shRNA knockdown (KD) HeLa cells was detected using Western blotting. β -Tubulin served as a loading control. The blots were incubated with primary antibodies against AP1G1 and β -Tubulin, respectively, followed by incubating with HRP-conjugated goat anti-rabbit secondary antibody. Images were

SUPPORT

SUPPORT@GENUINBIOTECH.COM
TEL: +1-540-855-7041

ORDERS

SALES@GENUINBIOTECH.COM
FAX: +1-540-855-7041

WWW.GENUINBIOTECH.COM

Human AP1G1 Knockdown Cell Line (WB-Validated)

PAGE 3

developed using FeQ™ ECL Substrate Kit.

SUPPORT

SUPPORT@GENUINBIOTECH.COM
TEL: +1-540-855-7041

ORDERS

SALES@GENUINBIOTECH.COM
FAX:+1-540-855-7041

WWW.GENUINBIOTECH.COM