

Human C4BPB Knockdown Cell Line (WB-Validated)



Catalog #: C61617

Aliases

C4BPB; Complement Component 4 Binding Protein Beta; C4b-Binding Protein Beta Chain; C4BP; Complement Component 4 Binding Protein, Beta Chain; Complement Component 4-Binding Protein, Beta; C4b Binding Protein, Beta Chain

Background

Gene Name: C4BPB
NCBI Gene Entry: [725](#)

Storage

Store at liquid nitrogen for 1 year.

Kit Components

1. Human C4BPB Knockdown Cell Line (Wb-Validated)
2. Wild-type cell line

Parental Cell Line

Human cell line supplied by the client

Validation Methods

RT-qPCR, Western blotting (WB)

Shipping

Shipped on Dry Ice.

Instructions For Use

This knockdown cell line should be paired with wild-type cell line for use.

Note: This product is for research use only.

Validation Data

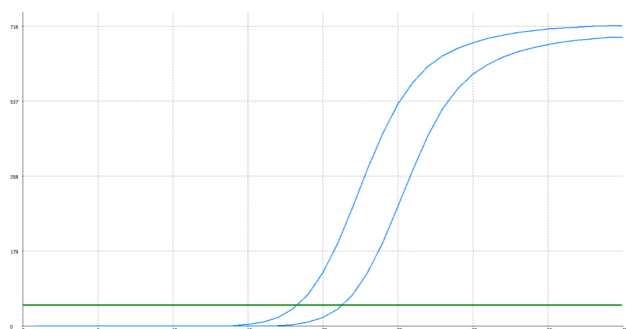
SUPPORT

SUPPORT@GENUINBIOTECH.COM
TEL: +1-540-855-7041

ORDERS

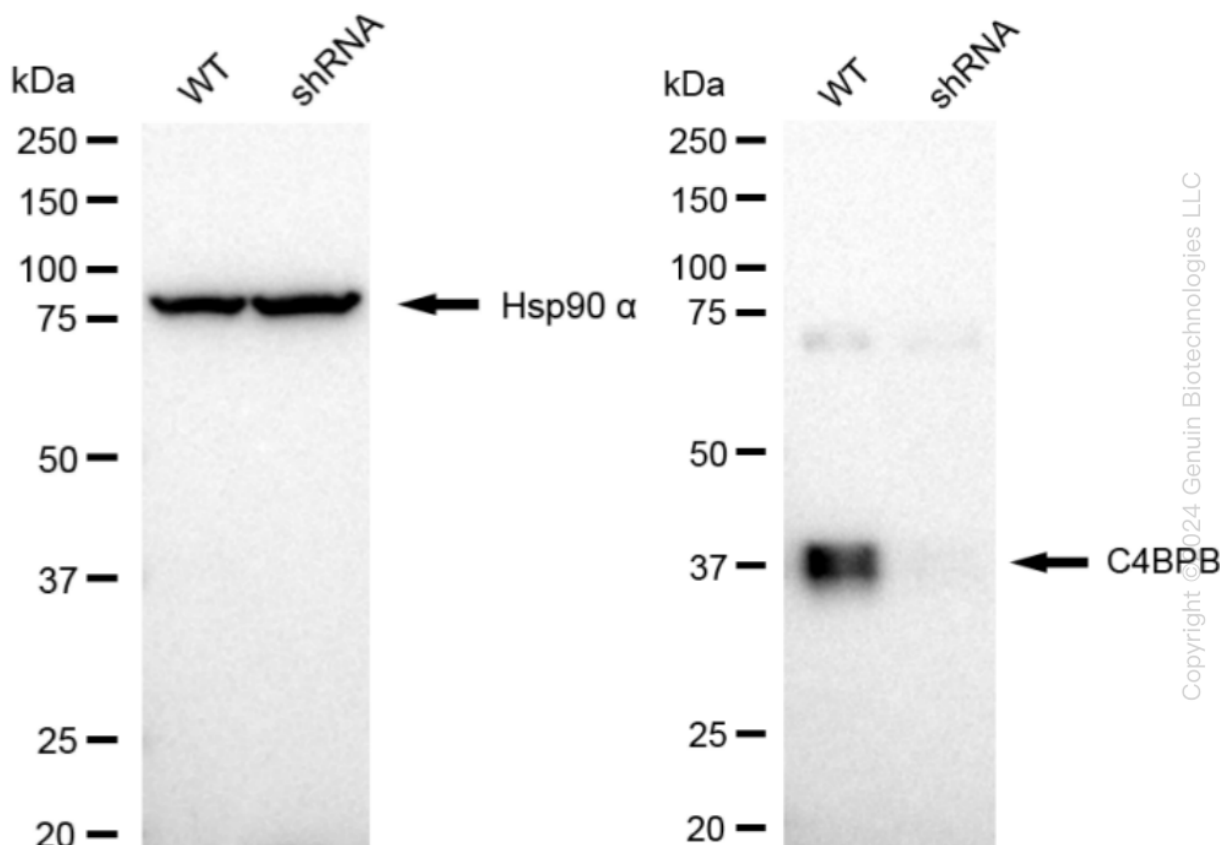
SALES@GENUINBIOTECH.COM
FAX: +1-540-855-7041

WWW.GENUINBIOTECH.COM



Genotype	Ct Value
Wild-Type	18.29
Knock-Down	21.22
$\Delta Ct (Ct_{KD} - Ct_{WT})$	2.93
% mRNA Reduction	↓ 87%

RT-qPCR analysis. HepG2 cells were infected with C4BPB-specific shRNA lentiviral particles, total RNA was extracted from wild-type and knockdown cells, RT-qPCR was performed using gene-specific primers. $\Delta Ct (Ct_{KD} - Ct_{WT})$ was used to calculate mRNA reduction (%) between wild-type and knockdown cells using the following formula: $(1 - 1/2^{\Delta Ct}) \times 100\%$.



Western blotting analysis. C4BPB protein expression in wild-type (WT) and shRNA knockdown (KD) HepG2 cells was detected using Western blotting. Hsp90 α served as a loading control. The blots were incubated with primary antibodies against C4BPB and Hsp90 α , respectively, followed by incubating with HRP-conjugated goat anti-rabbit secondary antibody. Images were developed using FeQ™ ECL Substrate Kit.