

Human EIF4A1 Knockdown Cell Line (WB-Validated)



Catalog #: C61628

Aliases

EIF4A1; Eukaryotic Translation Initiation Factor 4A1; DDX2A; EIF-4A; EIF4A; ATP-Dependent RNA Helicase EIF4A-1; Eukaryotic Initiation Factor 4A-I; EIF-4A-I; EIF4A-I; Eukaryotic Translation Initiation Factor 4A, Isoform 1; Eukaryotic Translation Initiation Factor 4A; Eukaryotic Initiation Factor 4A; EC 3.6.4.13; EC 3.6.1

Background

Gene Name: EIF4A1

NCBI Gene Entry: [1973](#)

Storage

Store at liquid nitrogen for 1 year.

Kit Components

1. Human EIF4A1 Knockdown Cell Line (Wb-Validated)
2. Wild-type cell line

Parental Cell Line

Human cell line supplied by the client

Validation Methods

RT-qPCR, Western blotting (WB)

Shipping

Shipped on Dry Ice.

Instructions For Use

This knockdown cell line should be paired with wild-type cell line for use.

Note: This product is for research use only.

Validation Data

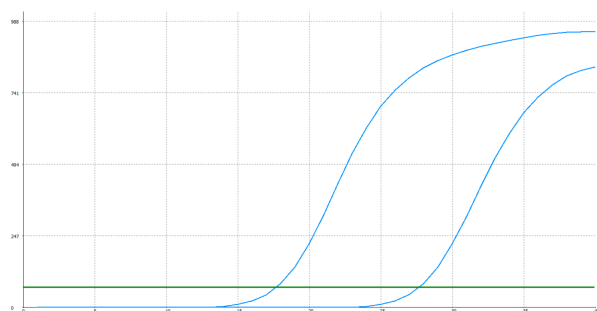
SUPPORT

SUPPORT@GENUINBIOTECH.COM
TEL: +1-540-855-7041

ORDERS

SALES@GENUINBIOTECH.COM
FAX: +1-540-855-7041

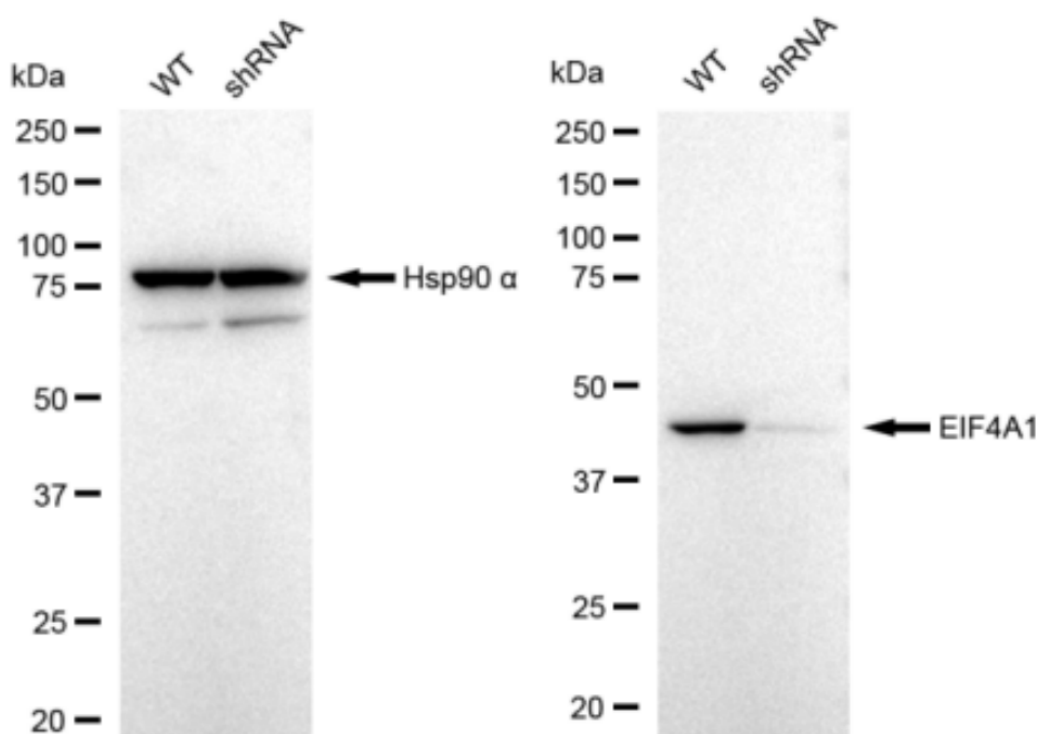
WWW.GENUINBIOTECH.COM



Genotype	Ct Value
Wild-Type	17.64
Knock-Down	27.38
$\Delta Ct (Ct_{KD} - Ct_{WT})$	9.74
% mRNA Reduction	↓ 99.9%

Copyright ©2025 Genuin Biotechnologies LLC

RT-qPCR analysis. HeLa cells were infected with EIF4A1-specific shRNA lentiviral particles, total RNA was extracted from wild-type and knockdown cells, RT-qPCR was performed using gene-specific primers. $\Delta Ct (Ct_{KD} - Ct_{WT})$ was used to calculate mRNA reduction (%) between wild-type and knockdown cells using the following formula: $(1 - 1/2^{\Delta Ct}) \times 100\%$.



Copyright ©2024 Genuin Biotechnologies LLC

Western blotting analysis. EIF4A1 protein expression in wild-type (WT) and shRNA knockdown (KD) HeLa cells was detected using Western blotting. Hsp90 α served as a loading control. The blots were incubated with primary antibodies against EIF4A1 and Hsp90 α , respectively, followed by incubating with HRP-conjugated goat anti-rabbit secondary antibody. Images were developed using FeQ™ ECL Substrate Kit.