

# Human EIF4EBP2 Knockdown Cell Line (WB-Validated)



**Catalog #: C61630**

## Aliases

EIF4EBP2; Eukaryotic Translation Initiation Factor 4E Binding Protein 2; Eukaryotic Translation Initiation Factor 4E-Binding Protein 2; EIF4E-Binding Protein 2; Phosphorylated, Heat And Acid Stable Regulated By Insulin Protein II; PHASII; 4E-BP2; 4EBP2

## Background

Gene Name: EIF4EBP2

NCBI Gene Entry: [1979](#)

## Storage

Store at liquid nitrogen for 1 year.

## Kit Components

1. Human EIF4EBP2 Knockdown Cell Line (Wb-Validated)
2. Wild-type cell line

## Parental Cell Line

Human cell line supplied by the client

## Validation Methods

RT-qPCR, Western blotting (WB)

## Shipping

Shipped on Dry Ice.

## Instructions For Use

This knockdown cell line should be paired with wild-type cell line for use.

**Note:** This product is for research use only.

## Validation Data

---

### SUPPORT

SUPPORT@GENUINBIOTECH.COM  
TEL: +1-540-855-7041

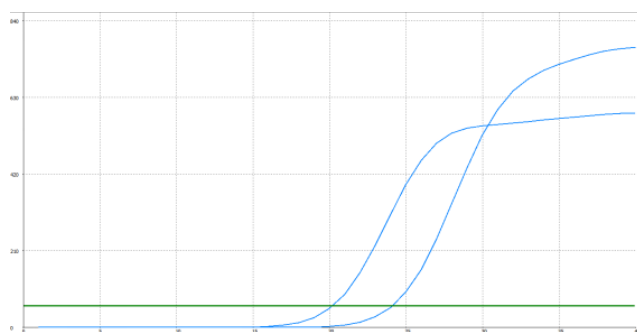
### ORDERS

SALES@GENUINBIOTECH.COM  
FAX: +1-540-855-7041

[WWW.GENUINBIOTECH.COM](http://WWW.GENUINBIOTECH.COM)

## Human EIF4EBP2 Knockdown Cell Line (WB-Validated)

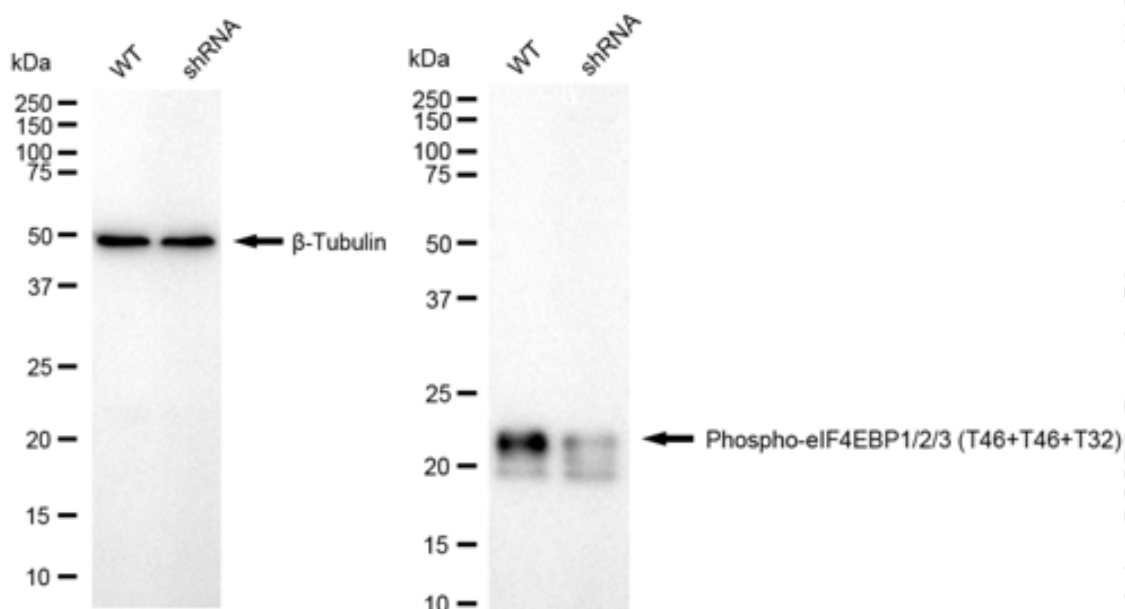
PAGE 2



Genotype	Ct Value
Wild-Type	19.59
Knock-Down	23.99
$\Delta\text{Ct (CtKD-CtWT)}$	4.40
% mRNA Reduction	95%

Copyright © 2025 Genuin Biotechnologies LLC

RT-qPCR analysis. HeLa cells were infected with EIF4EBP2-specific shRNA lentiviral particles, total RNA was extracted from wild-type and knockdown cells, RT-qPCR was performed using gene-specific primers.  $\Delta\text{Ct (CtKD-CtWT)}$  was used to calculate mRNA reduction (%) between wild-type and knockdown cells using the following formula:  $(1 - 1/2^{\Delta\text{Ct}}) \times 100\%$ .



Copyright © 2025 Genuin Biotechnologies LLC

Western blotting analysis. EIF4EBP2 protein expression in wild-type (WT) and shRNA knockdown (KD) HeLa cells was detected using Western blotting.  $\beta$ -Tubulin served as a loading control. The blots were incubated with primary antibodies against EIF4EBP2 and  $\beta$ -Tubulin, respectively, followed by incubating with HRP-conjugated goat anti-rabbit secondary antibody. Images were developed using FeQ™ ECL Substrate Kit.

### SUPPORT

SUPPORT@GENUINBIOTECH.COM  
TEL: +1-540-855-7041

### ORDERS

SALES@GENUINBIOTECH.COM  
FAX: +1-540-855-7041

[WWW.GENUINBIOTECH.COM](http://WWW.GENUINBIOTECH.COM)