

# Human BCAR1 Knockdown Cell Line (WB-Validated)



**Catalog #: C61636**

## Aliases

BCAR1; BCAR1 Scaffold Protein, Cas Family Member; CASS1; CAS; Cas Scaffolding Protein Family Member 1; CRKAS; Breast Cancer Anti-Estrogen Resistance Protein 1; BCAR1, Cas Family Scaffolding Protein; BCAR1, Cas Family Scaffold Protein; P130Cas; Breast Cancer Anti-Estrogen Resistance 1; Crk-Associated SubstRate P130Cas; Crk-Associated SubstRate; CRK-Associated SubstRate; P130CAS; P130cas; Crkas; CAS1

## Background

Gene Name: BCAR1

NCBI Gene Entry: [9564](#)

## Storage

Store at liquid nitrogen for 1 year.

## Kit Components

1. Human BCAR1 Knockdown Cell Line (Wb-Validated)
2. Wild-type cell line

## Parental Cell Line

Human cell line supplied by the client

## Validation Methods

RT-qPCR, Western blotting (WB)

## Shipping

Shipped on Dry Ice.

## Instructions For Use

This knockdown cell line should be paired with wild-type cell line for use.

**Note:** This product is for research use only.

## Validation Data

---

### SUPPORT

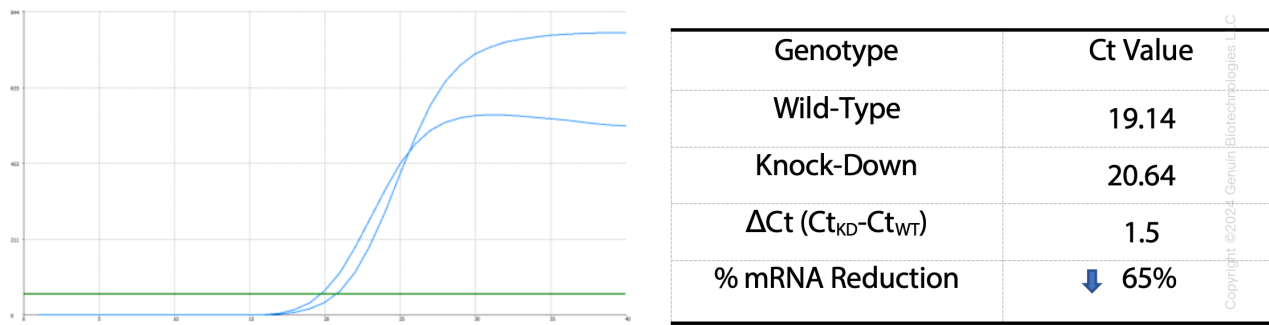
SUPPORT@GENUINBIOTECH.COM  
TEL: +1-540-855-7041

### ORDERS

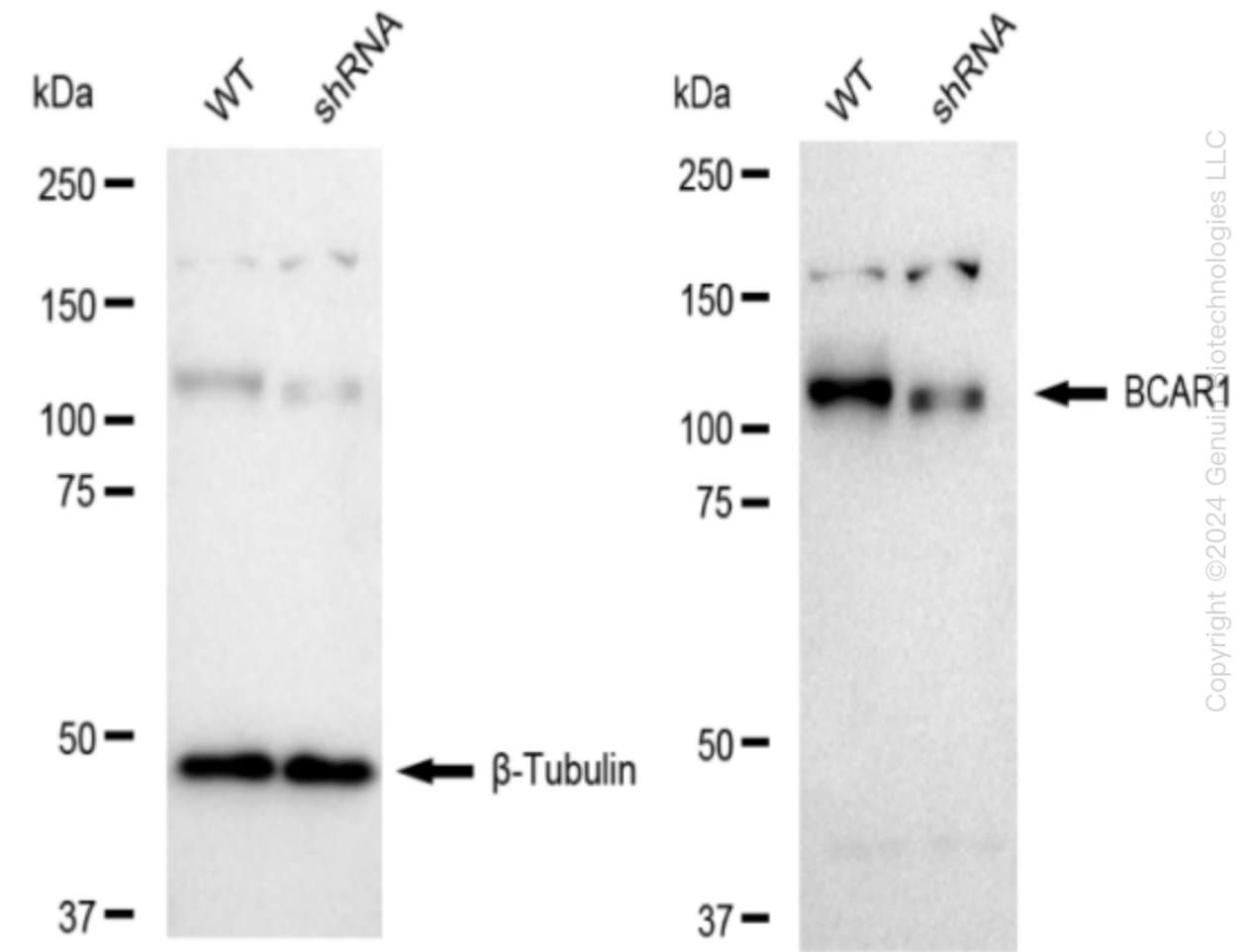
SALES@GENUINBIOTECH.COM  
FAX: +1-540-855-7041

[WWW.GENUINBIOTECH.COM](http://WWW.GENUINBIOTECH.COM)

Human BCAR1 Knockdown Cell Line (WB-Validated)



RT-qPCR analysis. HeLa cells were infected with BCAR1-specific shRNA lentiviral particles, total RNA was extracted from wild-type and knockdown cells, RT-qPCR was performed using gene-specific primers.  $\Delta Ct (Ct_{KD} - Ct_{WT})$  was used to calculate mRNA reduction (%) between wild-type and knockdown cells using the following formula:  $(1 - 1/2^{\Delta Ct}) \times 100\%$ .



Western blotting analysis. BCAR1 protein expression in wild-type (WT) and shRNA knockdown (KD) HeLa cells was detected using Western blotting.  $\beta$ -Tubulin served as a loading control. The blots were incubated with primary antibodies (Cat#61433, 1:5,000) against BCAR1 and  $\beta$ -

SUPPORT

SUPPORT@GENUINBIOTECH.COM  
TEL: +1-540-855-7041

ORDERS

SALES@GENUINBIOTECH.COM  
FAX: +1-540-855-7041

WWW.GENUINBIOTECH.COM

## **Human BCAR1 Knockdown Cell Line (WB-Validated)**

PAGE 3

Tubulin, respectively, followed by incubating with HRP-conjugated goat anti-rabbit secondary antibody (Cat#201, 1:20,000). Images were developed using FeQ™ ECL Substrate Kit (Cat#226).

---

### **SUPPORT**

SUPPORT@GENUINBIOTECH.COM  
TEL: +1-540-855-7041

### **ORDERS**

SALES@GENUINBIOTECH.COM  
FAX: +1-540-855-7041

**WWW.GENUINBIOTECH.COM**