

# Human RASA1 Knockdown Cell Line (WB-Validated)



**Catalog #: C61697**

## Aliases

RASA1; RAS P21 Protein Activator 1; P120GAP; GAP; Ras GTPase-Activating Protein 1; P120RASGAP; CM-AVM; P120; RASA; RAS P21 Protein Activator (GTPase Activating Protein) 1; P120 RAS GTPase Activating Protein; Capillary Malformation-Arteriovenous Malformation; Triphosphatase-Activating Protein; GTPase-Activating Protein; Ras P21 Protein Activator; CMAVM1; RASGAP; RasGAP; CMAVM; PKWS

## Background

Gene Name: RASA1  
NCBI Gene Entry: [5921](#)

## Storage

Store at liquid nitrogen for 1 year.

## Kit Components

1. Human RASA1 Knockdown Cell Line (Wb-Validated)
2. Wild-type cell line

## Parental Cell Line

Human cell line supplied by the client

## Validation Methods

RT-qPCR, Western blotting (WB)

## Shipping

Shipped on Dry Ice.

## Instructions For Use

This knockdown cell line should be paired with wild-type cell line for use.

**Note:** This product is for research use only.

## Validation Data

---

### SUPPORT

SUPPORT@GENUINBIOTECH.COM  
TEL: +1-540-855-7041

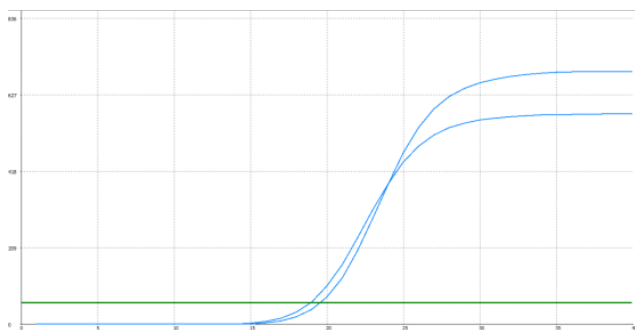
### ORDERS

SALES@GENUINBIOTECH.COM  
FAX: +1-540-855-7041

[WWW.GENUINBIOTECH.COM](http://WWW.GENUINBIOTECH.COM)

## Human RASA1 Knockdown Cell Line (WB-Validated)

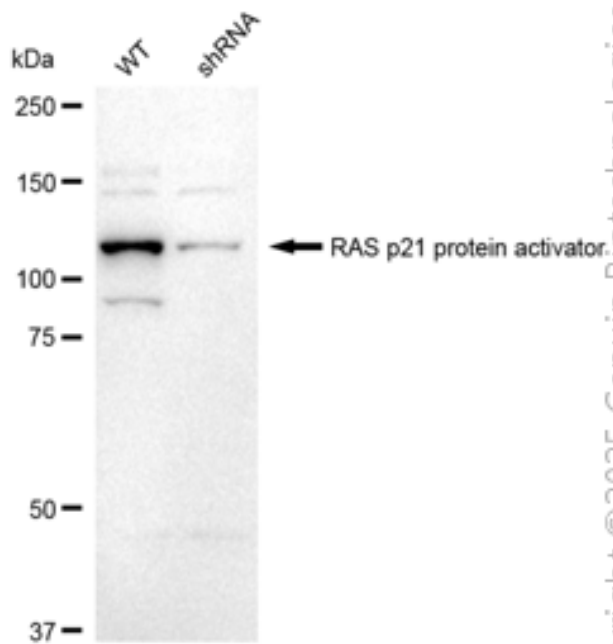
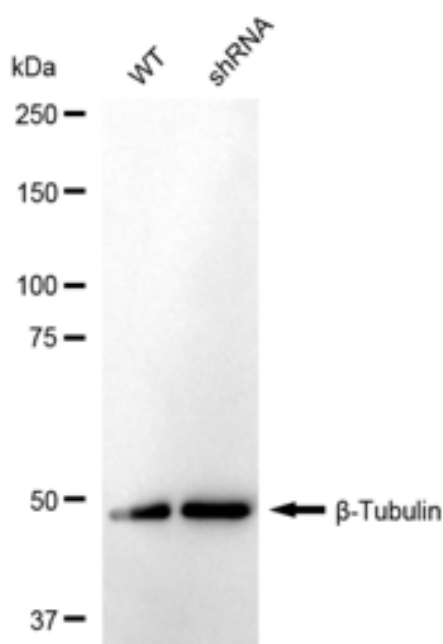
PAGE 2



Genotype	Ct Value
Wild-Type	18.28
Knock-Down	19.26
$\Delta$ Ct (CtKD-CtWT)	0.98
% mRNA Reduction	49%

Copyright © 2025 Genuin Biotechnologies LLC

RT-qPCR analysis. HT-1080 cells were infected with RASA1-specific shRNA lentiviral particles, total RNA was extracted from wild-type and knockdown cells, RT-qPCR was performed using gene-specific primers.  $\Delta$ Ct (CtKD-CtWT) was used to calculate mRNA reduction (%) between wild-type and knockdown cells using the following formula:  $(1 - 1/2^{\Delta\text{Ct}}) \times 100\%$ .



Copyright © 2025 Genuin Biotechnologies LLC

Western blotting analysis. RASA1 protein expression in wild-type (WT) and shRNA knockdown (KD) HT-1080 cells was detected using Western blotting.  $\beta$ -Tubulin served as a loading control. The blots were incubated with primary antibodies against RASA1 and  $\beta$ -Tubulin, respectively, followed by incubating with HRP-conjugated goat anti-rabbit secondary antibody. Images were developed using FeQ™ ECL Substrate Kit.

### SUPPORT

SUPPORT@GENUINBIOTECH.COM  
TEL: +1-540-855-7041

### ORDERS

SALES@GENUINBIOTECH.COM  
FAX: +1-540-855-7041

[WWW.GENUINBIOTECH.COM](http://WWW.GENUINBIOTECH.COM)

