

Human SMARCC1 Knockdown Cell Line (WB-Validated)



Catalog #: C61706

Aliases

SMARCC1; SWI/SNF Related, Matrix Associated, Actin Dependent Regulator Of Chromatin Subfamily C Member 1; BAF155; CRACC1; SRG3; SWI/SNF-Related Matrix-Associated Actin-Dependent Regulator Of Chromatin Subfamily C Member 1; SWI/SNF Complex Subunit SMARCC1; SWI/SNF Complex 155 KDa Subunit; BRG1-Associated Factor 155; Rsc8; SWI/SNF Related, Matrix Associated, Actin Dependent Regulator Of; Chromatin, Subfamily C, Member 1; Mammalian Chromatin Remodeling Complex BRG1-Associated Factor 155; Chromatin Remodeling Complex BAF155 Subunit; HYC5; SWI3; RSC8

Background

Gene Name: SMARCC1
NCBI Gene Entry: [6599](#)

Storage

Store at liquid nitrogen for 1 year.

Kit Components

1. Human SMARCC1 Knockdown Cell Line (Wb-Validated)
2. Wild-type cell line

Parental Cell Line

Human cell line supplied by the client

Validation Methods

RT-qPCR, Western blotting (WB)

Shipping

Shipped on Dry Ice.

Instructions For Use

This knockdown cell line should be paired with wild-type cell line for use.

Note: This product is for research use only.

Validation Data

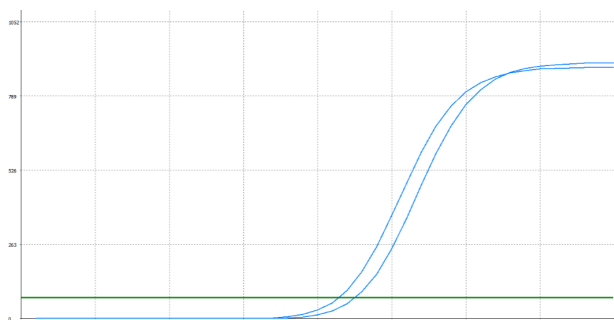
SUPPORT

SUPPORT@GENUINBIOTECH.COM
TEL: +1-540-855-7041

ORDERS

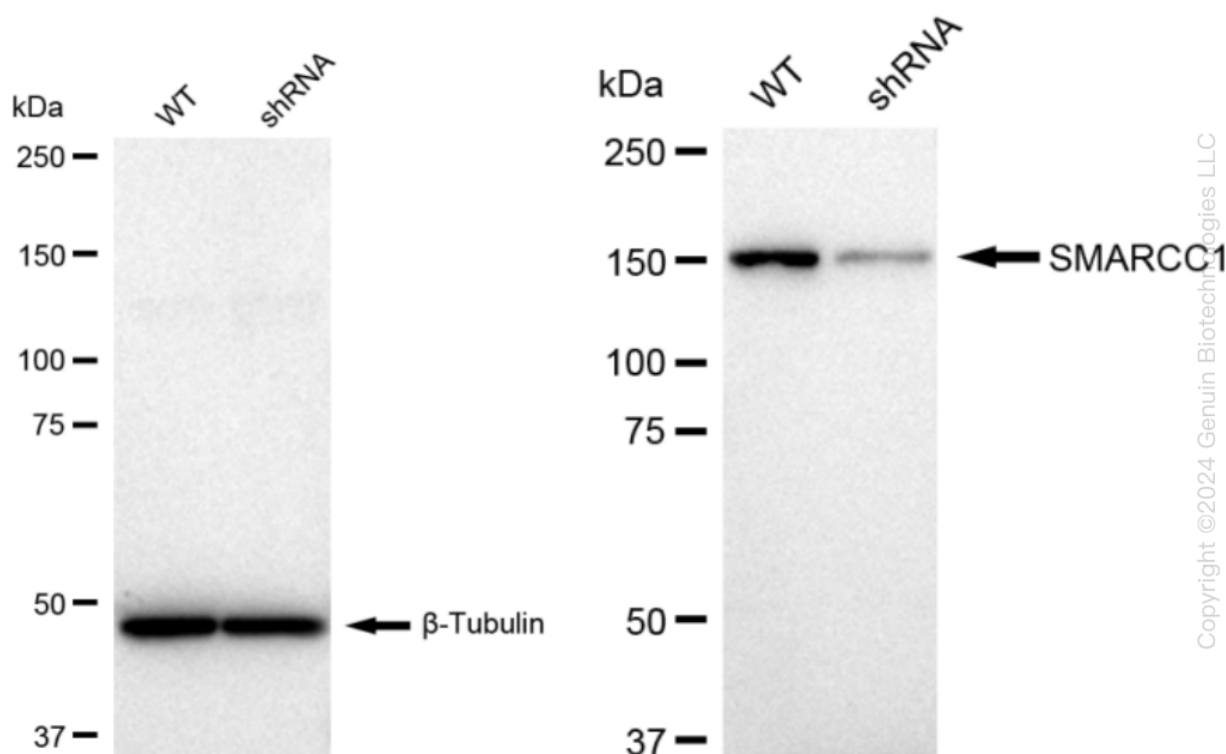
SALES@GENUINBIOTECH.COM
FAX: +1-540-855-7041

WWW.GENUINBIOTECH.COM



Genotype	Ct Value
Wild-Type	21.16
Knock-Down	22.29
$\Delta Ct (Ct_{KD} - Ct_{WT})$	1.13
% mRNA Reduction	↓ 54%

RT-qPCR analysis. HeLa cells were infected with SMARCC1-specific shRNA lentiviral particles, total RNA was extracted from wild-type and knockdown cells, RT-qPCR was performed using gene-specific primers. $\Delta Ct (Ct_{KD} - Ct_{WT})$ was used to calculate mRNA reduction (%) between wild-type and knockdown cells using the following formula: $(1 - 1/2^{\Delta Ct}) \times 100\%$.



Western blotting analysis. SMARCC1 protein expression in wild-type (WT) and shRNA knockdown (KD) HeLa cells was detected using Western blotting. β -Tubulin served as a loading control. The blots were incubated with primary antibodies against SMARCC1 and β -Tubulin, respectively, followed by incubating with HRP-conjugated goat anti-rabbit secondary antibody. Images were developed using FeQ™ ECL Substrate Kit.