

Human SORT1 Knockdown Cell Line (WB-Validated)



Catalog #: C61707

Aliases

SORT1; Sortilin 1; NT3; Gp95; Neurotensin Receptor 3; 100 KDa NT Receptor; Glycoprotein 95; Sortilin; NTR3; LDLCQ6; GP95

Background

Gene Name: SORT1

NCBI Gene Entry: [6272](#)

Storage

Store at liquid nitrogen for 1 year.

Kit Components

1. Human SORT1 Knockdown Cell Line (Wb-Validated)
2. Wild-type cell line

Parental Cell Line

Human cell line supplied by the client

Validation Methods

RT-qPCR, Western blotting (WB)

Shipping

Shipped on Dry Ice.

Instructions For Use

This knockdown cell line should be paired with wild-type cell line for use.

Note: This product is for research use only.

Validation Data

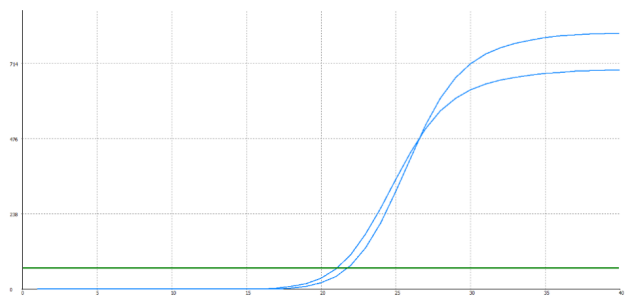
SUPPORT

SUPPORT@GENUINBIOTECH.COM
TEL: +1-540-855-7041

ORDERS

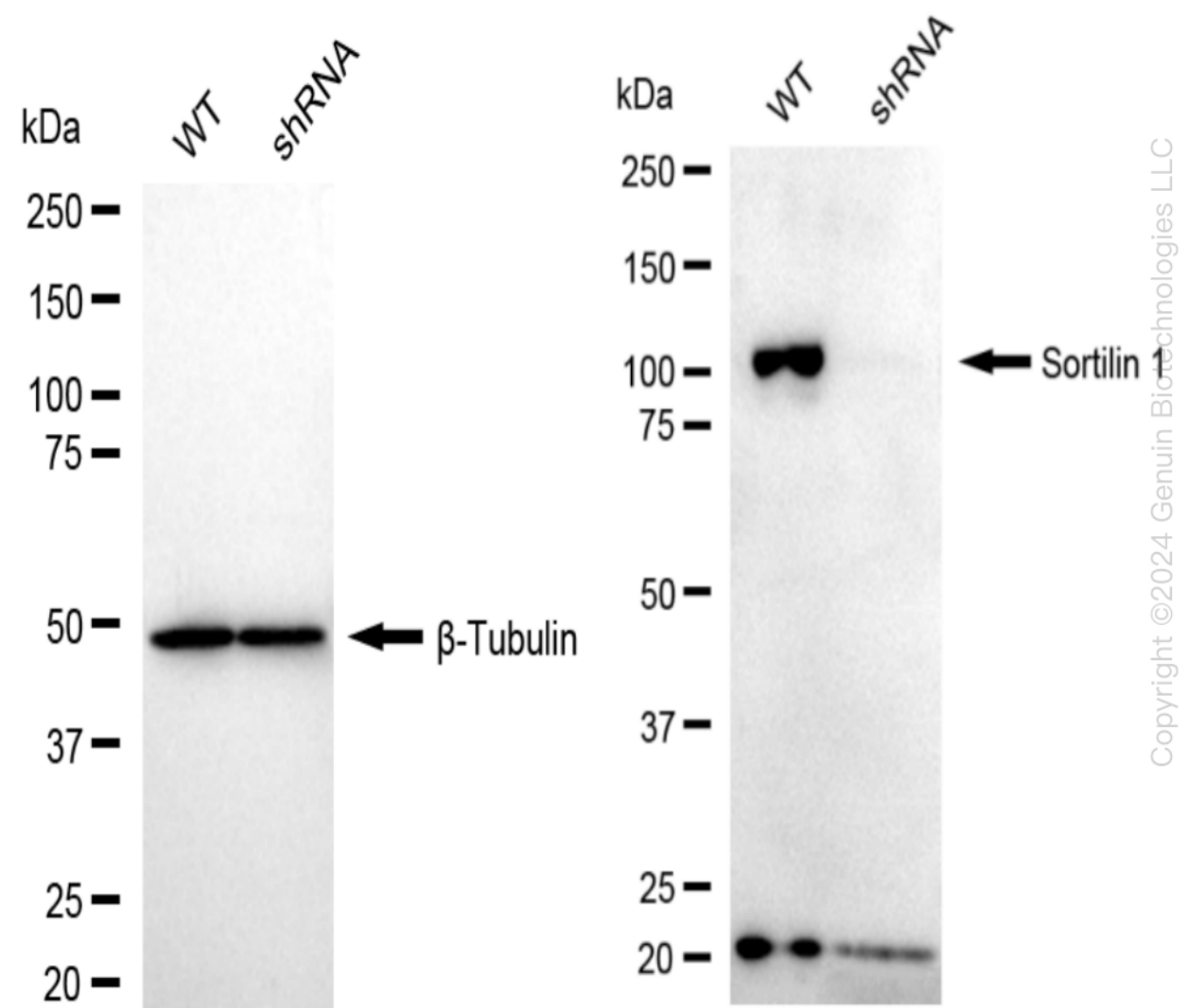
SALES@GENUINBIOTECH.COM
FAX: +1-540-855-7041

WWW.GENUINBIOTECH.COM



Genotype	Ct Value
Wild-Type	20.5
Knock-Down	21.49
ΔCt (Ct _{KD} -Ct _{WT})	0.99
% mRNA Reduction	↓ 50%

RT-qPCR analysis. HT-1080 cells were infected with SORT1-specific shRNA lentiviral particles, total RNA was extracted from wild-type and knockdown cells, RT-qPCR was performed using gene-specific primers. ΔCt (Ct_{KD}-Ct_{WT}) was used to calculate mRNA reduction (%) between wild-type and knockdown cells using the following formula: $(1-1/2^{\Delta Ct}) \times 100\%$.



Western blotting analysis. SORT1 protein expression in wild-type (WT) and shRNA knockdown

(KD) HT-1080 cells was detected using Western blotting. β -Tubulin served as a loading control. The blots were incubated with primary antibodies (Cat#61707, 1:5,000) against SORT1 and β -Tubulin, respectively, followed by incubating with HRP-conjugated goat anti-rabbit secondary antibody (Cat#201, 1:20,000). Images were developed using FeQ™ ECL Substrate Kit (Cat#226).